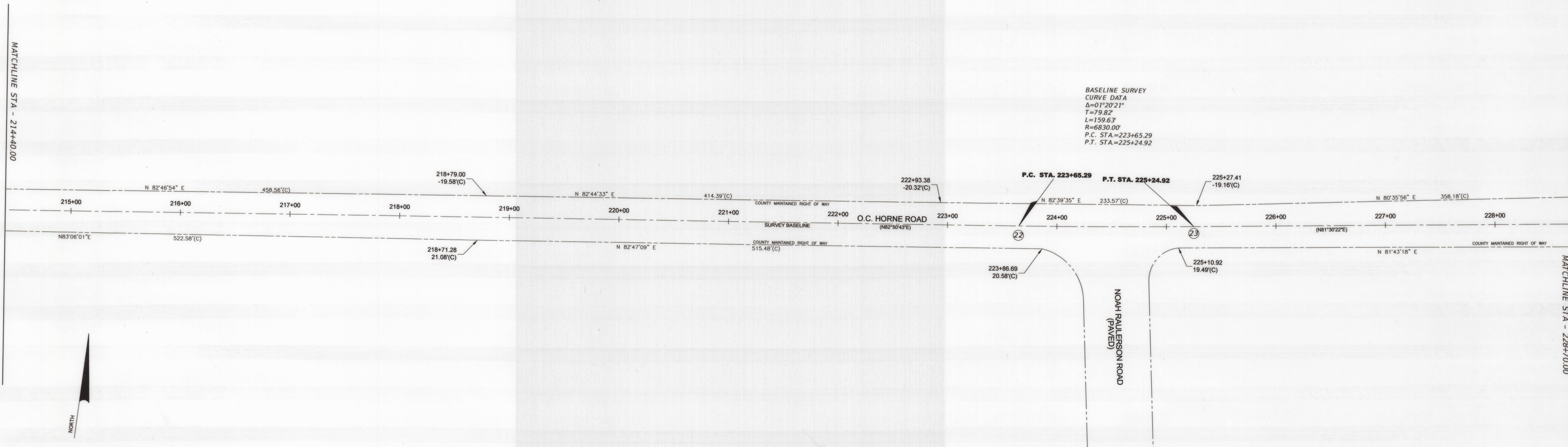
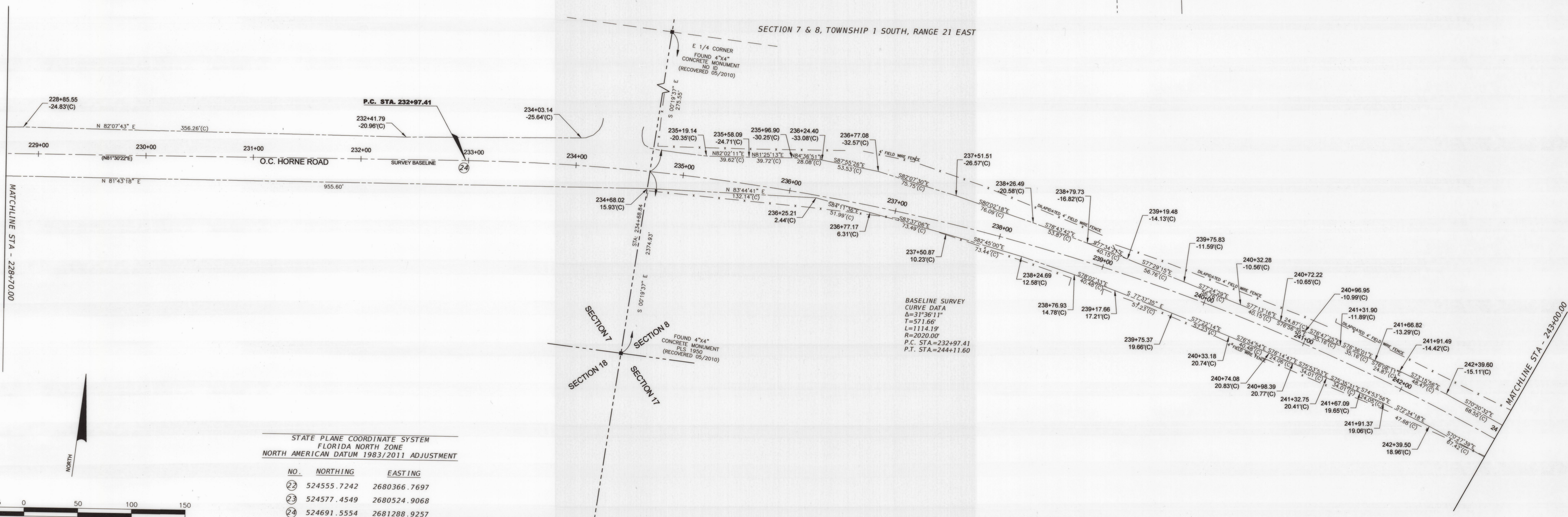


SECTION 7 & 8, TOWNSHIP 1 SOUTH, RANGE 21 EAST



BASELINE SURVEY
 CURVE DATA
 $\Delta=01^{\circ}20'21''$
 $T=79.82$
 $L=159.63$
 $R=6830.00'$
 P.C. STA.=223+65.29
 P.T. STA.=225+24.92

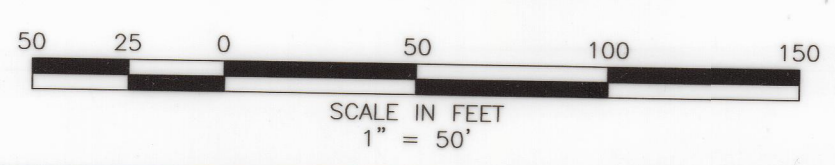
SECTION 7 & 8, TOWNSHIP 1 SOUTH, RANGE 21 EAST



BASELINE SURVEY
 CURVE DATA
 $\Delta=31^{\circ}36'11''$
 $T=571.66$
 $L=1114.19$
 $R=2020.00'$
 P.C. STA.=232+97.41
 P.T. STA.=244+11.60

STATE PLANE COORDINATE SYSTEM
 FLORIDA NORTH ZONE
 NORTH AMERICAN DATUM 1983/2011 ADJUSTMENT

NO.	NORTHING	EASTING
22	524555.7242	2680366.7697
23	524577.4549	2680524.9068
24	524691.5554	2681288.9257



BAKER COUNTY

REVISIONS				L. D. BRADLEY LAND SURVEYORS 510 S. 5TH STREET MACLENNY, FL 32063 LB 6888		STATE OF FLORIDA DEPARTMENT OF TRANSPORTATION			SHEET TITLE: MAINTENANCE MAP		REF. DWG. NO.
DATE	BY	DESCRIPTION	DATE	BY	DESCRIPTION	ROAD NO.	COUNTY	FINANCIAL PROJECT ID	PROJECT NAME: OC HORNE ROAD		SHEET NO.
						OC HORNE	BAKER				7 OF 8