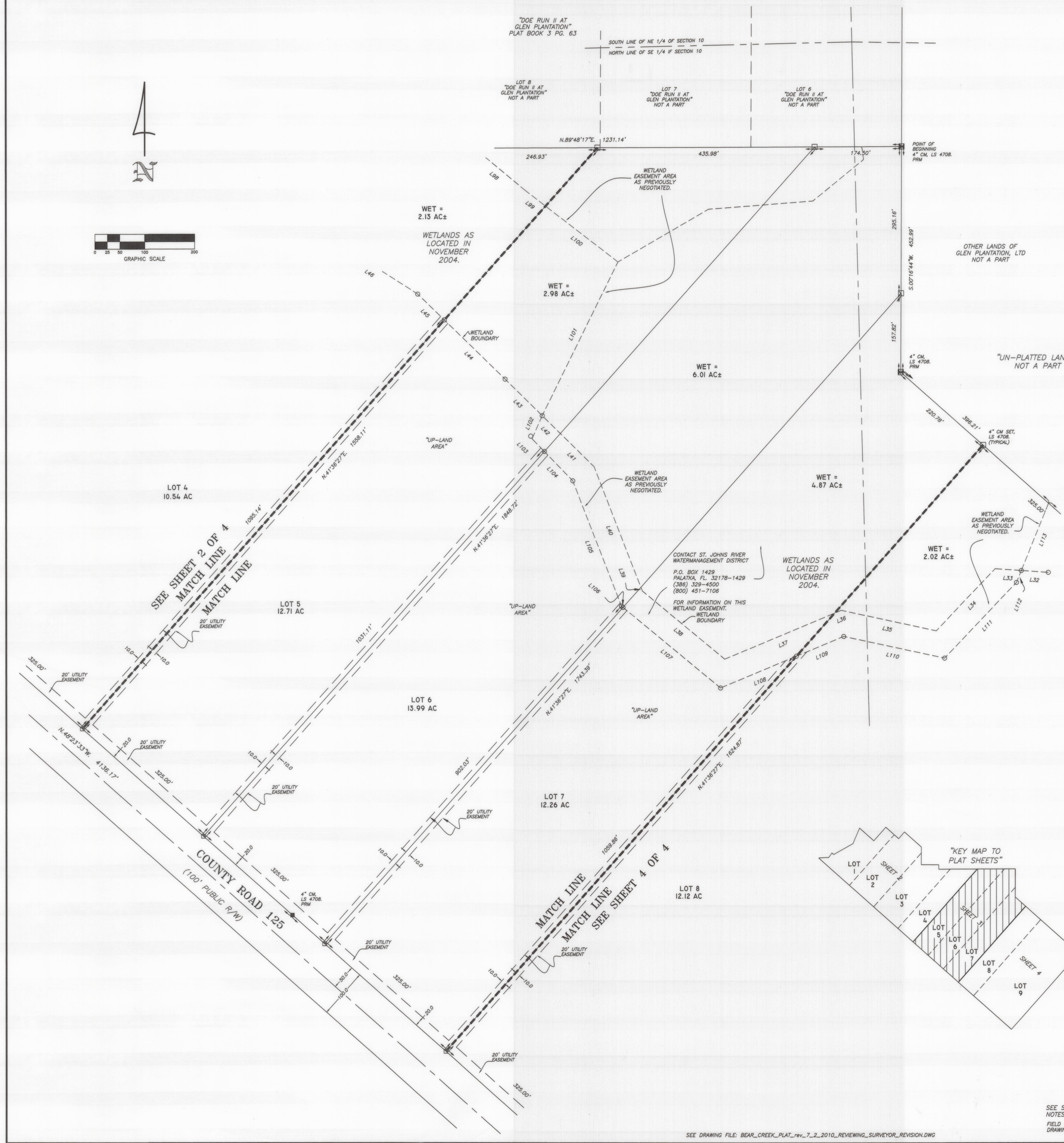
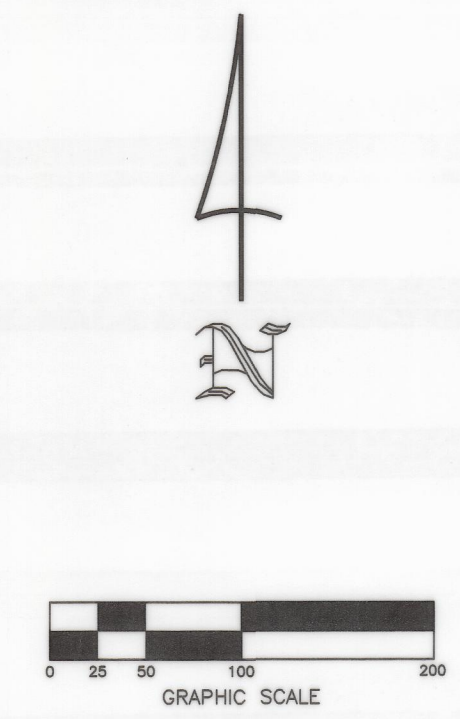


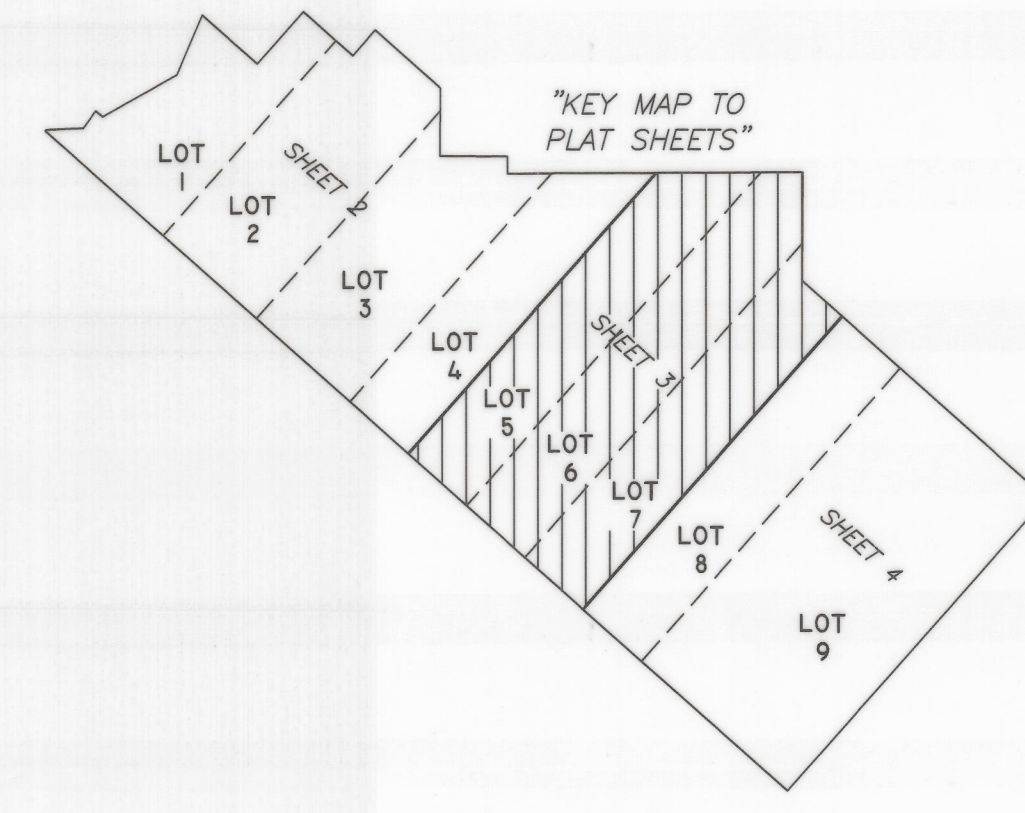
"BEAR CREEK"
A SUBDIVISION OF A PART OF
SECTIONS 10, 11 AND 15,
TOWNSHIP 1 SOUTH, RANGE 21 EAST,
BAKER COUNTY, FLORIDA



LINE TABLE			LINE TABLE		
Line	Bearing	Distance	Line	Bearing	Distance
L1	N.20°10'42"E	19.50'	L48	N.57°30'29"W	163.26'
L2	N.20°10'44"E	70.24'	L49	S.75°32'13"W	106.94'
L3	N.03°11'17"W	126.00'	L50	S.28°18'33"W	169.04'
L4	N.16°49'09"W	138.73'	L51	S.08°32'21"W	149.18'
L5	N.03°27'58"W	124.21'	L52	S.43°20'27"W	142.92'
L6	N.31°19'51"E	86.04'	L53	S.69°07'31"W	144.86'
L7	S.69°22'22"E	54.63'	L54	S.87°59'13"W	182.38'
L8	S.20°19'54"E	67.84'	L55	S.47°09'08"W	116.44'
L9	S.34°42'20"E	186.52'	L56	S.55°49'11"W	117.65'
L10	S.43°02'59"E	142.50'	L57	S.55°49'09"W	29.37'
L11	N.37°52'47"E	67.96'	L58	N.67°29'22"E	25.78'
L12	S.71°49'35"E	133.38'	L59	N.67°29'24"E	64.17'
L13	N.67°15'04"E	116.28'	L60	N.28°34'28"E	101.24'
L14	N.02°11'59"W	159.16'	L61	N.25°13'02"E	115.08'
L15	N.10°05'16"E	127.22'	L62	N.52°53'14"E	118.85'
L16	N.24°25'44"W	180.08'	L63	N.48°32'54"E	119.54'
L17	N.33°47'09"E	117.73'	L64	N.37°59'42"E	91.62'
L18	S.44°32'32"E	134.87'	L65	N.37°19'44"E	71.22'
L19	S.68°31'16"E	104.36'	L66	N.33°00'07"W	122.63'
L20	S.06°15'37"W	92.37'	L67	N.04°31'35"E	117.91'
L21	S.47°34'32"E	178.59'	L68	S.71°21'07"W	129.53'
L22	N.22°27'02"E	74.79'	L69	N.71°54'57"W	64.53'
L23	N.29°05'57"W	118.66'	L70	N.71°54'56"W	76.30'
L24	N.40°04'10"E	133.01'	L71	N.47°24'22"W	141.13'
L25	N.51°41'24"E	202.31'	L72	N.81°55'36"W	115.55'
L26	N.29°23'18"E	151.14'	L73	N.89°03'58"W	131.49'
L27	N.21°19'43"W	96.54'	L74	S.25°32'09"W	71.96'
L28	N.60°16'24"W	165.29'	L75	S.60°19'50"W	107.33'
L29	N.53°28'35"W	232.96'	L76	S.75°18'31"W	95.34'
L30	N.49°11'17"W	149.88'	L77	S.72°49'51"W	57.21'
L31	N.49°51'17"W	58.08'	L78	S.61°38'21"W	139.31'
L32	N.80°11'10"W	54.33'	L79	N.74°40'32"W	92.77'
L33	N.86°01'09"W	32.62'	L80	S.52°15'21"E	52.83'
L34	S.43°34'33"W	171.47'	L81	S.52°15'21"E	183.51'
L35	N.77°47'55"W	195.02'	L82	S.26°15'51"W	343.95'
L36	S.67°20'45"W	14.90'	L83	S.23°44'55"W	50.78'
L37	S.67°20'45"W	238.55'	L84	S.44°11'07"E	35.41'
L38	N.50°28'17"W	214.25'	L85	S.44°11'07"E	81.53'
L39	N.21°11'06"W	8.21'	L86	S.21°11'09"E	269.58'
L40	N.21°11'06"W	259.01'	L87	S.50°28'37"E	3.94'
L41	N.45°25'23"W	94.77'	L88	S.50°28'37"E	253.52'
L42	N.45°25'23"W	50.98'	L89	N.66°08'49"E	155.66'
L43	N.45°25'23"W	104.42'	L90	N.66°17'01"E	112.26'
L44	N.45°48'09"W	170.00'	L91	S.77°47'56"E	207.39'
L45	N.45°48'09"W	74.27'	L92	N.43°34'33"E	208.00'
L46	N.57°12'30"W	208.79'	L93	N.22°08'34"E	25.86'
L47	N.57°30'29"W	45.05'	L94	N.22°08'34"E	145.52'

EASEMENTS OF TWENTY (20) AND TEN (10) FEET IN WIDTH AS SHOWN HEREON ARE HEREBY CREATED AND PROVIDED FOR THE PURPOSE OF ACCOMMODATING OVERHEAD, SURFACE AND UNDERGROUND UTILITIES AND DRAINAGE. WHERE AN AREA GREATER THAN ONE LOT IS USED AS A BUILDING SITE, ONLY THE OUTSIDE BOUNDARY OF SAID SITE SHALL BE SUBJECT TO THE LOT LINE EASEMENT.

"ENVIRONMENTALLY SENSITIVE AREAS" AND "AREAS OF RESTRICTED DEVELOPMENT" KNOWN TO THE DEVELOPER ARE SHOWN HEREON AS CONSERVATION EASEMENTS AND WETLANDS. DEVELOPMENT WITHIN THE WETLAND AREAS IS SUBJECT TO COUNTY AND STATE REGULATIONS AND SHOULD NOT BE UNDERTAKEN WITHOUT APPROVAL FROM THE REGULATING AUTHORITIES.



- SYMBOL LEGEND**
- CONCRETE MONUMENT FOUND
 - 4"x4" CONCRETE MONUMENT SET, LS 4708
 - IRON PIN OR PIPE FOUND
 - 5/8" IRON ROD SET, LS 4708
 - WIRE FENCE
 - ELECTRIC UTILITY LINE (OVERHEAD)
 - UG- UNDERGROUND ELECTRIC SERVICE
 - CIV- CABLE TV LINE (OVERHEAD)
 - e- CHAIN LINK FENCE
 - WOODEN FENCE
 - CMP CORRUGATED METAL PIPE
 - RCP REINFORCED CONCRETE PIPE
 - LS LAND SURVEYOR
 - LB LICENSED BUSINESS
 - ORB OFFICIAL RECORD BOOK
 - PRM PERMANENT REFERENCE MONUMENT
 - PCP PERMANENT CONTROL POINT
 - ⊙ UTILITY POLE
 - R/W RIGHT-OF-WAY
 - NO ID. NO IDENTIFICATION
 - FLA. D.O.T. FLA. DEPT. OF TRANSPORTATION
 - ⊕ CENTERLINE
 - ⊙ 4"x4" CONCRETE MONUMENT, PRM, LS 4708
 - C.M. CONCRETE MONUMENT
 - AC. ACRES
 - EL. ELEVATION
 - NGVD 29 NATIONAL GEODETIC VERTICAL DATUM OF 1929
 - ⊙ MAIL AND DISC. PCP, LS 4708.

THIS PLAT PREPARED BY
MARK D. DUREN
AND ASSOCIATES, INC.
LB 7620
120 NW BURK AVE. STE. 103
LAKE CITY, FLA. 32055
(386) 758-9831 OFFICE
(386) 758-8010 FAX
WO# 09-356

CERTIFIED A TRUE, COMPLETE AND CORRECT COPY
BY THE COUNTY CLERK OF THE COURTS
AL EMMERSON
COUNTY CLERK



SEE SHEET 1 FOR LEGAL DESCRIPTION,
NOTES AND DEDICATION.
FIELD SURVEY DATE: FEBRUARY 16, 2010
DRAWING DATE: MAY 20, 2010