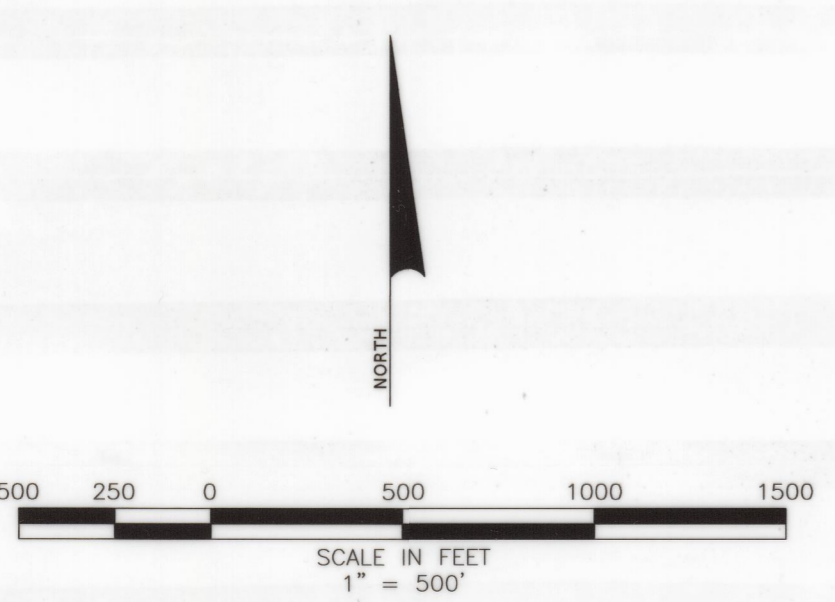
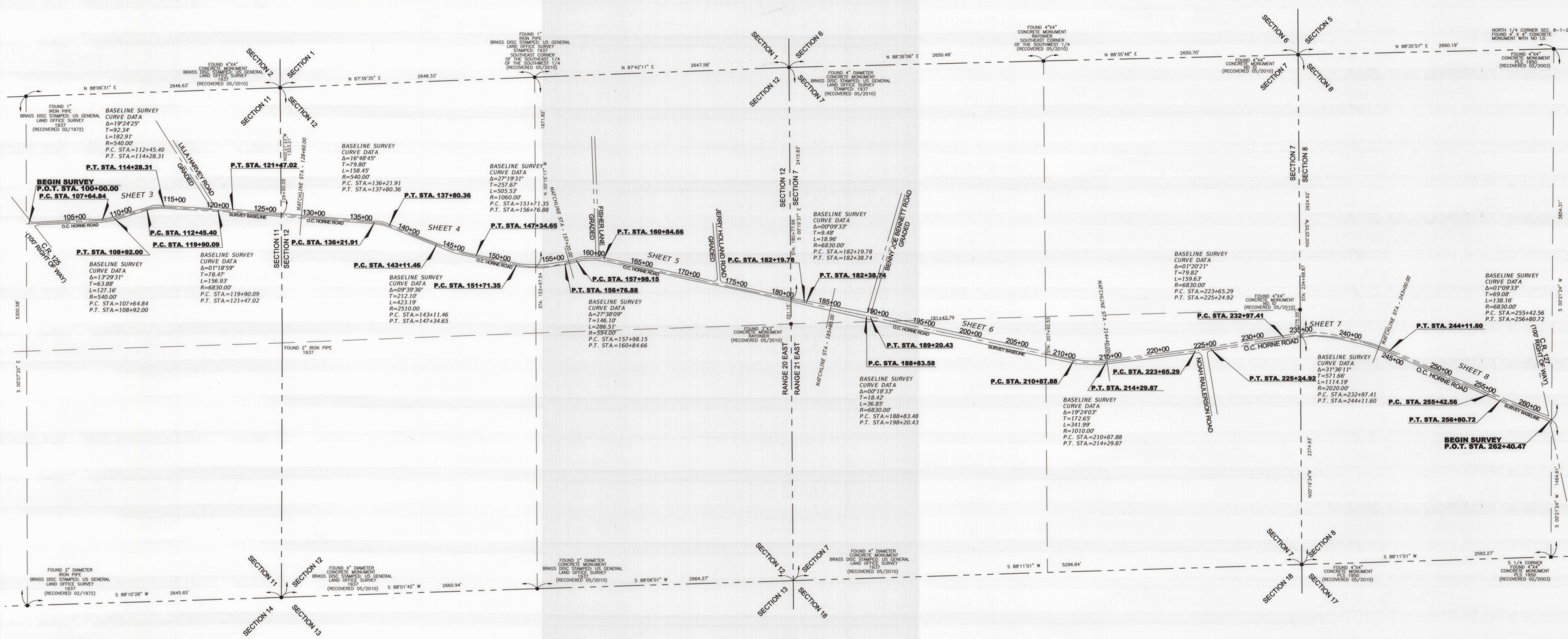


SECTION 7 & 8, TOWNSHIP 1 SOUTH, RANGE 21 EAST
SECTION 11 & 12, TOWNSHIP 1 SOUTH, RANGE 20 EAST



BAKER COUNTY

KEY SHEET

REVISIONS						L. D. BRADLEY LAND SURVEYORS 510 S. 5TH STREET MACLENNY, FL 32063 LB 6888	DRAWN BY: RBH	STATE OF FLORIDA DEPARTMENT OF TRANSPORTATION			SHEET TITLE: MAINTENANCE MAP	REF. DWG. NO.
DATE	BY	DESCRIPTION	DATE	BY	DESCRIPTION			ROAD NO.	COUNTY	FINANCIAL PROJECT ID		