

### LEGEND

B	=	BASELINE	N/D	=	NAIL AND DISK
B.O.S.	=	BEGINNING OF SURVEY	No.	=	NUMBER
B.W.F.	=	BARBED WIRE FENCE	N.T.S.	=	NOT TO SCALE
C	=	CENTERLINE	O.R.	=	OFFICIAL RECORDS
(C)	=	CALCULATED	(P)	=	PLAT
CB	=	CHORD BEARING	P.B.	=	PLAT BOOK
CH	=	CHORD	P.C.	=	POINT OF CURVATURE
C.M.	=	CONCRETE MONUMENT	PG.	=	PAGE
CONC.	=	CONCRETE	P.I.	=	POINT OF INTERSECTION
COND.	=	CONDITION	PK	=	PARKER KAYLON
COR.	=	CORNER	P.O.C.	=	POINT ON CURVE
CORP.	=	CORPORATION	P.O.T.	=	POINT ON TANGENT
D	=	DEGREE OF CURVE	PRELIM.	=	PRELIMINARY
Δ	=	DELTA ANGLE	P.R.C.	=	POINT OF REVERSE CURVATURE
E	=	EAST	PRM	=	PERMANENT REFERENCE MONUMENT
E.F.B.	=	ELECTRONIC FIELD BOOK	PLS	=	PROFESSIONAL LAND SURVEYOR
E.O.S.	=	END OF SURVEY	PSM	=	PROFESSIONAL SURVEYOR & MAPPER
EXIST.	=	EXISTING	P.T.	=	POINT OF TANGENCY
(F)	=	FIELD	R.	=	RADIUS; RANGE
F.A.P.	=	FEDERAL AID PROJECT	RD.	=	ROAD
FDOT	=	FLORIDA DEPARTMENT OF TRANSPORTATION	REF.	=	REFERENCE
FNC	=	FENCE	RLS	=	REGISTERED LAND SURVEYOR
FND.	=	FOUND	R-E	=	RANGE — EAST
F.P.	=	FINANCIAL PROJECT	R-W	=	RANGE — WEST
G.L.O.	=	GENERAL LAND OFFICE	RT.	=	RIGHT
GOV.T.	=	GOVERNMENT	R/W	=	RIGHT OF WAY
HWY.	=	HIGHWAY	S	=	SOUTH
H.W.F.	=	HOG WIRE FENCE	SEC.	=	SECTION
ID	=	IDENTIFICATION	S.R.	=	STATE ROAD
I.P.	=	IRON PIPE	S.R.D.	=	STATE ROAD DEPARTMENT
I.P.C.	=	IRON PIPE & CAP	ST.	=	STREET; SAINT
I.R.	=	IRON ROD	STA.	=	STATION
I.R.C.	=	IRON ROD & CAP	T	=	TOWNSHIP
L	=	LENGTH OF CURVE	T-N	=	TOWNSHIP — NORTH
LB	=	LICENSED BUSINESS	T-S	=	TOWNSHIP — SOUTH
L.O.C.	=	LIMITS OF CONSTRUCTION	W	=	WEST
LS	=	LICENSED SURVEYOR	W.B.F.	=	WOOD BOARD FENCE
LT	=	LEFT	W	=	WITH
MAINT.	=	COUNTY MAINTAINED	X	=	EASTING
N	=	NORTH	Y	=	NORTHING
N/A	=	NOT APPLICABLE	'	=	DEGREES
			'	=	MINUTES
			&	=	SECONDS
				=	AND

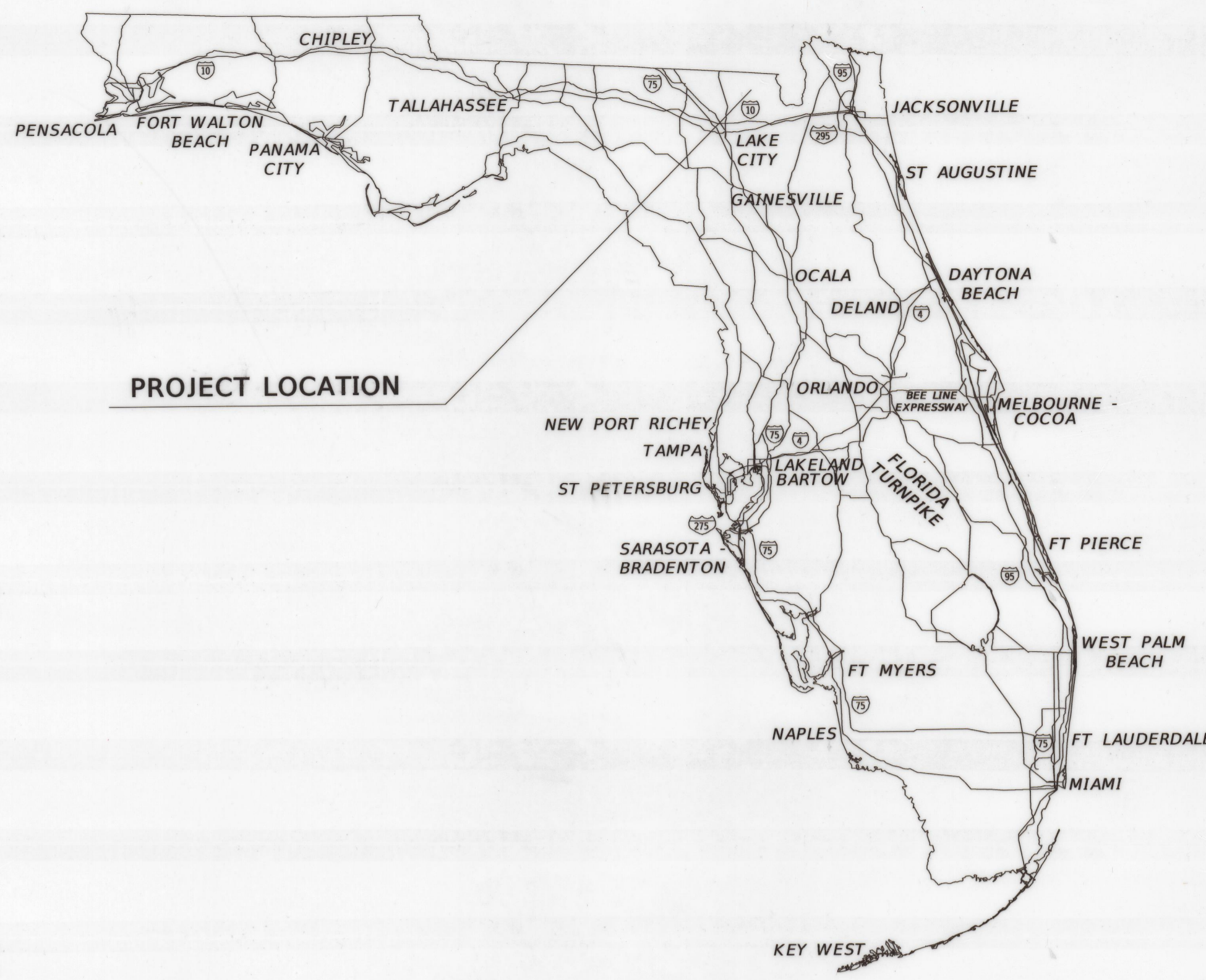
STATE OF FLORIDA  
DEPARTMENT OF TRANSPORTATION

---

**MAINTENANCE MAP**  
**SPECIFIC PURPOSE SURVEY**

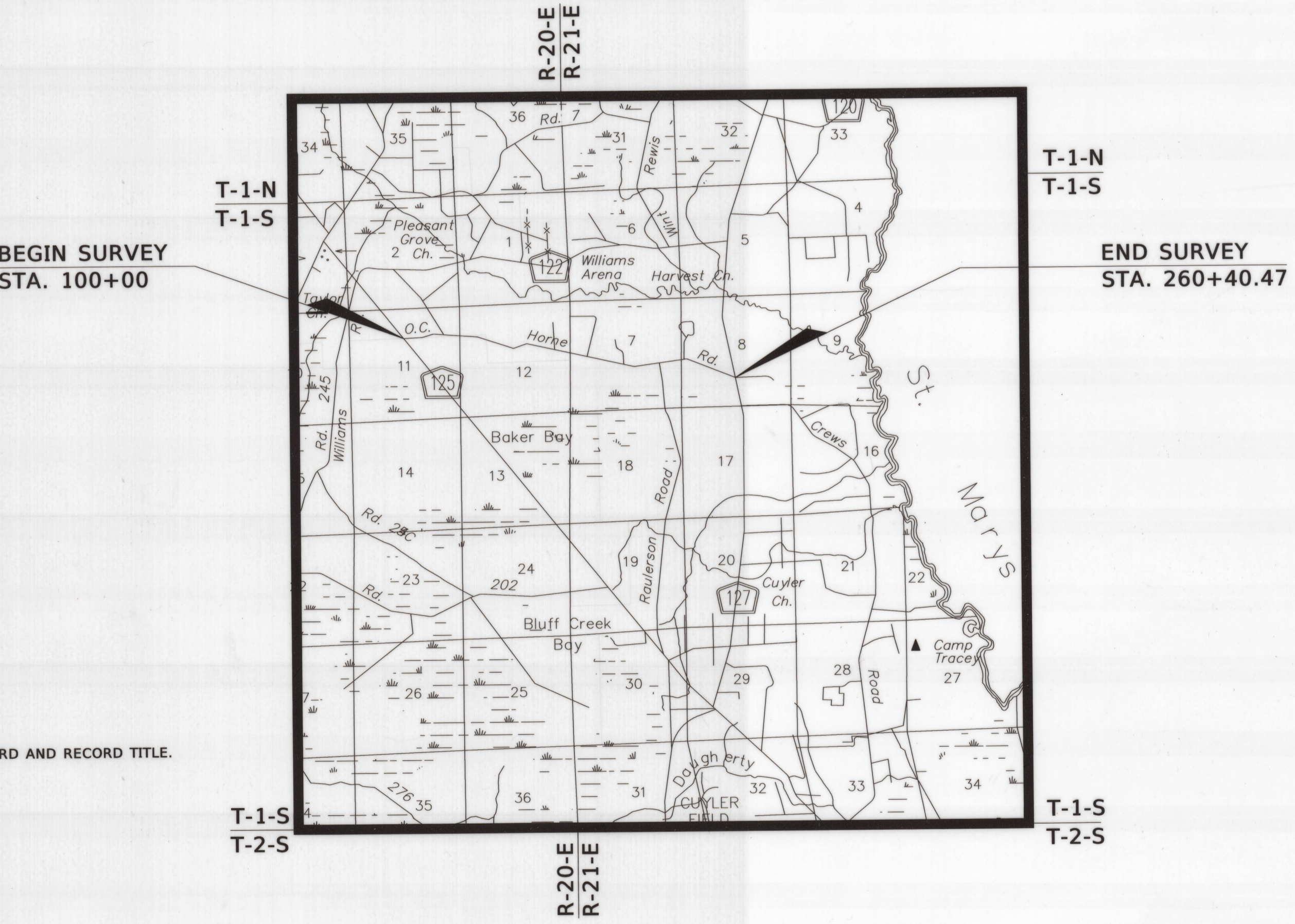
---

BAKER COUNTY  
O.C. HORNE ROAD  
LENGTH 3.08 MILES



EXISTING RIGHT OF WAY LINE	_____
EXISTING EASEMENT	_____
SECTION LINE	_____
TOWNSHIP AND RANGE LINE	_____

SHEET INDEX	
SHEET No.	SHEET DESCRIPTION
1	COVER SHEET
2	KEY SHEETS
3-8	DETAIL SHEETS



### GENERAL NOTES

- THIS MAINTENANCE MAP IS BASED ON THE FLORIDA STATE PLANE COORDINATE SYSTEM, FLORIDA NORTH ZONE, LAMBERT PROJECTION, NORTH AMERICAN DATUM 1983/2011 ADJUSTMENT, DERIVING A BEARING OF N 87°24'06" E ON THE BASELINE OF SURVEY OF O.C. HORNE ROAD BETWEEN BEGIN SURVEY STATION 100+00 (N. 5225878.00 E. 2668228.52) AND P.C. STATION 107+64.84 (N. 525912.67 E. 2668992.57).
- ALL TIES SHOWN REFER TO THE BASELINE OF SURVEY, UNLESS OTHERWISE NOTED.
- PROPERTY AND SUBDIVISION BOUNDARIES SHOWN HEREON WERE DETERMINED FROM FIELD SURVEY, PLATS OF RECORD AND RECORD TITLE.
- UNDERGROUND ENCROACHMENTS NOT LOCATED.
- ATTENTION IS DIRECTED TO THE FACT THAT THESE MAPS MAY HAVE BEEN REDUCED IN SIZE BY REPRODUCTION. THIS MUST BE CONSIDERED WHEN SCALING.

### SURVEYOR'S CERTIFICATION

THIS SURVEY WAS PERFORMED FOR THE SPECIFIC PURPOSE OF ESTABLISHING A SURVEY LINE AND LOCATING THE LIMITS OF MAINTAINED RIGHT OF WAY AS IDENTIFIED BY THE MAINTENANCE SUPERINTENDENT FOR THE TRANSPORTATION FACILITY SHOWN AND DEPICTED HEREON. I HEREBY CERTIFY THAT TO THE BEST OF MY KNOWLEDGE AND BELIEF THIS IS A TRUE, ACCURATE AND COMPLETE DEPICTION OF A FIELD SURVEY PERFORMED UNDER MY DIRECTION AND COMPLETED ON 12/15/2017. I FURTHER CERTIFY THAT SAID DRAWING IS IN COMPLIANCE WITH THE MINIMUM TECHNICAL STANDARDS AS SET FORTH BY THE FLORIDA BOARD OF PROFESSIONAL SURVEYORS AND MAPPERS, IN CHAPTER 5J-17 FLORIDA ADMINISTRATIVE CODE PURSUANT TO SECTION 472.027, FLORIDA STATUTES.

*Arnold J. Johns*  
04/06/2020  
ARNOLD J. JOHNS  
FLORIDA PROFESSIONAL SURVEYOR AND MAPPER NO. 4422  
510 S. 5TH STREET  
MACLENNY, FLORIDA 32063  
DATE: 04/06/2020  
NOT VALID WITHOUT SIGNATURE AND ORIGINAL RAISED SEAL

### MAINTENANCE MAP CERTIFICATION

THIS IS TO CERTIFY THAT SHEETS NUMBERED 1 TO 8, INCLUSIVE, CONSTITUTE A TRUE COPY OF THE STATE OF FLORIDA DEPARTMENT OF TRANSPORTATION MAINTENANCE MAP FOR O.C. HORNE ROAD, IN BAKER COUNTY, FLORIDA.

THE PROPERTY LABELED MAINTAINED RIGHT OF WAY ON SAID SHEETS HAS BEEN VESTED IN BAKER COUNTY, FLORIDA PURSUANT TO THE PROVISION OF SECTION 95.361, FLORIDA STATUTES.

IN WITNESS WHEREOF, WE HAVE HEREUNTO SET OUR HANDS AND AFFIXED THE SEAL OF THE BOARD OF COUNTY COMMISSIONERS, AT BAKER, FLORIDA, THIS 21<sup>st</sup> DAY OF April, A.D. 2020.  
*Sara Little* (WITNESS)  
*Sara Little*  
CHAIRPERSON, BAKER COUNTY COMMISSIONERS

### VICINITY MAP (NOT TO SCALE)

### MAINTENANCE ENGINEER CERTIFICATION

THIS IS TO CERTIFY THAT THE RIGHT OF WAY LIMITS AS SHOWN ON THIS MAP WERE IDENTIFIED BY MYSELF AS HAVING BEEN MAINTAINED CONTINUOUSLY FOR FOUR (4) YEARS WITHOUT INTERRUPTION.

BY: *Robert Fletcher*  
MAINTENANCE SUPERINTENDENT Date: 4-20-2020

### CLERK OF COURT CERTIFICATION

FILED FOR RECORD IN THE OFFICE OF THE CLERK OF THE CIRCUIT COURT FOR THE COUNTY OF BAKER, STATE OF FLORIDA, IN ROAD PLAT BOOK 4, PAGE 36, ON THE 23 DAY OF April, A.D. 2020.

*Stacie D. Harvey*  
CLERK OF THE CIRCUIT COURT  
BAKER COUNTY, FLORIDA

### COVER SHEET

O.C. HORNE ROAD  
DATA SOURCE: 20190427 REF:2017135  
SCALE: N/A

MAINTENANCE MAP	FLORIDA DEPARTMENT OF TRANSPORTATION SURVEYING AND MAPPING	BY BAKER COUNTY ROAD DEPARTMENT	BY	DATE	COUNTY ROAD NAME: O.C. HORNE ROAD	BAKER COUNTY	F.P. NO. N/A	SHEET 1 OF 8
			PRELIM	B. HARVEY				
		FOR DISTRICT SECRETARY	FINAL	B. HARVEY	03-22-20			
			CHECKED	A. JOHNS	03-22-20			
			REVISION	BY	DATE			

INSTR # 20200002790  
RECORDED 5/5/2020 9:12 AM  
Stacie D. Harvey, CLERK OF COURTS  
BAKER COUNTY, FLORIDA  
Page 1 of 8  
Rec: \$171.50  
DEPUTY CLERK JULIE