

Lakes at Woodlawn

A SUBDIVISION OF A PORTION OF THE NORTHEAST
1/4 OF SECTION 7, TOWNSHIP 3 SOUTH, RANGE 22
EAST, CITY OF MACCLENNY, BAKER COUNTY FLORIDA

CENTERLINE CURVE TABLE					
CURVE	LENGTH	RADIUS	DELTA	CHORD BEARING	CHORD LENGTH
CL14	854.42	750.00	65°16'22"	N50°16'19"W	808.96
CL16	674.84	750.00	51°33'13"	N43°24'45"W	652.30
CL17	106.71	500.00	12°13'43"	S23°44'59"E	106.51

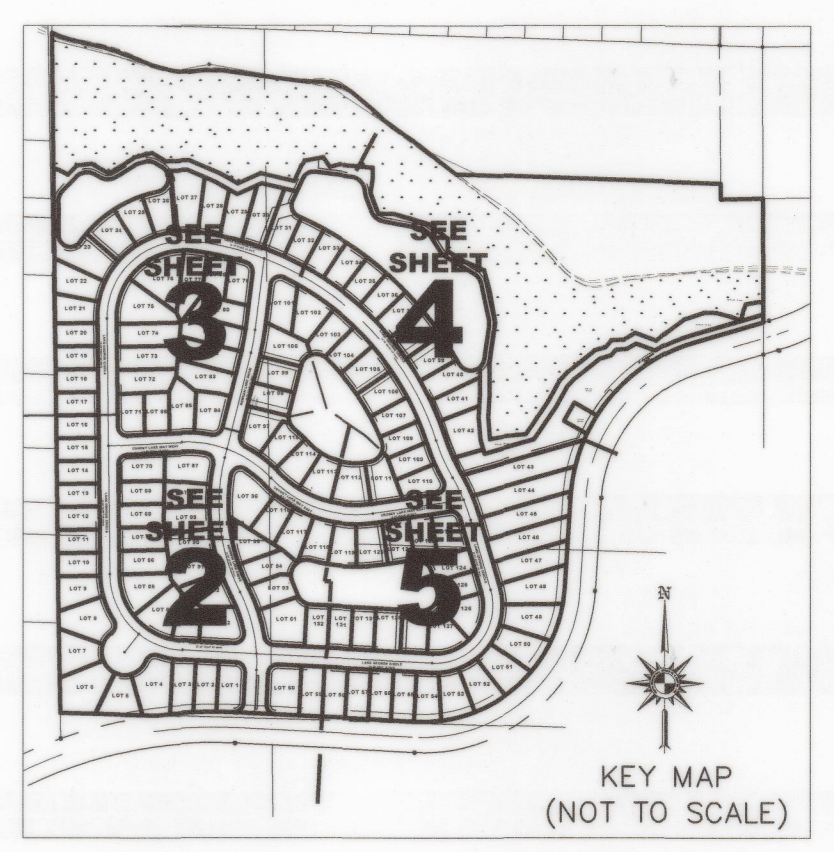
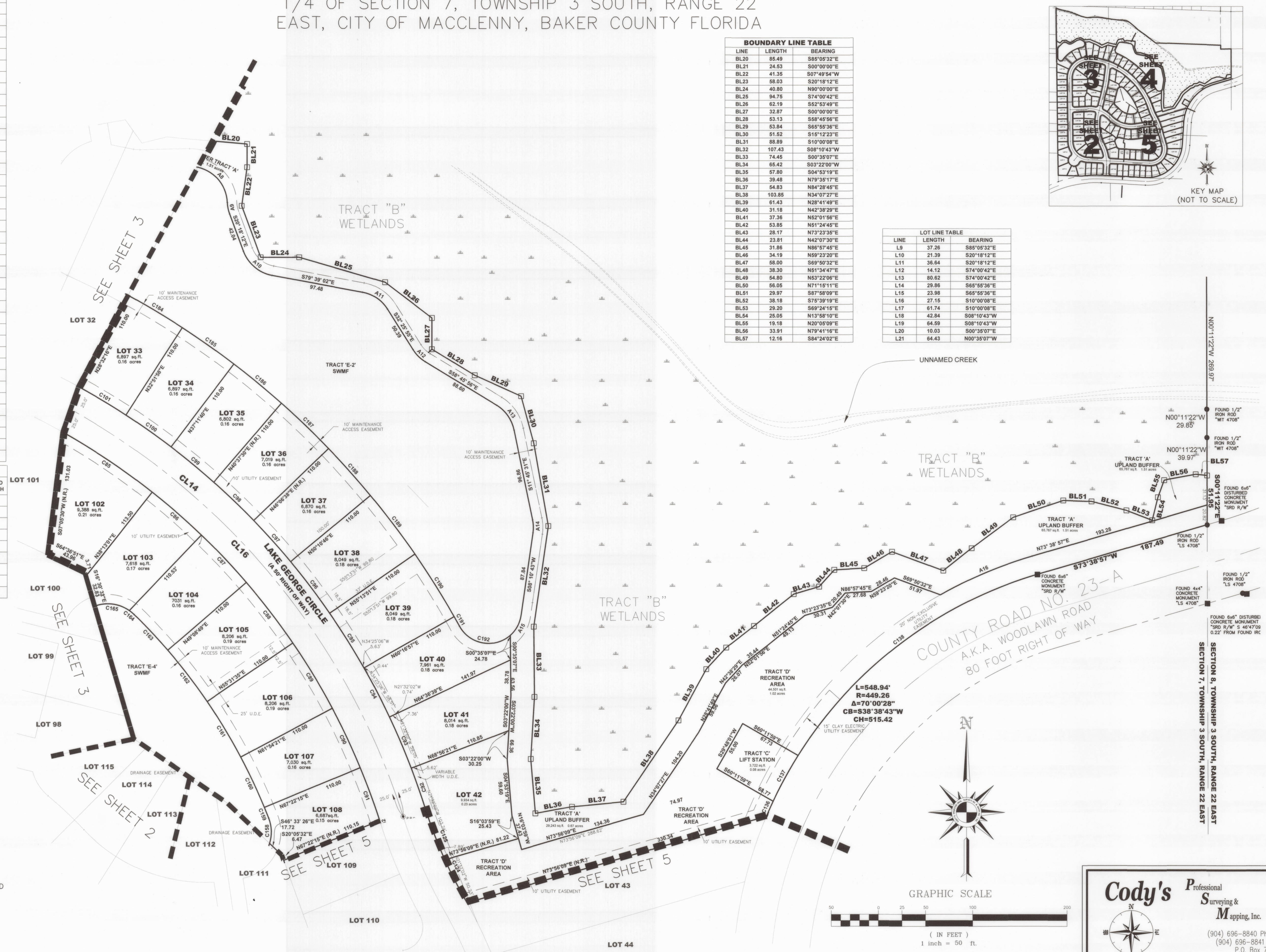
LOT CURVE TABLE					
CURVE	LENGTH	RADIUS	DELTA	CHORD BEARING	CHORD LENGTH
C85	114.08	725.00	009°00'57"	N56°17'28"W	113.96
C86	69.15	725.00	005°27'54"	N49°03'02"W	69.13
C87	69.15	725.00	005°27'54"	N43°35'08"W	69.13
C88	80.72	725.00	006°22'46"	N37°39'48"W	80.68
C89	80.72	725.00	006°22'46"	N31°17'02"W	80.68
C90	69.15	725.00	005°27'54"	N25°21'42"W	69.13
C91	59.57	725.00	004°42'27"	N20°16'32"W	59.55
C92	46.33	775.00	003°25'32"	N19°20'54"W	46.33
C93	58.55	775.00	004°19'42"	N23°13'31"W	58.53
C94	58.55	775.00	004°19'42"	N27°33'13"W	58.53
C95	68.33	775.00	005°03'05"	N32°14'36"W	68.31
C96	68.33	775.00	005°03'05"	N37°17'41"W	68.31
C97	58.55	775.00	004°19'42"	N41°59'05"W	58.53
C98	58.55	775.00	004°19'42"	N46°18'47"W	58.53
C99	58.55	775.00	004°19'42"	N50°38'29"W	58.53
C100	58.55	775.00	004°19'42"	N54°58'11"W	58.53
C101	58.55	775.00	004°19'42"	N59°17'53"W	58.53
C123	6.43	525.00	000°42'06"	N29°30'48"W	6.43
C124	44.60	475.00	005°22'46"	S27°10'28"E	44.58
C125	56.78	475.00	006°50'57"	S21°03'36"E	56.75
C136	17.44	449.26	002°13'28"	S24°05'36"W	17.44
C137	55.04	449.26	007°01'12"	S28°42'56"W	55.01
C138	324.81	449.26	041°25'25"	S52°56'15"W	317.78
C158	27.19	40.00	038°57'13"	N01°59'59"W	26.67
C159	12.37	615.00	001°09'09"	N22°03'11"W	12.37
C160	58.66	615.00	005°27'54"	N25°21'42"W	58.64
C161	68.47	615.00	006°22'46"	N31°17'02"W	68.44
C162	68.47	615.00	006°22'46"	N37°39'48"W	68.44
C163	51.98	615.00	004°50'33"	N43°16'27"W	51.96
C164	6.71	40.00	009°36'31"	N50°29'59"W	6.70
C165	38.52	40.00	055°10'14"	N82°53'22"W	37.05
C184	66.86	885.00	004°19'42"	S59°17'53"E	66.84
C185	66.86	885.00	004°19'42"	S54°58'11"E	66.84
C186	65.13	885.00	004°13'00"	S50°41'50"E	65.12
C187	69.08	885.00	004°28'20"	S45°21'10"E	69.06
C188	66.36	885.00	004°17'46"	S41°58'07"E	66.34
C189	78.03	885.00	005°03'05"	S37°17'41"E	78.00
C190	78.03	885.00	005°03'05"	S32°14'36"E	78.00
C191	11.78	885.00	000°45'45"	S29°20'11"E	11.78
C192	62.57	35.00	102°25'41"	S80°10'09"E	54.56

TRACT A CURVE TABLE					
CURVE	LENGTH	RADIUS	DELTA	CHORD BEARING	CHORD LENGTH
A8	56.05	40.00	080°17'05"	S42°35'50"E	51.58
A9	12.46	40.00	017°50'54"	S11°22'45"E	12.41
A10	41.43	40.00	099°20'50"	S49°58'37"E	39.80
A11	32.96	40.00	047°13'07"	S56°02'28"E	32.04
A12	18.38	40.00	026°20'01"	S45°35'55"E	18.22
A13	32.82	40.00	047°00'26"	S35°15'43"E	31.90
A14	13.92	40.00	019°56'14"	S01°47'24"E	13.85
A15	24.70	35.00	040°26'18"	S28°23'52"W	24.19
A16	105.67	469.26	012°54'07"	N67°11'54"E	105.45

- LEGEND**
- A.K.A. - DENOTES ALSO KNOWN AS
 - CB - DENOTES CHORD BEARING
 - C# - DENOTES LOT LINE CURVE NUMBER
 - CL# - DENOTES LOT CHORD LENGTH
 - CL# - DENOTES CENTERLINE CURVE NUMBER
 - D# - DENOTES DRAINAGE EASEMENT CURVE NUMBER
 - ft. - DENOTES FEET
 - L - DENOTES ARC LENGTH
 - LS - DENOTES LAND SURVEYOR
 - N.R. - DENOTES NON-RADIAL
 - O.R.B. - DENOTES OFFICIAL RECORDS BOOK
 - P.C. - DENOTES POINT OF CURVATURE
 - P.C.P. - DENOTES PERMANENT CONTROL POINT
 - P.I. - DENOTES POINT OF STREET INTERSECTION
 - P.I.N. - DENOTES PARCEL IDENTIFICATION NUMBER
 - PLS - DENOTES PROFESSIONAL LAND SURVEYOR
 - P.R.C. - DENOTES POINT OF REVERSE CURVATURE
 - P.R.M. - DENOTES PERMANENT REFERENCE MONUMENT
 - P.T. - DENOTES POINT OF TANGENCY
 - R - DENOTES RADIUS
 - R.P. - DENOTES RADIUS POINT
 - R/W - DENOTES RIGHT OF WAY
 - SRD - DENOTES STATE ROAD DEPARTMENT
 - STA - DENOTES STATION
 - U.D.E. - DENOTES UNOBSTRUCTED DRAINAGE EASEMENT
- Δ - DENOTES CENTRAL ANGLE (DELTA)
 - - DENOTES FOUND IRON AS NOTED
 - - DENOTES FOUND CONCRETE MONUMENT AS NOTED
 - - DENOTES SET CONCRETE MONUMENT STAMPED "FLOWERS PSM 6271" P.R.M.
 - ⊙ - DENOTES SET P.K. NAIL AND DISK STAMPED "FLOWERS PSM 6271" P.C.P.

BOUNDARY LINE TABLE		
LINE	LENGTH	BEARING
BL20	85.49	S85°09'32"E
BL21	24.53	S00°00'00"E
BL22	41.35	S07°49'54"W
BL23	58.03	S20°18'12"E
BL24	40.80	N90°00'00"E
BL25	94.75	S74°00'42"E
BL26	52.19	S52°53'49"E
BL27	32.87	S00°00'00"E
BL28	53.13	S68°45'56"E
BL29	53.84	S65°55'36"E
BL30	51.52	S15°12'23"E
BL31	88.89	S10°00'08"E
BL32	107.43	S08°10'43"W
BL33	74.45	S02°30'37"E
BL34	65.42	S03°22'00"W
BL35	57.80	S04°53'19"E
BL36	39.48	N79°35'17"E
BL37	54.83	N84°28'45"E
BL38	103.85	N34°07'27"E
BL39	61.43	N28°41'49"E
BL40	31.16	N42°38'39"E
BL41	37.36	N52°01'56"E
BL42	53.85	N61°24'45"E
BL43	28.17	N73°23'35"E
BL44	23.81	N42°07'30"E
BL45	31.86	N86°57'45"E
BL46	34.19	N69°23'20"E
BL47	58.00	S69°50'32"E
BL48	38.30	N61°34'47"E
BL49	54.80	N53°22'06"E
BL50	56.05	N71°15'11"E
BL51	29.97	S87°58'09"E
BL52	38.18	S75°39'19"E
BL53	29.20	S69°24'15"E
BL54	25.05	N13°58'07"E
BL55	19.18	N20°05'09"E
BL56	33.91	N79°41'16"E
BL57	12.16	S84°24'02"E

LOT LINE TABLE		
LINE	LENGTH	BEARING
L9	37.26	S85°09'32"E
L10	21.39	S20°18'12"E
L11	36.84	S20°18'12"E
L12	14.12	S74°00'42"E
L13	80.62	S74°00'42"E
L14	29.86	S65°55'36"E
L15	23.98	S65°55'36"E
L16	27.15	S10°00'08"E
L17	61.74	S10°00'08"E
L18	42.84	S09°10'43"W
L19	64.59	S08°10'43"W
L20	10.03	S00°35'07"W
L21	64.43	N00°35'07"W



Cody's Professional
Surveying &
Mapping, Inc.

(904) 696-8840 Phone
(904) 696-8841 Fax
P.O. Box 7540
Jacksonville, Florida, 32238