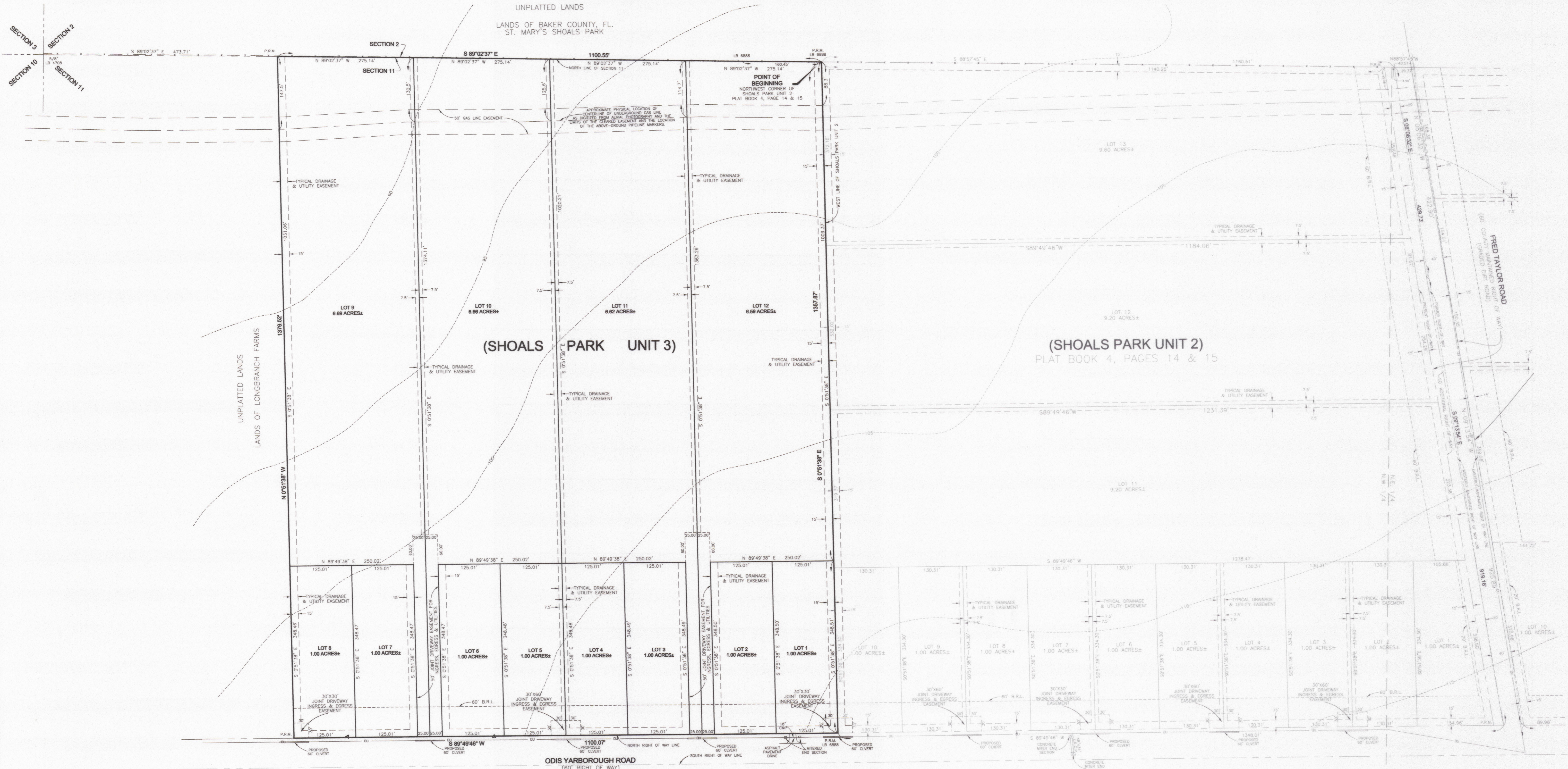
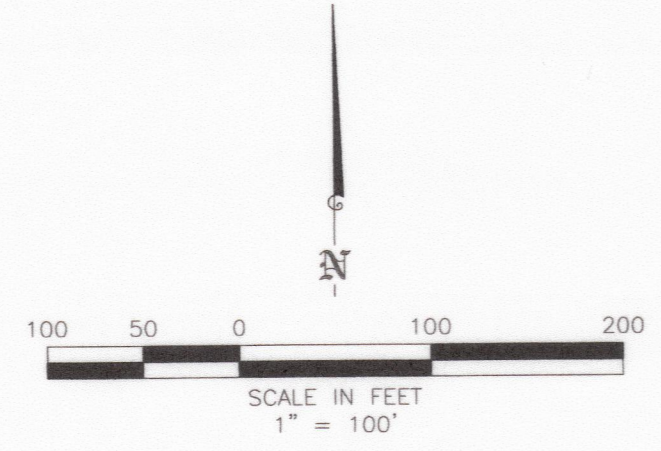


"SHOALS PARK UNIT 3"
BEING A PORTION OF
SECTION 11
TOWNSHIP 2 SOUTH, RANGE 21 EAST
BAKER COUNTY, FLORIDA



- LEGEND:**
- = FOUND 1/2" IRON PIPE UNLESS OTHERWISE NOTED
 - ⊙ = SET PAKER-KALON NAIL STAMPED LB 6888
 - ⊗ = FOUND IRON ROD UNLESS OTHERWISE NOTED
 - = SET 1/2" IRON PIPE & CAP STAMPED LB 6888
 - = FOUND 4"x4" CONCRETE MONUMENT UNLESS OTHERWISE NOTED
 - = SET 4"x4" CONCRETE MONUMENT STAMPED LB 6888
 - = FENCE
 - = OVERHEAD UTILITY LINES
 - = CONTOUR INTERVAL & ELEVATION
 - = UTILITY POLE WOODEN
 - = UTILITY POLE CONCRETE
 - = CUY POLE
 - = CUY ANCHOR
 - = UNDERGROUND TELEPHONE RISER BOX
 - R.L.S. = REGISTERED LAND SURVEYOR
 - P.L.S. = PROFESSIONAL LAND SURVEYOR
 - L.S. = LICENSED SURVEYOR
 - D.B. = DEED BOOK
 - O.R.B. = OFFICIAL RECORD BOOK
 - P.C. = PAGE
 - (F) = FIELD MEASURED
 - (D) = DEED
 - (C) = CALCULATED
 - ID = IDENTIFICATION
 - LB = LICENSED BUSINESS
 - B.R.L. = BUILDING RESTRICTION LINE
 - R.C.P. = REINFORCED CONCRETE PIPE
 - E.R.C.P. = ELLIPTICAL REINFORCED CONCRETE PIPE
 - P.R.M. = PERMANENT REFERENCE MONUMENT

PREPARED BY:

 LD BRADLEY LAND SURVEYORS <small>Old World Knowledge... New Age Technology</small>	L. D. BRADLEY LAND SURVEYORS 510 SOUTH 5TH STREET MACLENNY, FLORIDA 32063 PHONE (904) 786-6400 FAX (904) 786-1479 LICENSED BUSINESS No. 6888	
	W.O. NO.: 18-052 CHECKED BY: AJJ	SURVEY DATE: 04/25/18 CAD FILE: 18052.dwg

XREF: D-13-287
XREF: D-15-085
W.O. D-18-052

SEE SHEET 1 FOR GENERAL NOTES AND DESCRIPTIONS
THIS MAP IS NOT COMPLETE WITHOUT SHEETS 1 AND 2