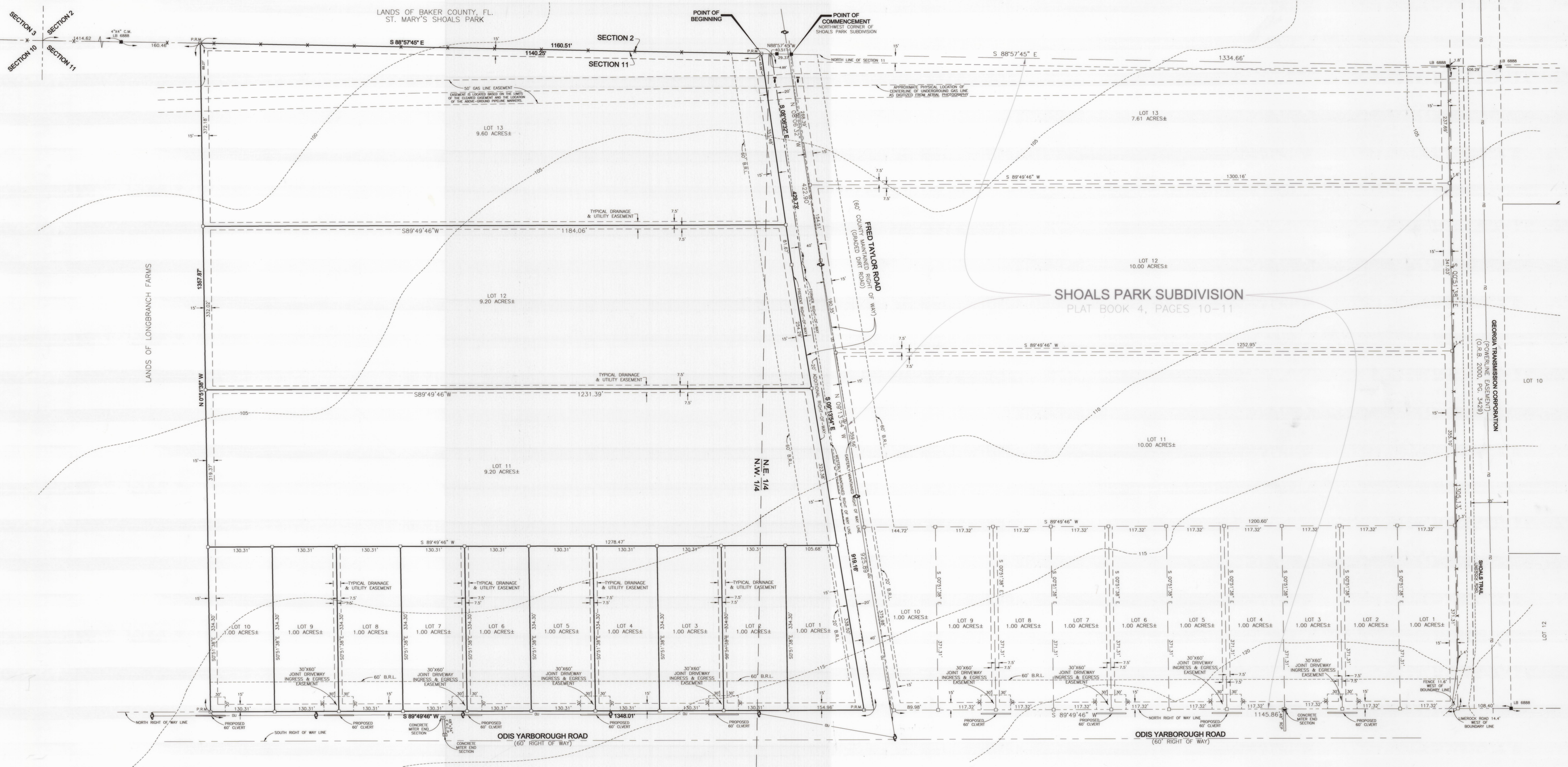
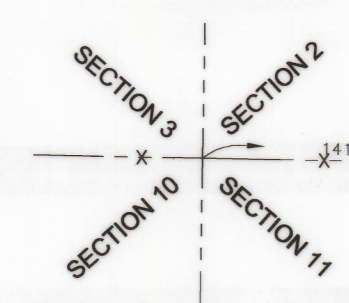
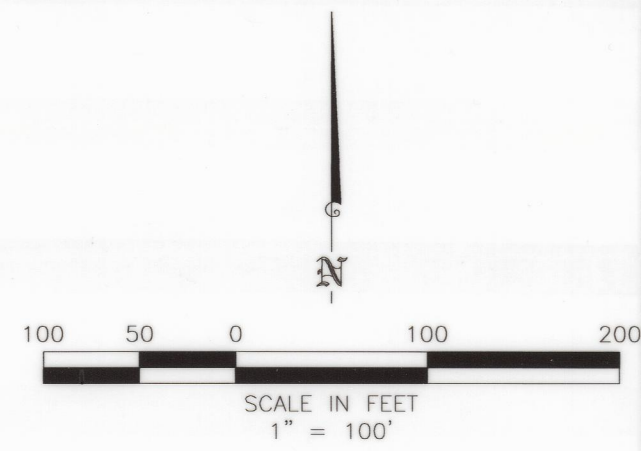


"SHOALS PARK UNIT 2"
 BEING A PORTION OF
 SECTION 11
 TOWNSHIP 2 SOUTH, RANGE 21 EAST
 BAKER COUNTY, FLORIDA



- LEGEND:**
- = FOUND 1/2" IRON PIPE UNLESS OTHERWISE NOTED
 - = SET PAKER-KALON NAIL STAMPED LB 6888
 - ⊙ = FOUND IRON ROD UNLESS OTHERWISE NOTED
 - ⊚ = SET 1/2" IRON PIPE & CAP STAMPED LB 6888
 - ⊛ = FOUND 4"x4" CONCRETE MONUMENT UNLESS OTHERWISE NOTED
 - ⊜ = SET 4"x4" CONCRETE MONUMENT STAMPED LB 6888
 - = FENCE
 - (U) = OVERHEAD UTILITY LINES
 - (C) = CONTOUR INTERVAL & ELEVATION
 - = UTILITY POLE WOODEN
 - = UTILITY POLE CONCRETE
 - = GUY POLE
 - = GUY ANCHOR
 - = UNDERGROUND TELEPHONE RISER BOX
 - R.L.S. = REGISTERED LAND SURVEYOR
 - P.L.S. = PROFESSIONAL LAND SURVEYOR
 - L.S. = LICENSED SURVEYOR
 - D.B. = DEED BOOK
 - O.R.B. = OFFICIAL RECORD BOOK
 - P.G. = PAGE
 - (F) = FIELD MEASURED
 - (D) = DEED
 - (C) = CALCULATED
 - ID = IDENTIFICATION
 - LB = LICENSED BUSINESS
 - B.R.L. = BUILDING RESTRICTION LINE
 - R.C.P. = REINFORCED CONCRETE PIPE
 - E.R.C.P. = ELLIPTICAL REINFORCED CONCRETE PIPE
 - P.R.M. = PERMANENT REFERENCE MONUMENT

PREPARED BY:

 LD BRADLEY LAND SURVEYORS <small>Old World Knowledge... New Age Technology</small>	L. D. BRADLEY LAND SURVEYORS 5773 NORMANDY BOULEVARD, JACKSONVILLE, FLORIDA 32205 PHONE (904) 786-6400 FAX (904) 786-1479 LICENSED BUSINESS No. 6888
	W.O. NO.: 15-085 SURVEY DATE: 07/15/15 DRAFTED BY: DHB, DNS CHECKED BY: AJJ CAD FILE: 15085.dwg FB/PG: 807/37, 923/59, 1053/24