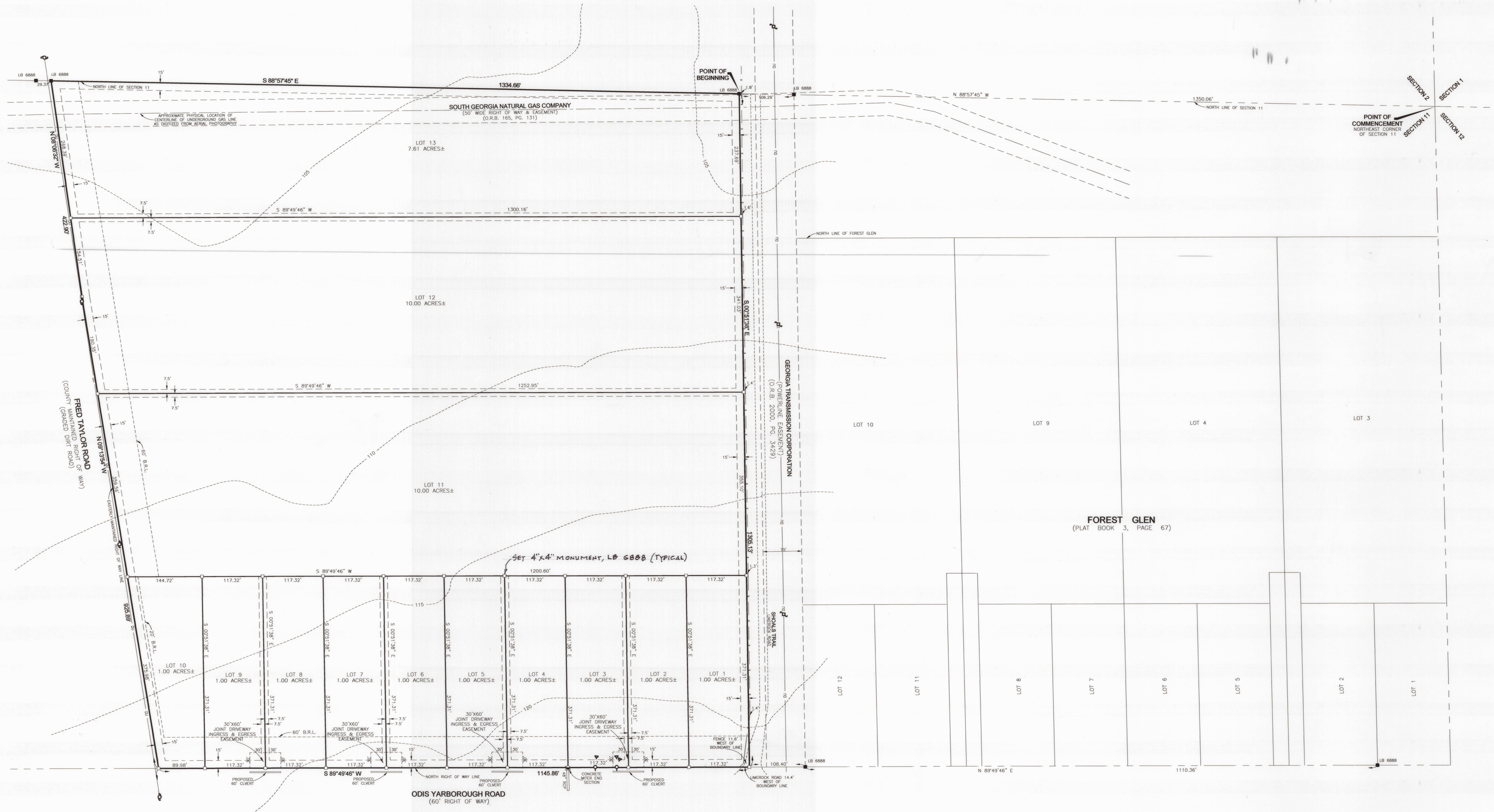
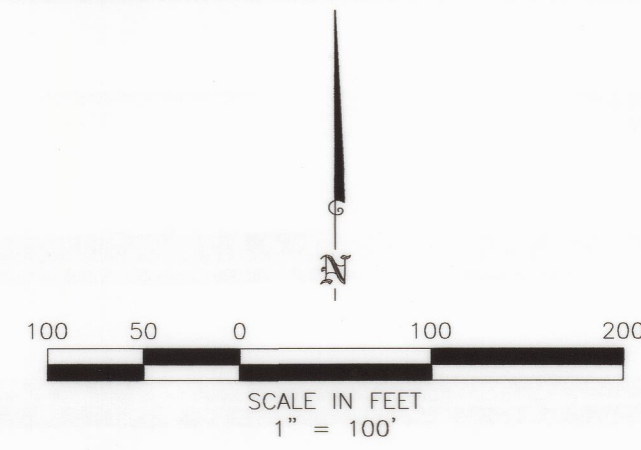


# "SHOALS PARK SUBDIVISION"

BEING A PORTION OF  
SECTION 11  
TOWNSHIP 2 SOUTH, RANGE 21 EAST  
BAKER COUNTY, FLORIDA



REVIEWED AND APPROVED FOR THE COUNTY CLERK OF BAKER COUNTY, FLORIDA  
ON THIS 18 DAY OF DEC. 2013  
BY AL FRASER  
COUNTY CLERK

- LEGEND:
- = FOUND 1/2" IRON PIPE UNLESS OTHERWISE NOTED
  - = SET PAPER-KALON NAIL STAMPED LB 6888
  - = FOUND IRON ROD UNLESS OTHERWISE NOTED
  - = SET 1/2" IRON PIPE & CAP STAMPED LB 6888
  - = FOUND 4"x4" CONCRETE MONUMENT UNLESS OTHERWISE NOTED
  - = FENCE
  - DU = OVERHEAD UTILITY LINES
  - 120' = CONTOUR INTERVAL & ELEVATION
  - = UTILITY POLE WOODEN
  - = UTILITY POLE CONCRETE
  - = GUY POLE
  - = GUY ANCHOR
  - = UNDERGROUND TELEPHONE RISER BOX
  - R.L.S. = REGISTERED LAND SURVEYOR
  - P.L.S. = PROFESSIONAL LAND SURVEYOR
  - L.S. = LICENSED SURVEYOR
  - D.B. = DEED BOOK
  - O.R.B. = OFFICIAL RECORD BOOK
  - P.G. = PAGE
  - (T) = FIELD MEASURED
  - (D) = DEED
  - (C) = CALCULATED
  - ID = IDENTIFICATION
  - LB = LICENSED BUSINESS
  - B.R.L. = BUILDING RESTRICTION LINE

PREPARED BY:  
**LD BRADLEY**  
LAND SURVEYORS  
Old World Knowledge... New Age Technology  
L. D. BRADLEY LAND SURVEYORS  
5773 NORMANDY BOULEVARD,  
JACKSONVILLE, FLORIDA 32205  
PHONE (904) 786-6400 FAX (904) 786-1479  
LICENSED BUSINESS No. 6888

W.O. NO.: 13-287	SURVEY DATE: 09/10/13	DRAFTED BY: DHB
CHECKED BY: AJJ	CAD FILE: 13287.DWG	FB 807, 923 PG 37, 59

SEE SHEET 1 FOR GENERAL NOTES AND DESCRIPTIONS  
THIS MAP IS NOT COMPLETE WITHOUT SHEETS 1 AND 2