



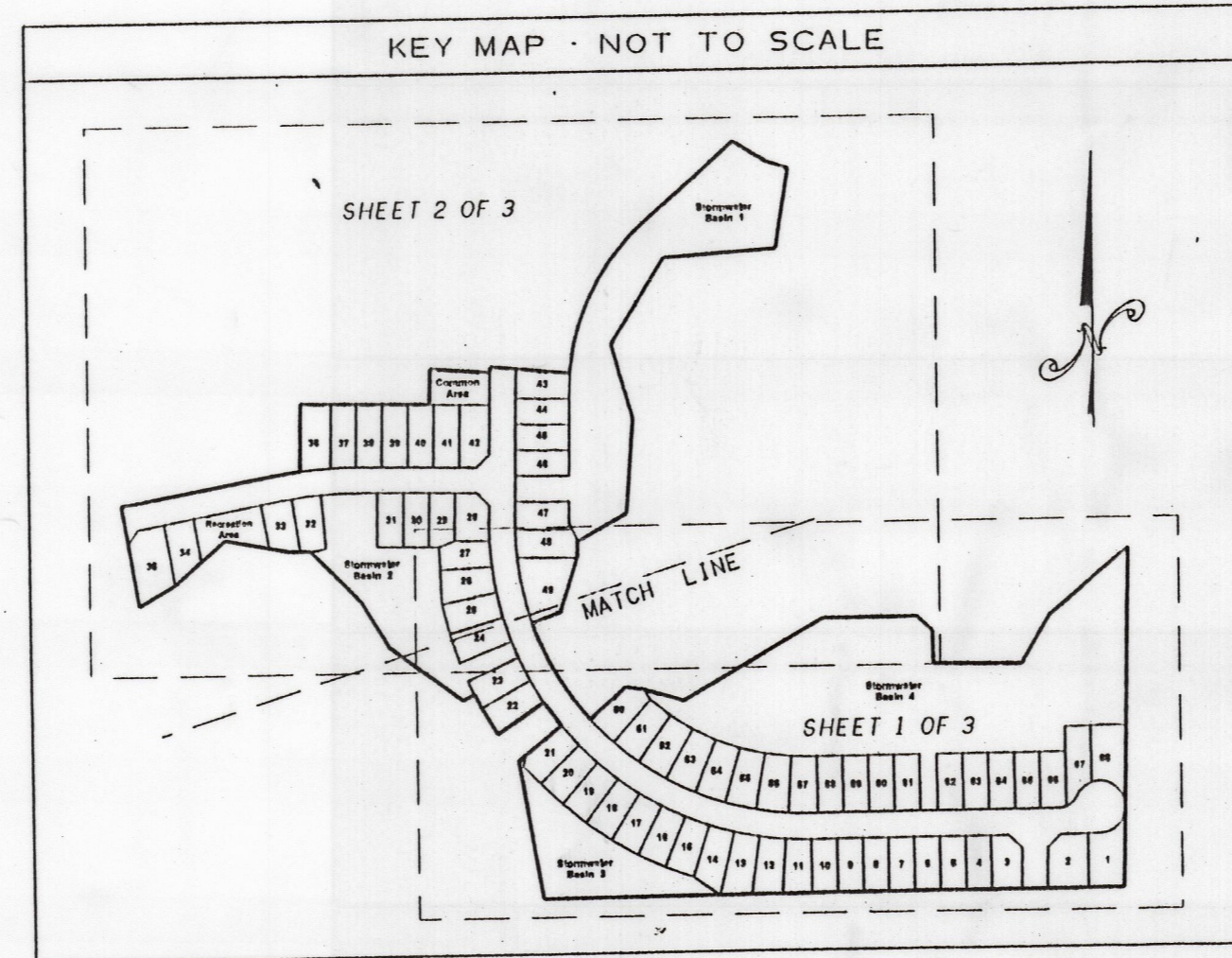
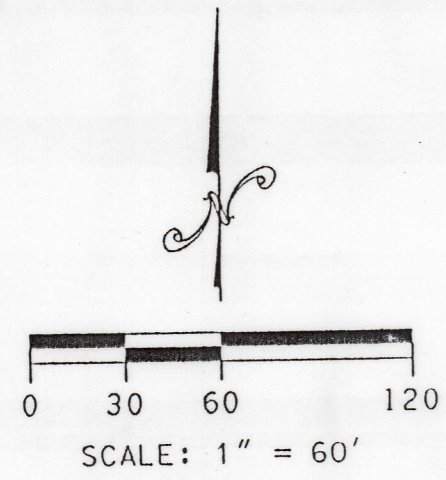
BAILEY BISHOP & LANE, INC.
 484 SW COMMERCE DRIVE, SUITE 130
 P. O. BOX 3717
 LAKE CITY, FL 32056-3717
 PH. (386) 752-5640 FAX (386) 755-7771
 Eng. Lic. 7362 Survey Lic. LB-0006685
 BBL Job No. 030313KEN

CYPRESS POINTE, UNIT 1
 IN
 SECTION 28, TOWNSHIP 2 SOUTH, RANGE 22 EAST
 CITY OF MACCLENNY,
 BAKER COUNTY, FLORIDA

DEVELOPER:
 CYPRESS POINTE OF MACCLENNY, LLC -
 A FLORIDA LIMITED LIABILITY COMPANY
 C/O DOWN MOUNTAIN
 4901 BEVERLY AVENUE
 JACKSONVILLE, FL 32210
 (904) 493-2706

SURVEYOR:
 BRIAN SCOTT DANIEL
 484 SW COMMERCE DRIVE, SUITE 135
 LAKE CITY, FL 32025
 (386) 752-5640
 REG. NO. 6449

ENGINEER:
 ANN M. NEWLAND
 484 SW COMMERCE DRIVE, SUITE 135
 LAKE CITY, FL 32025
 (386) 752-5640
 REG. NO. 59818



CURVE NO.	RADIUS	DELTA	ARC LENGTH	CHORD BEARING	CHORD DIST.
1-1	60.00'	89°49'41"	94.07'	N 46°17'08" E	84.73'
11-1	730.00'	4°16'15"	84.42'	S 88°00'28" E	54.40'
12-1	730.00'	4°42'38"	60.02'	S 83°39'03" E	60.00'
13-1	730.00'	4°42'38"	60.02'	S 78°55'50" E	60.00'
14-1	730.00'	4°42'38"	60.02'	S 74°14'20" E	60.00'
15-1	730.00'	4°42'38"	60.02'	S 69°31'08" E	60.00'
16-1	730.00'	4°42'38"	60.02'	S 64°48'31" E	60.00'
17-1	730.00'	4°42'38"	60.02'	S 60°05'53" E	60.00'
18-1	730.00'	4°42'38"	60.02'	S 55°23'16" E	60.00'
19-1	730.00'	4°42'38"	60.02'	S 50°40'10" E	60.00'
20-1	730.00'	4°42'38"	60.02'	S 45°56'27" E	60.00'
21-1	730.00'	4°42'38"	60.02'	S 41°14'26" E	60.00'
22-1	730.00'	4°42'38"	60.02'	S 36°30'11" E	60.00'
23-1	730.00'	4°42'38"	60.02'	S 31°45'57" E	60.00'
24-1	730.00'	4°42'38"	60.02'	S 26°56'11" E	60.00'
25-1	730.00'	4°42'38"	60.02'	S 22°05'09" E	60.00'
26-1	730.00'	4°42'38"	60.02'	S 17°12'29" E	60.00'
48-1	670.00'	4°01'42"	74.48'	N 89°43'23" E	217.44'
49-1	670.00'	13°14'14"	154.79'	N 12°26'47" W	154.45'
50-1	670.00'	6°22'10"	74.48'	N 44°50'50" W	74.44'
51-1	670.00'	6°22'10"	74.48'	N 51°13'00" W	74.44'
52-1	670.00'	6°22'10"	74.48'	N 57°35'10" W	74.44'
53-1	670.00'	6°22'10"	74.48'	N 63°57'20" W	74.44'
54-1	670.00'	6°22'10"	74.48'	N 70°19'30" W	74.44'
55-1	670.00'	6°22'10"	74.48'	N 76°41'40" W	74.44'
56-1	670.00'	6°22'10"	74.48'	N 83°03'51" W	74.44'
57-1	670.00'	6°22'10"	74.48'	N 88°15'47" W	74.44'
67-1	60.00'	18°53'05"	16.48'	S 77°56'21" W	16.41'
67-2	60.00'	43°30'26"	45.56'	S 48°31'26" W	44.47'
68-1	60.00'	41°51'32"	36.53'	S 47°42'00" W	35.72'
A-3	730.00'	111°05'38"	116.34'	N 54°10'32" W	98.95'
B-3	670.00'	3°08'54"	40.01'	S 22°34'40" E	40.00'
B-4	730.00'	22°35'51"	264.25'	N 30°21'49" W	262.54'
C-1	700.00'	91°18'24"	1,115.52'	N 44°37'25" W	1,001.17'

LEGEND	
○	DENOTES 5/8" IRON ROD & LAP SET (LB6685)
●	DENOTES IRON PIPE OR REBAR FOUND
□	DENOTES 4" x 4" CONCRETE MONUMENT SET (LB6685)
■	DENOTES 4" x 4" CONCRETE MONUMENT FOUND
⊙	DENOTES NAIL & DISK SET
⊗	DENOTES NAIL & DISK FOUND
±	MDL OR LESS
PC	POINT OF CURVATURE
PT	POINT OF TANGENCY
PI	POINT OF INTERSECTION
PRC	POINT OF REVERSE CURVATURE
PCC	POINT OF COMPOUND CURVATURE
R	RADIUS
T	TANGENT
L	ARC LENGTH
Δ	CENTRAL ANGLE
CH	CHORD BEARING & DISTANCE
PCP	PERMANENT CONTROL POINT
PRM	PERMANENT REFERENCE MONUMENT
R/W	RIGHT OF WAY
→	DIRECTION OF DRAINAGE
L1	LINE NUMBER
(1-1)	CURVE NUMBER
N	NORTH
E	EAST
S	SOUTH
W	WEST
CL	CENTERLINE
PL	PLAT
DEED	DEED
CALC	CALCULATED
MEAS	MEASURED
OFFS	OFFSET
NO ID	NO IDENTIFICATION
FOUND	FOUND
CM	CONCRETE MONUMENT
IP	IRON PIPE
IPC	IRON PIPE & CAP
RB	REBAR
RBC	REBAR & CAP
IR	IRON ROD
IRC	IRON ROD & CAP
NL	NAIL
NLD	NAIL & DISK
ORB	OFFICIAL RECORDS BOOK
PAGE(S)	PAGE(S)
POC	POINT OF COMMENCEMENT
POB	POINT OF BEGINNING
SEC	SECTION
TWP	TOWNSHIP
RNG	RANGE

CERTIFIED A TRUE, COMPLETE AND CORRECT COPY
 BAKER COUNTY CLERK OF THE COURTS
 BY **AL FRANK**
 DEPUTY CLERK
 CLERK OF CIRCUIT COURT
 BAKER COUNTY, FLORIDA

