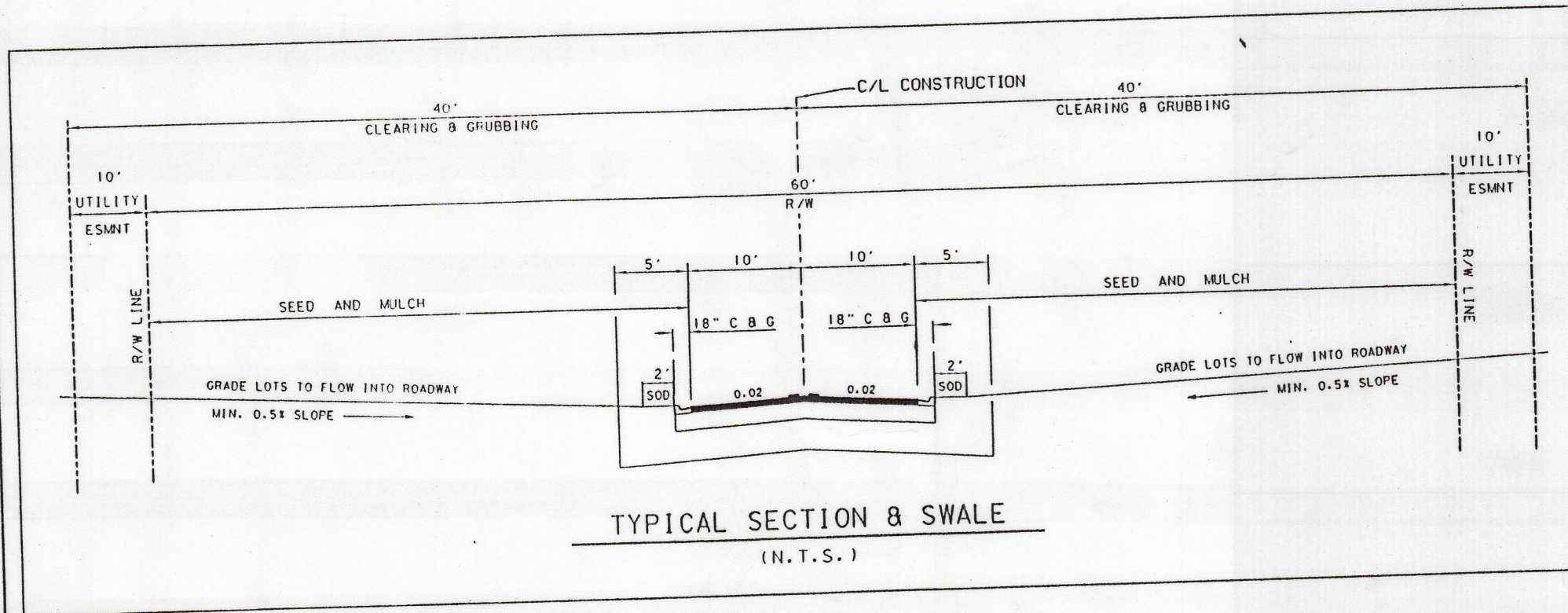


BAILEY BISHOP & LANE, INC.
 484 SW COMMERCE DRIVE, SUITE 130
 P. O. BOX 3717
 LAKE CITY, FL 32056-3717
 PH. (386) 752-5640 FAX (386) 755-7771
 Eng. Lic. 7362 Survey Lic. LB-0006885
 BBL Job No. 030313KEN

CYPRESS POINTE, UNIT 1
 IN
 SECTION 28, TOWNSHIP 2 SOUTH, RANGE 22 EAST
 CITY OF MACCLENNY,
 BAKER COUNTY, FLORIDA



CERTIFIED A TRUE, COMPLETE, AND CORRECT COPY
 OF THE ORIGINAL RECORDS OF THE CLERK OF THE CIRCUIT COURT
 BY **A. C. Fegan**
 DEPUTY CLERK
 CLERK OF CIRCUIT COURT
 BAKER COUNTY, FLORIDA

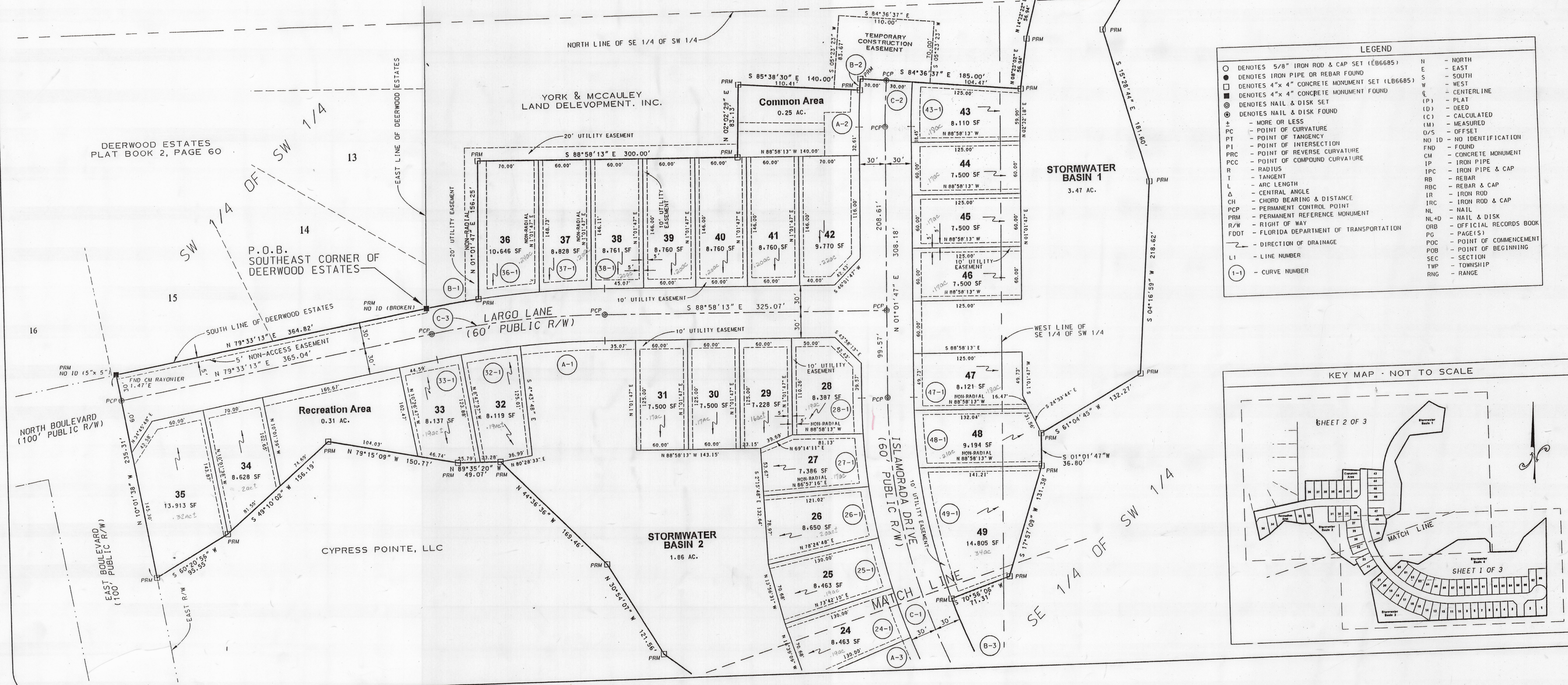
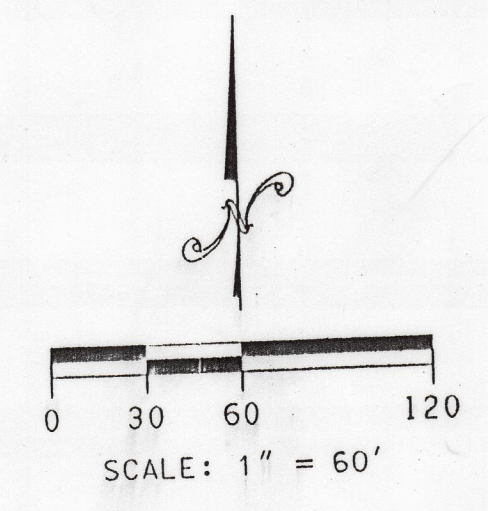


DEVELOPER:
 CYPRESS POINTE OF MACCLENNY, LLC -
 A FLORIDA LIMITED LIABILITY COMPANY
 C/O DONNA MOUNTAIN
 4501 BEVERLY AVENUE
 JACKSONVILLE, FL 32210
 (904) 493-2706

SURVEYOR:
 BRIAN SCOTT DANIEL
 484 SW COMMERCE DRIVE, SUITE 135
 LAKE CITY, FL 32025
 (386) 752-5640
 REG. NO. 6449

ENGINEER:
 ANN M. NEWLAND
 484 SW COMMERCE DRIVE, SUITE 135
 LAKE CITY, FL 32025
 (386) 752-5640
 REG. NO. 59918

CURVE NO.	RADIUS	DELTA	ARC LENGTH	CHORD BEARING	CHORD DIST.
24-1	730.00'	4°42'38"	60.02'	S 18°39'09" E	60.00'
25-1	730.00'	4°42'38"	60.02'	S 13°56'31" E	60.00'
26-1	730.00'	4°42'38"	60.02'	S 9°13'53" E	60.00'
27-1	730.00'	4°42'38"	60.02'	S 0°34'04" E	40.71'
28-1	730.00'	4°04'08"	68.89'	N 83°14'08" E	68.88'
32-1	910.00'	1°38'50"	27.89'	N 80°22'38" E	27.89'
33-1	910.00'	3°11'43"	40.71'	S 4°31'15" E	70.40'
36-1	1,030.00'	3°55'01"	70.42'	S 88°31'43" W	60.06'
37-1	1,030.00'	3°20'29"	14.93'	N 89°23'08" W	14.93'
38-1	1,030.00'	4°21'35"	50.98'	N 3°12'35" E	50.97'
43-1	610.00'	0°49'49"	60.07'	S 84°53'58" W	70.40'
41-1	610.00'	1°16'01"	14.82'	N 3°01'57" W	65.35'
48-1	610.00'	5°35'21"	65.38'	N 12°26'47" W	154.45'
49-1	610.00'	13°14'14"	91.51'	N 88°09'00" E	91.47'
A-1	910.00'	3°19'42"	42.41'	S 2°41'38" E	42.40'
A-2	730.00'	3°08'24"	40.01'	S 22°34'40" E	40.00'
A-3	730.00'	3°23'14"	60.89'	S 81°14'51" W	60.89'
B-1	1,030.00'	3°23'14"	60.89'	N 4°52'26" E	13.14'
B-2	730.00'	1°01'53"	13.14'	N 30°21'49" W	262.54'
B-3	610.00'	91°18'24"	1,118.52'	N 44°37'25" W	1,001.17'
C-1	700.00'	91°18'24"	53.27'	N 3°12'35" E	53.25'
C-2	700.00'	4°21'35"	200.30'	N 85°11'30" E	199.96'
C-3	1,000.00'	11°28'34"	200.30'	N 85°11'30" E	199.96'



LEGEND	
○	DENOTES 5/8" IRON ROD & CAP SET (LB6685)
●	DENOTES IRON PIPE OR REBAR FOUND
□	DENOTES 4" x 4" CONCRETE MONUMENT SET (LB6685)
■	DENOTES 4" x 4" CONCRETE MONUMENT FOUND
⊙	DENOTES NAIL & DISK SET
⊚	DENOTES NAIL & DISK FOUND
±	MORE OR LESS
PC	POINT OF CURVATURE
PT	POINT OF TANGENCY
PI	POINT OF INTERSECTION
PRC	POINT OF REVERSE CURVATURE
R	RADIUS
T	TANGENT
L	ARC LENGTH
Δ	CENTRAL ANGLE
CH	CHORD BEARING & DISTANCE
PCP	PERMANENT CONTROL POINT
PRM	PERMANENT REFERENCE MONUMENT
R/W	RIGHT OF WAY
FDOT	FLORIDA DEPARTMENT OF TRANSPORTATION
→	DIRECTION OF DRAINAGE
LI	LINE NUMBER
(1-1)	CURVE NUMBER
N	NORTH
E	EAST
S	SOUTH
W	WEST
CL	CENTERLINE
(P)	PLAT
(D)	DEED
(C)	CALCULATED
(M)	MEASURED
O/S	OFFSET
NO ID	NO IDENTIFICATION
FND	FOUND
CM	CONCRETE MONUMENT
IP	IRON PIPE
IPC	IRON PIPE & CAP
RB	REBAR
RBC	REBAR & CAP
IR	IRON ROD
IRC	IRON ROD & CAP
NL	NAIL
NLD	NAIL & DISK
ORB	OFFICIAL RECORDS BOOK
PG	PAGE(S)
POC	POINT OF COMMENCEMENT
SEC	SECTION
POB	POINT OF BEGINNING
TWP	TOWNSHIP
RNG	RANGE

