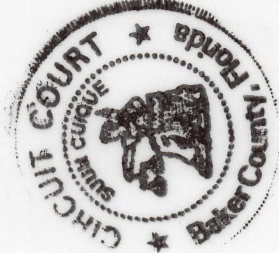
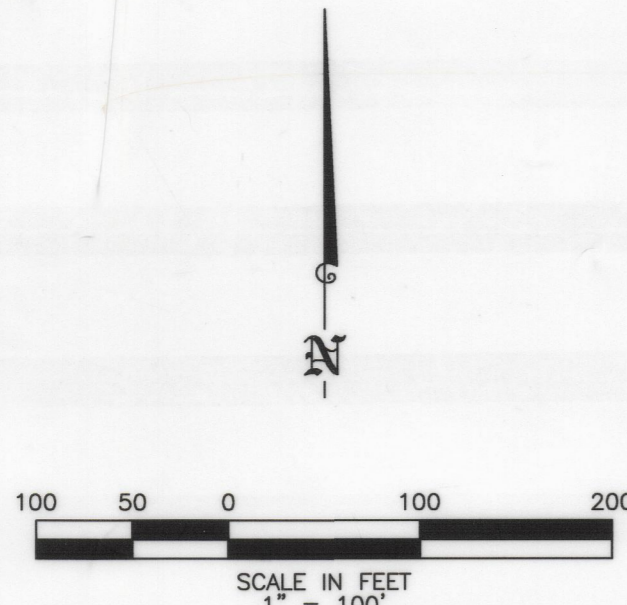


# SANDS POINTE

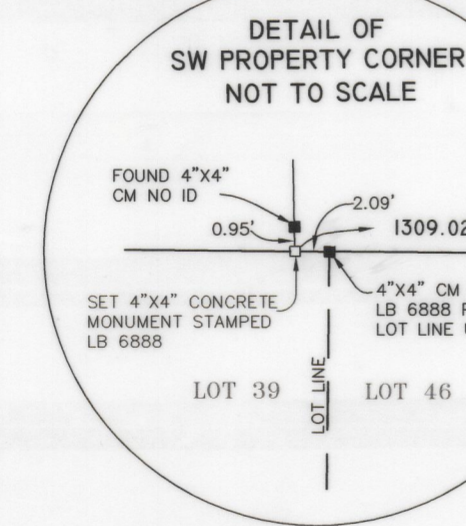
PART OF THE SOUTHEAST 1/4 AND PART OF THE SOUTHWEST 1/4 OF SECTION 19, AND TOWNSHIP 2 SOUTH; RANGE 22 EAST BAKER COUNTY, CITY OF MACCLENNY, FLORIDA.



CERTIFIED A TRUE, CORRECT AND CORRECT COPY  
BY ALERAN SURVEYOR

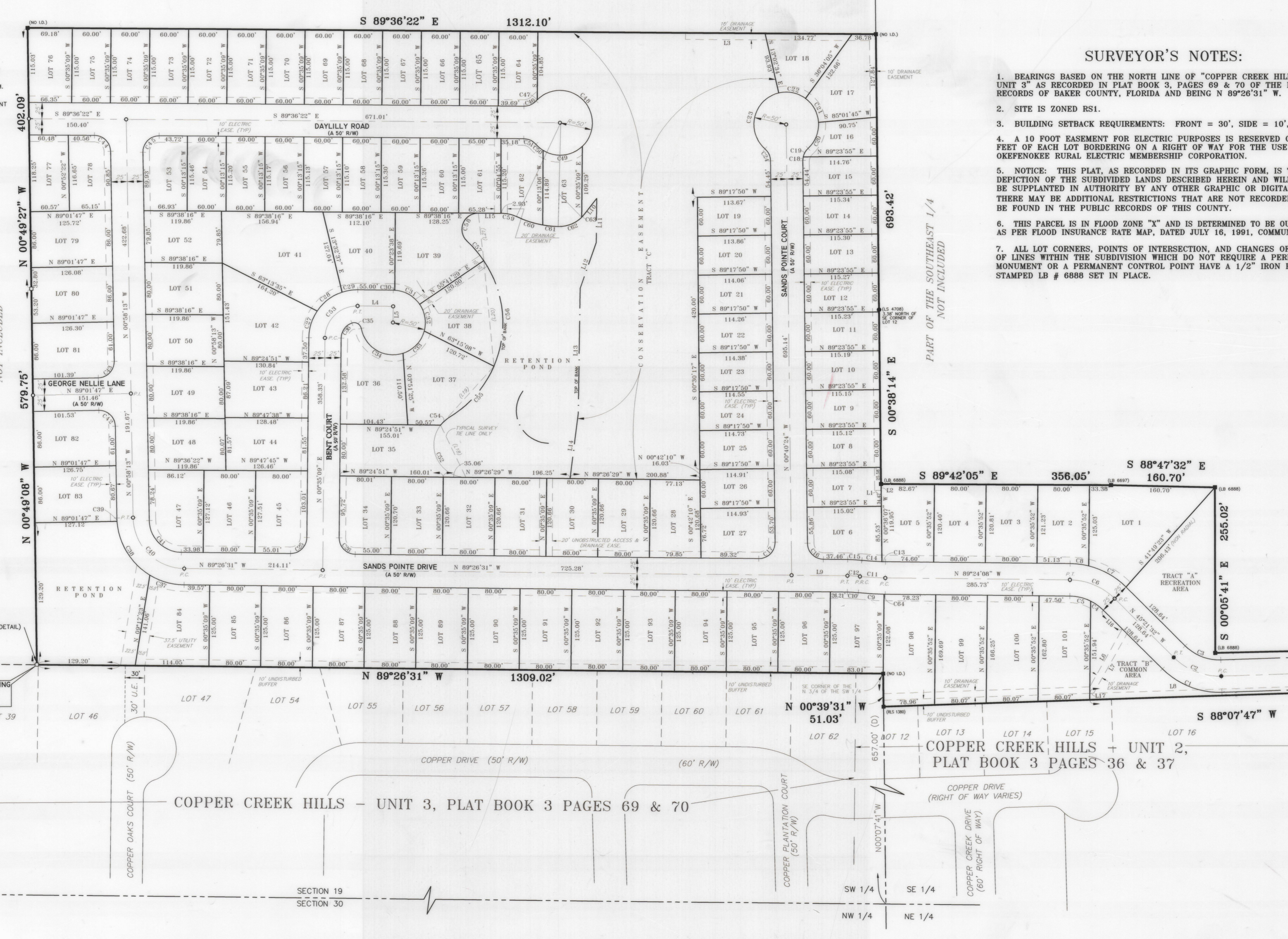
### LEGEND AND ABBREVIATIONS:

- DENOTES CORNER FOUND 4" x 4" CONCRETE MONUMENT IN PLACE IDENTIFIED ON PLAT.
- DENOTES 4" x 4" CONCRETE MONUMENT, STAMPED P.R.M. LB # 6888 SET WHERE SHOWN.
- DENOTES PERMANENT CONTROL NAIL & BRASS DISK POINT STAMPED P.C.P. LB # 6888 SET WHERE SHOWN.
- DENOTES FOUND 5/8" IRON ROD
- R/W DENOTES RIGHT OF WAY
- NR DENOTES NON RADIAL
- R DENOTES RADIAL
- P.I. DENOTES POINT OF INTERSECTION
- P.C. DENOTES POINT OF CURVATURE
- P.R.C. DENOTES POINT OF REVERSE CURVATURE
- P.T. DENOTES POINT OF TANGENCY
- R/W DENOTES RIGHT OF WAY
- EASE DENOTES EASEMENT
- (TYP) DENOTES TYPICAL
- LB DENOTES LICENSED BUSINESS
- LS DENOTES REGISTERED LAND SURVEYOR
- (L19) DENOTES CLOSURE LINE ONLY
- UE DENOTES UTILITY EASEMENT



POINT OF BEGINNING DESCRIPTION OF TOTAL PROPERTY

POINT OF COMMENCEMENT SW CORNER SEC. 19



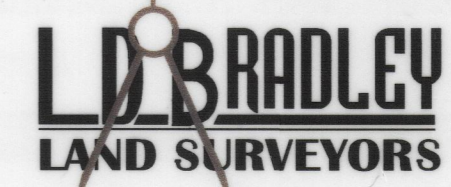
### SURVEYOR'S NOTES:

- BEARINGS BASED ON THE NORTH LINE OF "COPPER CREEK HILLS - UNIT 3" AS RECORDED IN PLAT BOOK 3, PAGES 69 & 70 OF THE PUBLIC RECORDS OF BAKER COUNTY, FLORIDA AND BEING N 89°26'31" W.
- SITE IS ZONED RSI.
- BUILDING SETBACK REQUIREMENTS: FRONT = 30', SIDE = 10', REAR = 15'.
- A 10 FOOT EASEMENT FOR ELECTRIC PURPOSES IS RESERVED OVER THAT 10 FEET OF EACH LOT BORDERING ON A RIGHT OF WAY FOR THE USE OF THE OKFENEKEE RURAL ELECTRIC MEMBERSHIP CORPORATION.
- NOTICE: THIS PLAT, AS RECORDED IN ITS GRAPHIC FORM, IS THE OFFICIAL DEPICTION OF THE SUBDIVIDED LANDS DESCRIBED HEREIN AND WILL IN NO CIRCUMSTANCES BE SUPPLANTED IN AUTHORITY BY ANY OTHER GRAPHIC OR DIGITAL FORM OF THE PLAT. THERE MAY BE ADDITIONAL RESTRICTIONS THAT ARE NOT RECORDED ON THIS PLAT THAT MAY BE FOUND IN THE PUBLIC RECORDS OF THIS COUNTY.
- THIS PARCEL IS IN FLOOD ZONE "X" AND IS DETERMINED TO BE OUTSIDE THE 500 YEAR FLOOD PLAN AS PER FLOOD INSURANCE RATE MAP, DATED JULY 16, 1991, COMMUNITY FANREL NO. 120419 01658.
- ALL LOT CORNERS, POINTS OF INTERSECTION, AND CHANGES OF DIRECTION OF LINES WITHIN THE SUBDIVISION WHICH DO NOT REQUIRE A PERMANENT REFERENCE MONUMENT OR A PERMANENT CONTROL POINT HAVE A 1/2" IRON PIPE WITH CAP STAMPED LB # 6888 SET IN PLACE.

CURVE	BELTA ANGLE	RADIUS	LENGTH	TANGENT	CHORD	CHORD DIRECTION
C1	40°24'41"	150.00	103.71	83.71	83.71	N89°26'31" W
C2	40°30'41"	100.00	81.18	42.99	78.97	S89°36'53" E
C3	40°30'41"	75.00	60.88	32.23	59.23	S89°36'53" E
C4	40°24'41"	75.00	54.84	12.12	53.88	N89°26'31" W
C5	50°46'40"	75.00	53.65	17.89	53.33	N78°34'44" W
C6	41°00'30"	100.00	76.87	40.43	74.99	N89°26'31" W
C7	40°24'41"	125.00	86.30	31.30	66.13	N89°26'31" W
C8	18°21'34"	125.00	29.14	14.84	30.97	N89°26'31" W
C9	18°21'34"	125.00	29.14	14.84	30.97	N89°26'31" W
C10	18°21'34"	125.00	29.14	14.84	30.97	N89°26'31" W
C11	18°21'34"	125.00	29.14	14.84	30.97	N89°26'31" W
C12	18°21'34"	125.00	29.14	14.84	30.97	N89°26'31" W
C13	18°21'34"	125.00	29.14	14.84	30.97	N89°26'31" W
C14	18°21'34"	125.00	29.14	14.84	30.97	N89°26'31" W
C15	18°21'34"	125.00	29.14	14.84	30.97	N89°26'31" W
C16	18°21'34"	125.00	29.14	14.84	30.97	N89°26'31" W
C17	18°21'34"	125.00	29.14	14.84	30.97	N89°26'31" W
C18	18°21'34"	125.00	29.14	14.84	30.97	N89°26'31" W
C19	18°21'34"	125.00	29.14	14.84	30.97	N89°26'31" W
C20	18°21'34"	125.00	29.14	14.84	30.97	N89°26'31" W
C21	18°21'34"	125.00	29.14	14.84	30.97	N89°26'31" W
C22	18°21'34"	125.00	29.14	14.84	30.97	N89°26'31" W
C23	18°21'34"	125.00	29.14	14.84	30.97	N89°26'31" W
C24	18°21'34"	125.00	29.14	14.84	30.97	N89°26'31" W
C25	18°21'34"	125.00	29.14	14.84	30.97	N89°26'31" W
C26	18°21'34"	125.00	29.14	14.84	30.97	N89°26'31" W
C27	18°21'34"	125.00	29.14	14.84	30.97	N89°26'31" W
C28	18°21'34"	125.00	29.14	14.84	30.97	N89°26'31" W
C29	18°21'34"	125.00	29.14	14.84	30.97	N89°26'31" W
C30	18°21'34"	125.00	29.14	14.84	30.97	N89°26'31" W
C31	18°21'34"	125.00	29.14	14.84	30.97	N89°26'31" W
C32	18°21'34"	125.00	29.14	14.84	30.97	N89°26'31" W
C33	18°21'34"	125.00	29.14	14.84	30.97	N89°26'31" W
C34	18°21'34"	125.00	29.14	14.84	30.97	N89°26'31" W
C35	18°21'34"	125.00	29.14	14.84	30.97	N89°26'31" W
C36	18°21'34"	125.00	29.14	14.84	30.97	N89°26'31" W
C37	18°21'34"	125.00	29.14	14.84	30.97	N89°26'31" W
C38	18°21'34"	125.00	29.14	14.84	30.97	N89°26'31" W
C39	18°21'34"	125.00	29.14	14.84	30.97	N89°26'31" W
C40	18°21'34"	125.00	29.14	14.84	30.97	N89°26'31" W
C41	18°21'34"	125.00	29.14	14.84	30.97	N89°26'31" W
C42	18°21'34"	125.00	29.14	14.84	30.97	N89°26'31" W
C43	18°21'34"	125.00	29.14	14.84	30.97	N89°26'31" W
C44	18°21'34"	125.00	29.14	14.84	30.97	N89°26'31" W
C45	18°21'34"	125.00	29.14	14.84	30.97	N89°26'31" W
C46	18°21'34"	125.00	29.14	14.84	30.97	N89°26'31" W
C47	18°21'34"	125.00	29.14	14.84	30.97	N89°26'31" W
C48	18°21'34"	125.00	29.14	14.84	30.97	N89°26'31" W
C49	18°21'34"	125.00	29.14	14.84	30.97	N89°26'31" W
C50	18°21'34"	125.00	29.14	14.84	30.97	N89°26'31" W
C51	18°21'34"	125.00	29.14	14.84	30.97	N89°26'31" W
C52	18°21'34"	125.00	29.14	14.84	30.97	N89°26'31" W
C53	18°21'34"	125.00	29.14	14.84	30.97	N89°26'31" W
C54	18°21'34"	125.00	29.14	14.84	30.97	N89°26'31" W
C55	18°21'34"	125.00	29.14	14.84	30.97	N89°26'31" W
C56	18°21'34"	125.00	29.14	14.84	30.97	N89°26'31" W
C57	18°21'34"	125.00	29.14	14.84	30.97	N89°26'31" W
C58	18°21'34"	125.00	29.14	14.84	30.97	N89°26'31" W
C59	18°21'34"	125.00	29.14	14.84	30.97	N89°26'31" W
C60	18°21'34"	125.00	29.14	14.84	30.97	N89°26'31" W
C61	18°21'34"	125.00	29.14	14.84	30.97	N89°26'31" W
C62	18°21'34"	125.00	29.14	14.84	30.97	N89°26'31" W
C63	18°21'34"	125.00	29.14	14.84	30.97	N89°26'31" W
C64	18°21'34"	125.00	29.14	14.84	30.97	N89°26'31" W

LINE	BEARING	LENGTH
1	N89°26'31" W	1309.02'
2	S89°36'53" E	9.97'
3	N89°26'31" W	125.28'
4	S89°26'31" W	53.00'
5	S89°36'53" E	35.00'
6	N89°26'31" W	102.34'
7	N89°26'31" W	105.35'
8	N89°26'31" W	349.89'
9	N89°26'31" W	86.49'
10	N89°26'31" W	39.81'
11	S89°36'53" E	67.95'
12	N89°26'31" W	105.35'
13	S89°36'53" E	193.03'
14	S89°36'53" E	101.29'
15	N89°26'31" W	37.99'
16	S89°36'53" E	41.50'
17	S89°36'53" E	9.89'
18	N89°26'31" W	89.46'
19	N89°26'31" W	122.85'
20	S89°36'53" E	164.02'
21	S89°36'53" E	53.47'

Surveyors Correction Affidavit has been Filed in Clerk of Courts Office on 07-20-2005. Recorded in Official Records - Instrument # 2005-6439



5773 NORMANDY BOULEVARD, JACKSONVILLE, FLORIDA 32205  
PHONE (904) 786-6400 FAX (904) 786-1479  
LICENSED BUSINESS NO. 6888