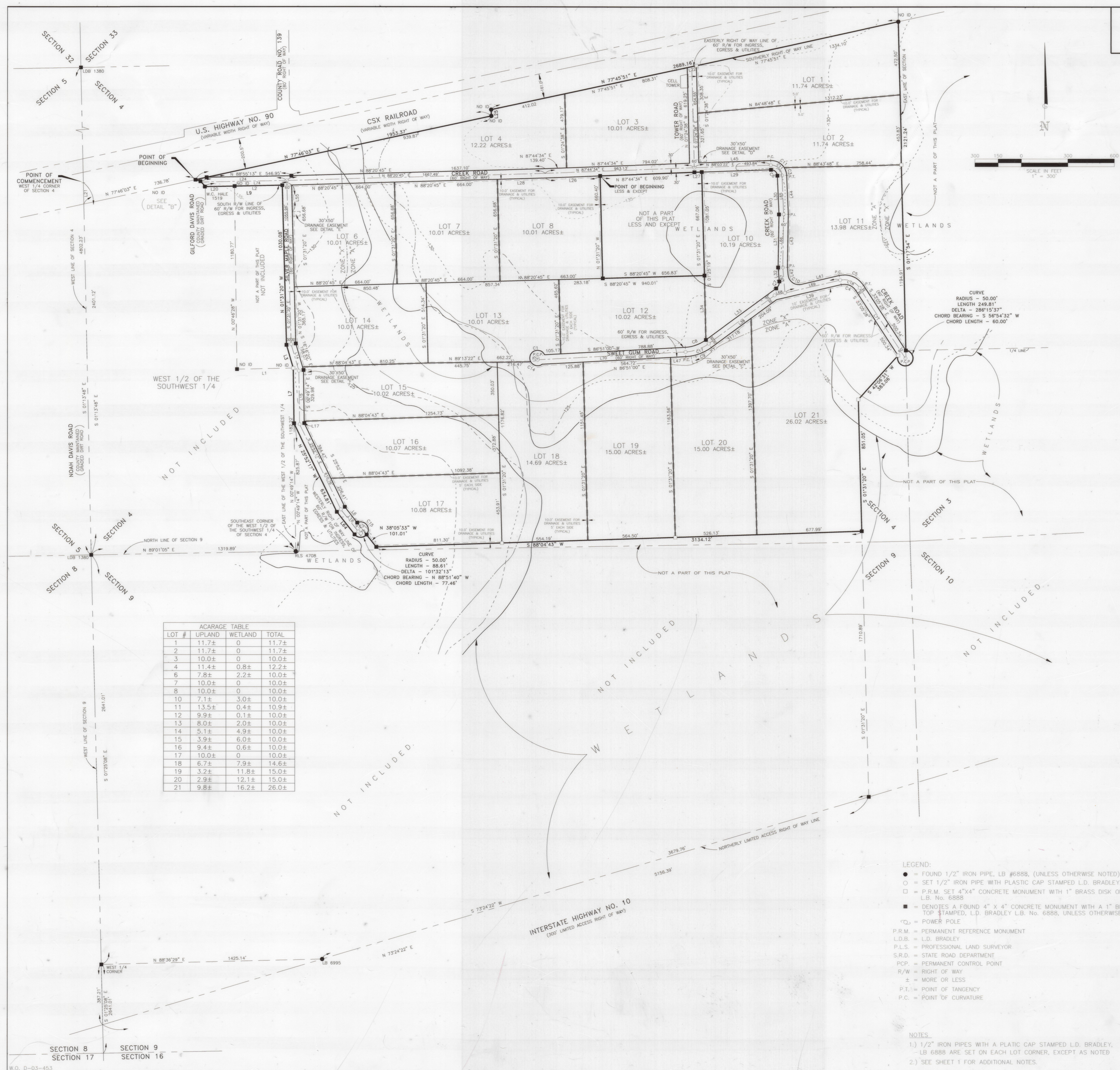


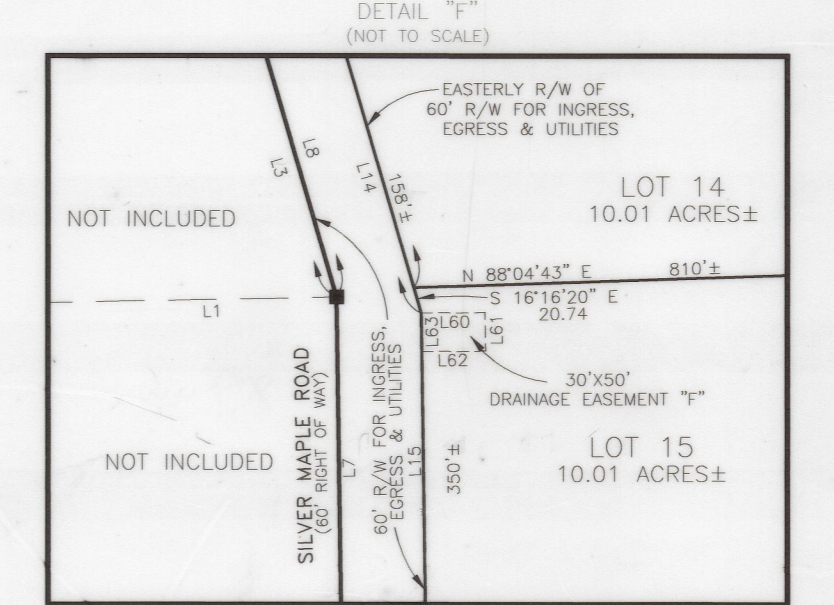
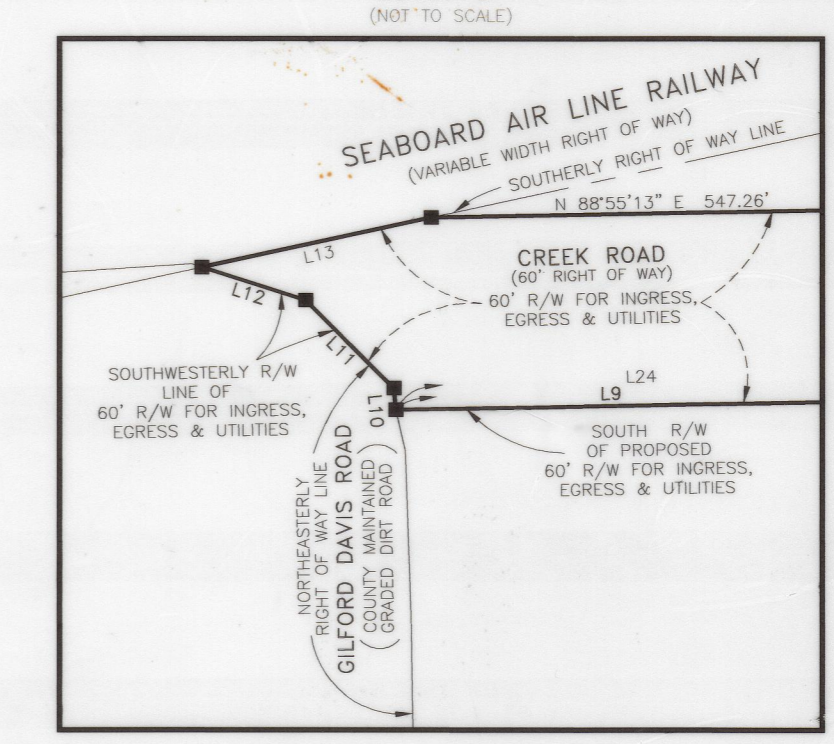
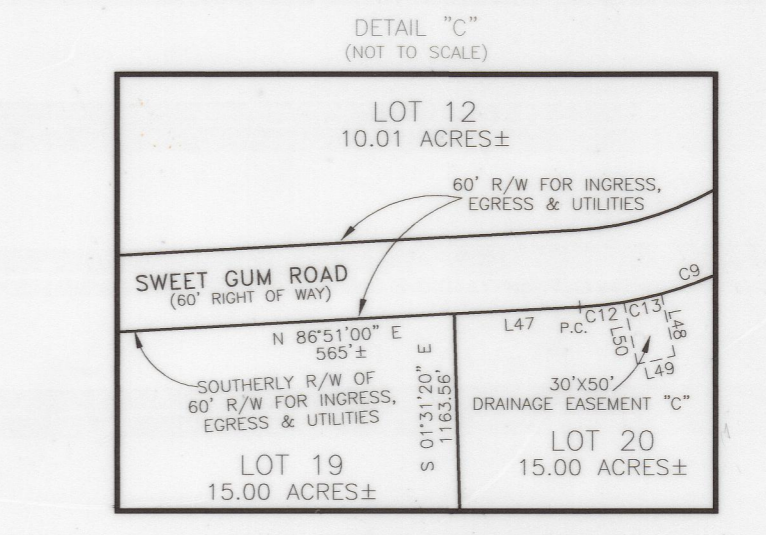
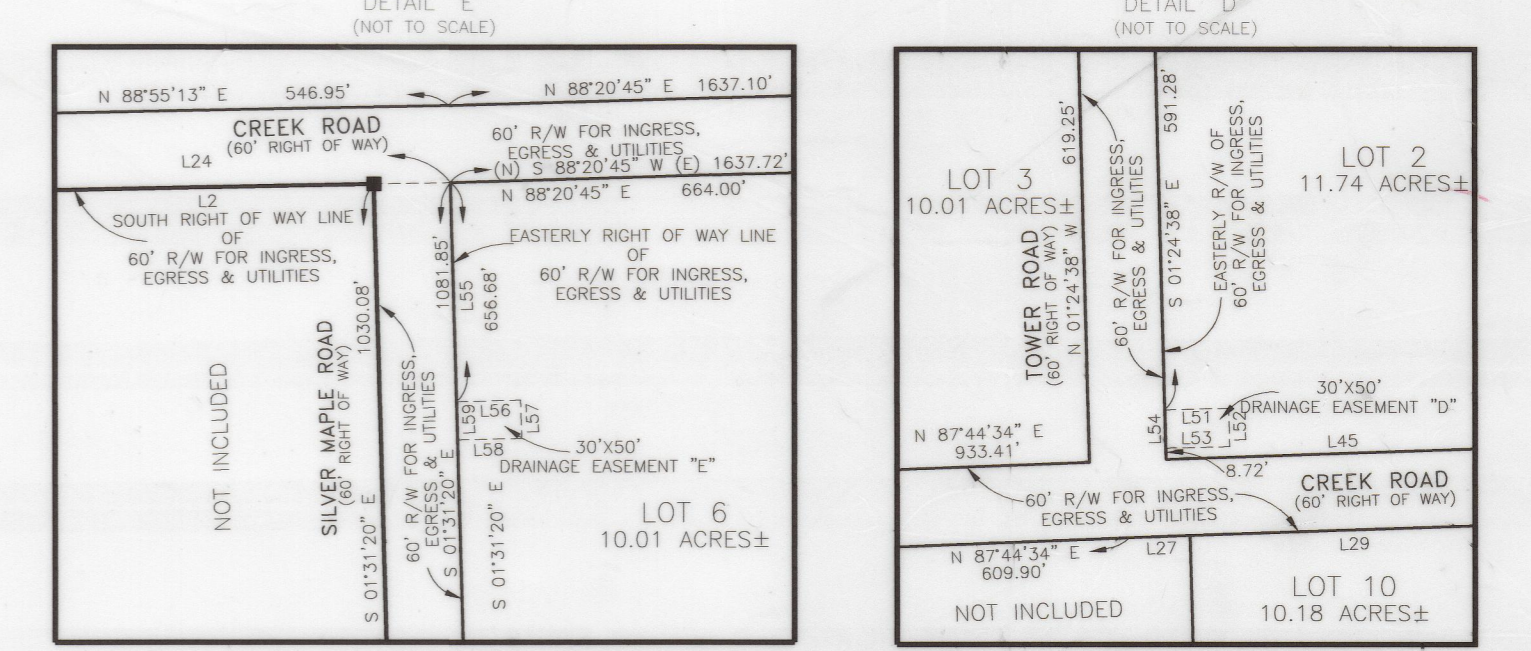
# "LANCASTER GLEN"

A SUBDIVISION OF  
A PART OF SECTIONS 3 & 4  
TOWNSHIP 3 SOUTH, RANGE 21 EAST, BAKER COUNTY, FLORIDA.



**ACRAGE TABLE**

LOT #	UPLAND	WETLAND	TOTAL
1	11.7±	0	11.7±
2	11.7±	0	11.7±
3	10.0±	0	10.0±
4	11.4±	0.8±	12.2±
6	7.8±	2.2±	10.0±
7	10.0±	0	10.0±
8	10.0±	0	10.0±
10	7.1±	3.0±	10.0±
11	13.5±	0.4±	10.9±
12	9.9±	0.1±	10.0±
13	8.0±	2.0±	10.0±
14	5.1±	4.9±	10.0±
15	3.9±	6.0±	10.0±
16	9.4±	0.6±	10.0±
17	10.0±	0	10.0±
18	6.7±	7.9±	14.6±
19	3.2±	11.8±	15.0±
20	2.9±	12.1±	15.0±
21	9.8±	16.2±	26.0±



**LINE TABLE**

LINE	BEARING	LENGTH
L1	N 88°52'54" E	363.04'
L2	N 88°55'13" E	302.84'
L3	N 88°52'54" E	158.82'
L4	S 88°01'05" W	18.01'
L5	S 88°52'54" E	20.00'
L6	S 88°55'13" E	129.68'
L7	N 88°52'54" E	356.35'
L8	S 88°52'54" E	155.87'
L9	S 88°55'13" E	499.85'
L10	S 88°52'54" E	8.82'
L11	S 88°52'54" E	38.88'
L12	S 88°52'54" E	33.80'
L13	S 88°55'13" E	23.82'
L14	S 88°52'54" E	178.82'
L15	S 88°55'13" E	344.88'
L16	S 88°52'54" E	181.88'
L17	S 88°55'13" E	12.30'
L18	S 88°52'54" E	36.01'
L19	S 88°52'54" E	45.88'
L20	S 88°55'13" E	191.82'
L21	S 88°52'54" E	137.40'
L22	S 88°55'13" E	61.89'
L23	S 88°52'54" E	29.64'
L24	S 88°55'13" E	552.48'
L25	S 88°52'54" E	45.88'
L26	S 88°55'13" E	353.31'
L27	S 88°52'54" E	45.88'
L28	S 88°55'13" E	309.72'
L29	S 88°52'54" E	446.78'
L30	S 88°55'13" E	249.37'
L31	S 88°52'54" E	342.85'
L32	S 88°55'13" E	499.85'
L33	S 88°52'54" E	581.88'
L34	S 88°55'13" E	414.60'
L35	S 88°52'54" E	426.36'
L36	S 88°55'13" E	426.36'
L37	S 88°52'54" E	250.46'
L38	S 88°55'13" E	47.25'
L39	S 88°52'54" E	341.67'
L40	S 88°55'13" E	493.78'
L41	S 88°52'54" E	98.20'
L42	S 88°55'13" E	50.00'
L43	S 88°52'54" E	30.00'
L44	S 88°55'13" E	30.00'
L45	S 88°52'54" E	30.00'
L46	S 88°55'13" E	30.00'
L47	S 88°52'54" E	30.00'
L48	S 88°55'13" E	30.00'
L49	S 88°52'54" E	30.00'
L50	S 88°55'13" E	30.00'
L51	S 88°52'54" E	30.00'
L52	S 88°55'13" E	30.00'
L53	S 88°52'54" E	30.00'
L54	S 88°55'13" E	30.00'
L55	S 88°52'54" E	171.24'
L56	S 88°55'13" E	30.00'
L57	S 88°52'54" E	30.00'
L58	S 88°55'13" E	30.00'
L59	S 88°52'54" E	30.00'
L60	S 88°55'13" E	30.00'
L61	S 88°52'54" E	30.00'
L62	S 88°55'13" E	30.00'
L63	S 88°52'54" E	30.00'
L64	S 88°55'13" E	156.18'
L65	S 88°52'54" E	249.37'
L66	S 88°55'13" E	342.85'
L67	S 88°52'54" E	156.18'
L68	S 88°55'13" E	68.62'
L69	S 88°52'54" E	365.84'
L70	S 88°55'13" E	955.22'
L71	S 88°52'54" E	540.14'
L72	S 88°55'13" E	20.00'
L73	S 88°52'54" E	158.63'
L74	S 88°55'13" E	559.88'
L75	S 88°52'54" E	11.80'

**LEGEND:**

- = FOUND 1/2" IRON PIPE, LB #6888, (UNLESS OTHERWISE NOTED)
- = SET 1/2" IRON PIPE WITH PLASTIC CAP STAMPED L.D. BRADLEY, L.B. No. 6888
- = P.R.M. SET 4"x4" CONCRETE MONUMENT WITH 1" BRASS DISK ON TOP, STAMPED L.B. No. 6888
- = DENOTES A FOUND 4" x 4" CONCRETE MONUMENT WITH A 1" BRASS DISK ON TOP STAMPED, L.D. BRADLEY L.B. No. 6888, UNLESS OTHERWISE NOTED
- ⊙ = POWER POLE
- P.R.M. = PERMANENT REFERENCE MONUMENT
- L.D.B. = L.D. BRADLEY
- P.L.S. = PROFESSIONAL LAND SURVEYOR
- S.R.D. = STATE ROAD DEPARTMENT
- PCP. = PERMANENT CONTROL POINT
- R/W = RIGHT OF WAY
- ± = MORE OR LESS
- P.T. = POINT OF TANGENCY
- P.C. = POINT OF CURVATURE

**NOTES:**

- 1/2" IRON PIPES WITH A PLASTIC CAP STAMPED L.D. BRADLEY, LB #6888 ARE SET ON EACH LOT CORNER, EXCEPT AS NOTED
- SEE SHEET 1 FOR ADDITIONAL NOTES.

PREPARED BY:

**L.D. BRADLEY**  
LAND SURVEYORS

5773 NORMANDY BOULEVARD,  
JACKSONVILLE, FLORIDA 32205  
PHONE (904) 786-6400 FAX (904) 786-1479  
LICENSED BUSINESS No. 6888

W.O. No.: 04-590 DATE: 9/30/97 DRAFTED BY: DHB  
CHECKED BY: AJJ CAD FILE: 04590.DWG FB 467 PG 10