

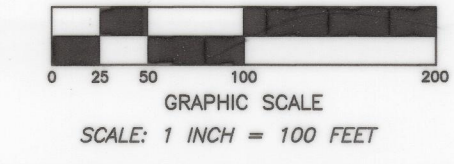
"FARMS AT GLEN PLANTATION"

IN
SECTION 11 AND 14, TOWNSHIP 2 SOUTH,
RANGE 21 EAST,
BAKER COUNTY, FLORIDA

ALL PLATTED UTILITY EASEMENTS SHALL PROVIDE THAT SUCH EASEMENTS SHALL ALSO BE FOR THE CONSTRUCTION, INSTALLATION, MAINTENANCE, AND OPERATION OF CABLE TELEVISION SERVICES; PROVIDED, HOWEVER, NO SUCH CONSTRUCTION, INSTALLATION, MAINTENANCE, AND OPERATION OF CABLE TELEVISION SERVICES SHALL INTERFERE WITH THE FACILITIES AND SERVICES OF ELECTRIC, TELEPHONE, GAS, OR OTHER PUBLIC UTILITY. IN THE EVENT THAT A CABLE TELEVISION COMPANY DAMAGES THE FACILITIES OF A PUBLIC UTILITY, IT SHALL BE SOLELY RESPONSIBLE FOR THE DAMAGES.

"NOTICE: THIS PLAT, AS RECORDED IN ITS GRAPHIC FORM, IS THE OFFICIAL DEPICTION OF THE SUBDIVIDED LANDS DESCRIBED HEREIN AND WILL IN NO CIRCUMSTANCES BE SUPPLANTED IN AUTHORITY BY ANY OTHER GRAPHIC OR DIGITAL FORM OF THE PLAT. THERE MAY BE ADDITIONAL RESTRICTIONS THAT ARE NOT RECORDED ON THIS PLAT THAT MAY BE FOUND IN THE PUBLIC RECORDS OF THIS COUNTY."

EASEMENTS OF TWENTY (20) FEET, FIFTEEN (15) FEET AND SEVEN AND ONE HALF FEET (7.5) IN WIDTH AS SHOWN HEREON ARE HEREBY CREATED AND PROVIDED FOR THE PURPOSE OF ACCOMMODATING OVERHEAD, SURFACE, AND UNDERGROUND UTILITIES AND DRAINAGE. WHERE AN AREA GREATER THAN ONE LOT IS USED AS A BUILDING SITE, ONLY THE OUTSIDE BOUNDARY OF SAID SITE SHALL BE SUBJECT TO THE LOT LINE EASEMENT.

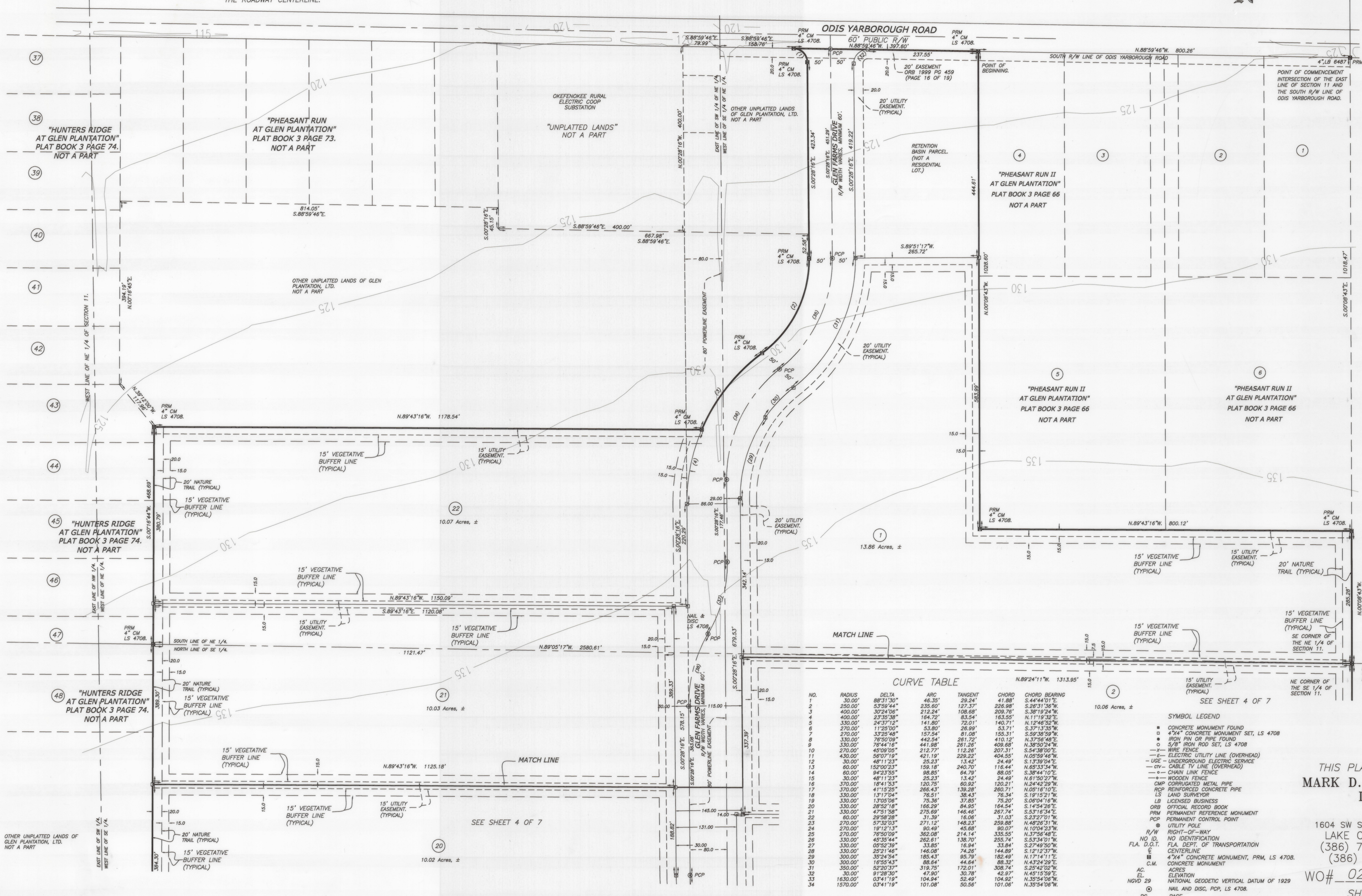


MINIMUM FINISHED FLOOR ELEVATION SHALL BE THE HIGHER OF: 8" ABOVE THE HIGHEST ADJACENT GRADE OF 1 FOOT ABOVE THE ROADWAY CENTERLINE.

CENTERLINE CURVE TABLE

NO.	RADIUS	DELTA	ARC	TANGENT	CHORD	CHORD BEARING
35	300.00'	52°09'24"	273.09'	146.83'	263.76'	S.25°36'26"W.
36	300.00'	31°03'20"	162.81'	83.35'	160.62'	S.15°03'24"W.
37	300.00'	31°03'20"	162.81'	83.35'	160.62'	N.15°03'24"W.
38	300.00'	28°09'21"	147.42'	75.23'	145.95'	N.14°32'57"W.
39	300.00'	28°09'21"	147.42'	75.23'	145.95'	N.14°32'57"W.
40	300.00'	28°09'21"	147.42'	75.23'	145.95'	S.14°32'57"W.
41	300.00'	76°50'09"	402.31'	237.93'	372.84'	S.37°36'46"W.
42	300.00'	76°50'09"	402.31'	237.93'	372.84'	N.37°36'46"W.
43	300.00'	76°44'16"	401.80'	237.51'	372.43'	N.38°50'24"W.
44	300.00'	76°44'16"	401.80'	237.51'	372.43'	S.38°50'24"W.
45	300.00'	26°22'09"	138.07'	70.28'	136.85'	S.12°42'48"W.
46	400.00'	59°57'19"	418.57'	230.73'	599.73'	N.40°04'46"W.
47	1600.00'	03°41'19"	103.01'	51.52'	102.99'	N.35°54'08"W.

CONTOURS CREATED FROM FIELD SURVEY AND ARE BASED ON NGVD 29 DATUM.



LINE TABLE

Line	Bearing	Distance
L1	N.88°44'52"W.	237.88'
L2	N.71°12'09"W.	207.20'
L3	S.78°51'00"W.	84.48'
L4	N.82°02'42"W.	65.69'
L5	S.83°32'36"W.	54.08'
L6	N.72°01'11"W.	115.48'
L7	N.57°03'44"W.	61.02'
L8	N.83°46'10"W.	53.97'
L9	N.43°47'15"W.	64.69'
L10	N.78°27'57"W.	35.51'
L11	N.82°07'26"W.	79.45'
L12	N.89°55'51"W.	60.01'
L13	S.74°57'20"W.	51.55'
L14	N.85°00'32"W.	49.02'
L15	N.89°50'17"W.	62.05'
L16	S.78°08'06"W.	73.18'
L17	S.87°12'41"W.	92.87'
L18	N.88°10'50"W.	267.70'
L19	N.13°02'07"E.	150.24'
L20	N.88°41'37"E.	145.73'
L21	S.88°08'08"E.	174.55'
L22	N.87°03'46"E.	87.46'
L23	S.89°40'46"E.	135.47'
L24	S.63°02'04"E.	79.69'
L25	S.78°59'40"E.	134.98'
L26	N.72°52'44"E.	46.74'
L27	S.87°42'13"E.	91.88'
L28	S.44°02'31"E.	43.37'
L29	S.86°14'33"E.	102.74'
L30	S.44°02'31"E.	43.37'
L31	S.44°02'31"E.	43.37'
L32	S.34°27'59"E.	134.58'
L33	S.00°08'43"E.	154.04'
L34	S.00°08'43"E.	154.04'
L35	N.00°16'44"E.	51.82'
L36	N.76°30'01"W.	65.40'
L37	N.85°00'32"W.	62.05'
L38	N.87°01'00"W.	77.95'
L39	S.89°50'17"W.	62.05'
L40	S.18°49'02"W.	80.80'
L41	S.11°13'14"E.	75.25'
L42	S.89°43'32"E.	213.85'
L43	S.52°56'27"E.	80.54'
L44	S.77°42'45"E.	65.10'
L45	N.00°16'44"E.	289.43'
L46	N.62°03'38"W.	139.80'
L47	N.03°29'30"W.	46.58'
L48	N.16°50'02"E.	47.68'
L49	N.25°17'10"W.	33.32'
L50	N.67°04'22"W.	34.07'
L51	N.82°11'11"W.	45.62'
L52	N.62°37'08"W.	65.11'
L53	N.53°58'27"W.	35.04'
L54	N.67°42'12"W.	57.53'
L55	N.10°01'50"W.	108.36'
L56	N.00°02'18"E.	44.15'
L57	N.08°57'00"E.	51.22'
L58	N.26°39'20"W.	60.70'
L59	N.82°02'02"W.	50.71'
L60	N.41°37'50"E.	54.64'
L61	N.20°15'30"E.	77.88'
L62	N.09°24'47"W.	78.82'
L63	N.18°50'20"W.	94.55'
L64	N.43°02'27"W.	58.66'
L65	N.57°10'57"W.	39.07'
L66	S.00°16'44"E.	221.03'
L67	N.57°10'57"W.	39.07'
L68	N.22°58'22"W.	57.08'
L69	N.51°22'42"W.	59.19'
L70	N.67°11'41"W.	63.05'
L71	N.00°06'10"E.	32.40'
L72	N.17°35'46"W.	72.23'
L73	N.82°11'32"W.	63.59'
L74	N.24°12'30"W.	93.58'
L75	N.82°11'32"W.	63.59'
L76	N.00°37'25"W.	69.97'
L77	N.45°49'25"W.	128.85'
L78	N.82°02'02"W.	50.71'
L79	N.23°04'42"W.	91.40'
L80	N.18°42'24"W.	106.53'
L81	N.28°28'48"W.	221.13'
L82	N.44°21'36"W.	274.43'
L83	N.87°30'51"W.	122.38'
L84	S.81°08'43"W.	343.12'
L85	S.65°22'50"W.	132.80'
L86	S.71°17'34"W.	255.86'
L87	S.17°55'26"W.	38.83'
L88	S.34°50'19"E.	112.51'
L89	S.84°23'52"E.	118.32'
L90	S.78°49'33"E.	67.58'
L91	N.88°51'51"E.	130.71'
L92	S.63°57'02"E.	151.24'
L93	S.44°37'36"E.	194.94'
L94	S.30°03'14"W.	515.69'
L95	S.08°35'40"W.	36.59'
L96	S.16°37'13"W.	34.19'
L97	S.08°35'40"W.	36.59'
L98	N.77°41'49"W.	34.64'
L99	N.69°25'35"W.	28.84'
L100	N.30°03'14"E.	115.74'

CURVE TABLE

NO.	RADIUS	DELTA	ARC	TANGENT	CHORD	CHORD BEARING
1	30.00'	88°31'30"	46.35'	29.24'	41.88'	S.44°44'01"E.
2	250.00'	8°35'44"	235.60'	123.75'	228.87'	N.29°31'39"W.
3	400.00'	3°02'06"	212.24'	108.68'	209.76'	S.39°19'24"W.
4	400.00'	3°02'06"	212.24'	108.68'	209.76'	N.11°19'32"E.
5	330.00'	4°37'12"	141.80'	72.01'	140.71'	N.12°46'52"W.
6	270.00'	11°25'00"	53.80'	26.99'	53.71'	S.37°13'35"W.
7	270.00'	11°25'00"	53.80'	26.99'	53.71'	N.37°13'35"E.
8	330.00'	76°50'09"	442.54'	261.72'	409.68'	N.37°56'48"E.
9	330.00'	76°50'09"	442.54'	261.72'	409.68'	N.39°50'24"W.
10	330.00'	76°50'09"	442.54'	261.72'	409.68'	S.37°56'48"W.
11	430.00'	56°07'19"	421.19'	229.25'	404.55'	N.05°59'46"W.
12	30.00'	48°11'23"	25.23'	13.42'	24.46'	S.13°39'04"E.
13	60.00'	15°00'23"	158.18'	84.70'	116.44'	N.65°03'34"W.
14	60.00'	15°00'23"	158.18'	84.70'	116.44'	S.39°44'10"E.
15	30.00'	48°11'23"	25.23'	13.42'	24.46'	N.61°50'27"W.
16	370.00'	16°41'53"	120.75'	60.92'	120.21'	N.24°42'29"W.
17	370.00'	41°15'25"	266.43'	139.28'	260.71'	N.05°16'10"E.
18	330.00'	13°17'04"	76.51'	38.43'	76.34'	S.19°15'21"W.
19	330.00'	13°05'06"	75.36'	37.85'	75.20'	S.06°04'16"W.
20	330.00'	28°52'18"	166.29'	84.90'	164.54'	S.14°54'26"E.
21	330.00'	47°51'58"	275.69'	146.46'	267.74'	S.53°16'34"E.
22	60.00'	29°58'28"	31.39'	16.06'	31.03'	S.23°27'01"W.
23	270.00'	57°32'03"	271.12'	148.23'	259.89'	N.48°28'31"W.
24	270.00'	57°32'03"	271.12'	148.23'	259.89'	N.10°04'23"W.
25	270.00'	76°50'09"	362.08'	214.14'	335.55'	N.37°56'48"E.
26	330.00'	45°35'44"	262.61'	138.70'	255.31'	S.53°34'01"W.
27	330.00'	05°52'39"	33.85'	16.94'	33.84'	S.27°49'50"W.
28	330.00'	25°21'46"	146.08'	74.26'	144.89'	S.12°12'37"W.
29	300.00'	33°24'54"	185.43'	92.97'	185.43'	N.17°14'11"E.
30	300.00'	16°55'43"	88.32'	44.64'	88.32'	N.43°24'29"E.
31	300.00'	52°20'37"	119.75'	172.01'	308.74'	S.25°42'02"W.
32	30.00'	81°28'30"	47.90'	23.97'	47.90'	N.45°15'59"E.
33	1630.00'	03°41'19"	104.94'	52.49'	104.92'	N.35°54'06"W.
34	1570.00'	03°41'19"	101.08'	50.56'	101.06'	N.35°54'06"W.

- SYMBOL LEGEND
- CONCRETE MONUMENT FOUND
 - 4" x 4" CONCRETE MONUMENT SET, LS 4708
 - IRON PIN OR PIPE FOUND
 - 5/8" IRON ROD SET, LS 4708
 - WIRE FENCE
 - ELECTRIC UTILITY LINE (OVERHEAD)
 - UNDERGROUND ELECTRIC SERVICE
 - CABLE TV LINE (OVERHEAD)
 - CHAIN LINK FENCE
 - WOODEN FENCE
 - CMP CORRUGATED METAL PIPE
 - RCF REINFORCED CONCRETE PIPE
 - LS LAND SURVEYOR
 - LB LICENSED BUSINESS
 - ORB OFFICIAL RECORD BOOK
 - PRM PERMANENT REFERENCE MONUMENT
 - PCP PERMANENT CONTROL POINT
 - UTILITY POLE
 - RIGHT-OF-WAY
 - NO IDENTIFICATION
 - FLA. D.O.T. FLA. DEPT. OF TRANSPORTATION
 - E CENTERLINE
 - 4" x 4" CONCRETE MONUMENT, PRM, LS 4708
 - CONCRETE MONUMENT
 - AC. ACRES
 - ELEVATION NATIONAL GEODETIC VERTICAL DATUM OF 1929
 - NOVD 29 NAIL AND DISC, PCP, LS 4708.
 - PG. PAGE

THIS PLAT PREPARED BY
MARK D. DUREN, P.S.M.
LS 4708

1604 SW SISTERS WELCOME ROAD
LAKE CITY, FLA. 32025
(386) 758-9831 OFFICE
(386) 758-8010 FAX

WO# 02-018FP3
SHEET 3 OF 7

CERTIFIED A TRUE, COMPLETE AND CORRECT COPY
BY **AL EFRAN** DEPUTY CLERK
CLERK OF BAKER COUNTY

