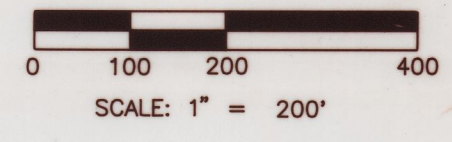
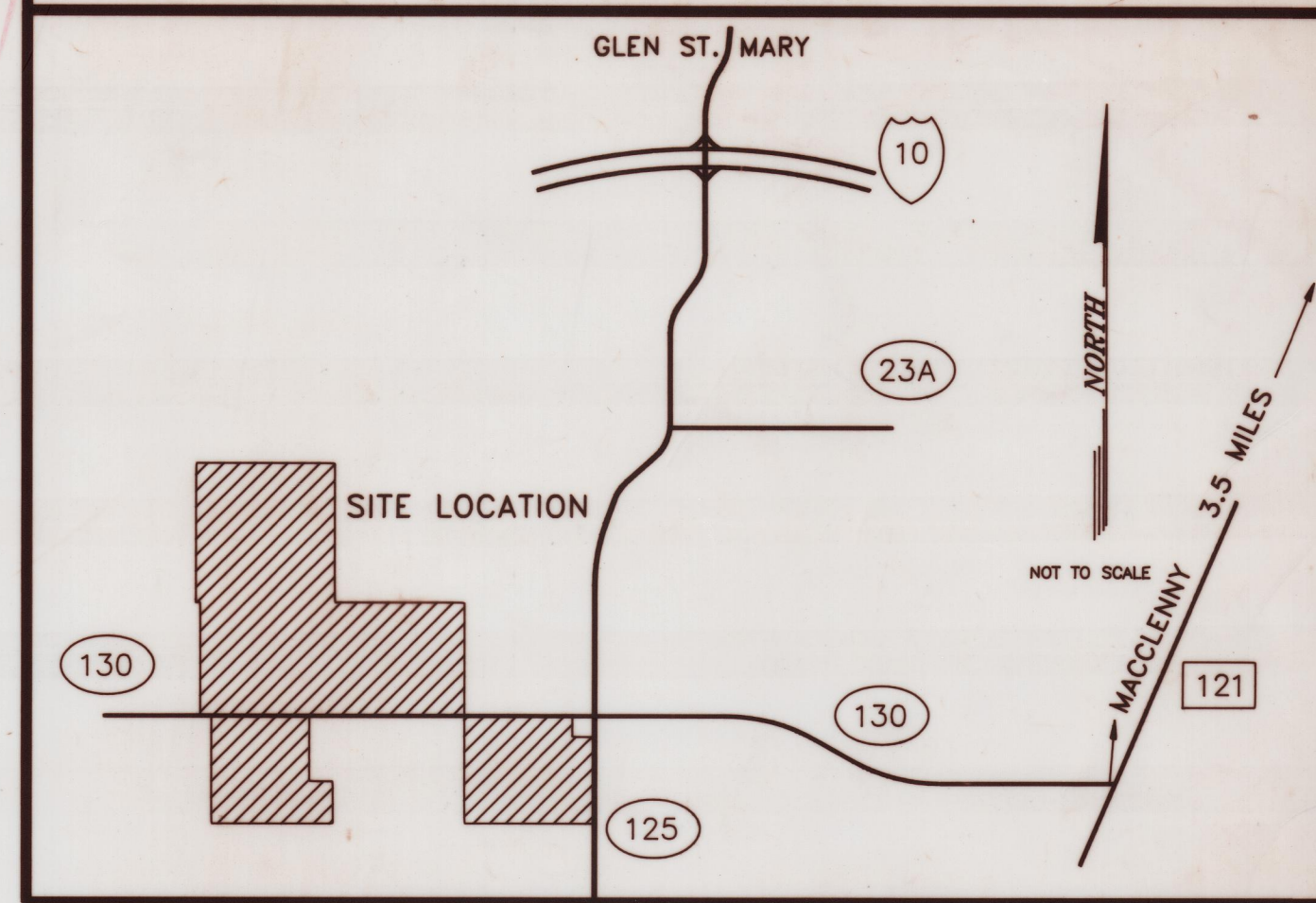


# SmokeRise

PART OF SECTION 23,  
TOWNSHIP 3 SOUTH, RANGE  
21 EAST, BAKER COUNTY, FL.

(SEE SHEET 2 FOR DESCRIPTION)

N.W. 1/4 OF NE. 1/4

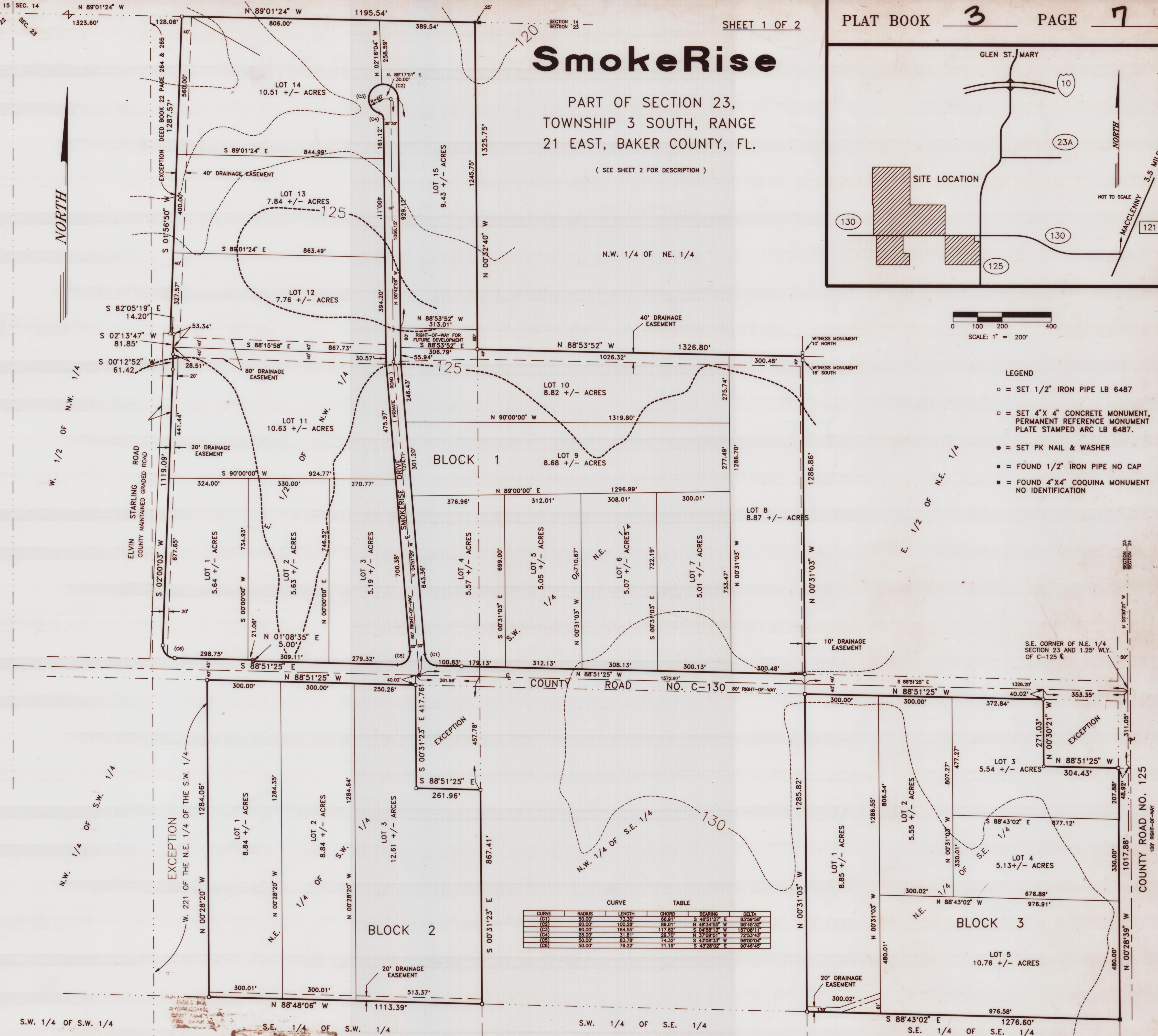


- LEGEND
- = SET 1/2" IRON PIPE LB 6487
  - = SET 4" X 4" CONCRETE MONUMENT, PERMANENT REFERENCE MONUMENT PLATE STAMPED ARC LB 6487.
  - = SET PK NAIL & WASHER
  - = FOUND 1/2" IRON PIPE NO CAP
  - = FOUND 4" X 4" COQUINA MONUMENT NO IDENTIFICATION

NORTH

W. 1/2 OF N.W. 1/4

E. 1/2 OF N.E. 1/4



CURVE TABLE

CURVE	RADIUS	LENGTH	CHORD	BEARING	DELTA
(C1)	73.30'	68.91'	3.44'	S 88°51'25" E	83°59'58"
(C2)	100.00'	88.01'	4.47'	S 88°51'25" E	83°59'58"
(C3)	150.00'	117.82'	6.04'	S 88°51'25" E	83°59'58"
(C4)	200.00'	147.63'	7.61'	S 88°51'25" E	83°59'58"
(C5)	250.00'	177.44'	9.18'	S 88°51'25" E	83°59'58"
(C6)	300.00'	207.25'	10.75'	S 88°51'25" E	83°59'58"
(C7)	350.00'	237.06'	12.32'	S 88°51'25" E	83°59'58"
(C8)	400.00'	266.87'	13.89'	S 88°51'25" E	83°59'58"
(C9)	450.00'	296.68'	15.46'	S 88°51'25" E	83°59'58"
(C10)	500.00'	326.49'	17.03'	S 88°51'25" E	83°59'58"

S.W. 1/4 OF S.W. 1/4

S.E. 1/4 OF S.W. 1/4

S.W. 1/4 OF S.E. 1/4

ARC SURVEYING & MAPPING, INC.

5202 SAN JUAN AVENUE  
JACKSONVILLE, FLORIDA 32210  
PHONE: (904) 384-8377 FAX: (904) 384-8388

SEE SHEET 2 FOR NOTES