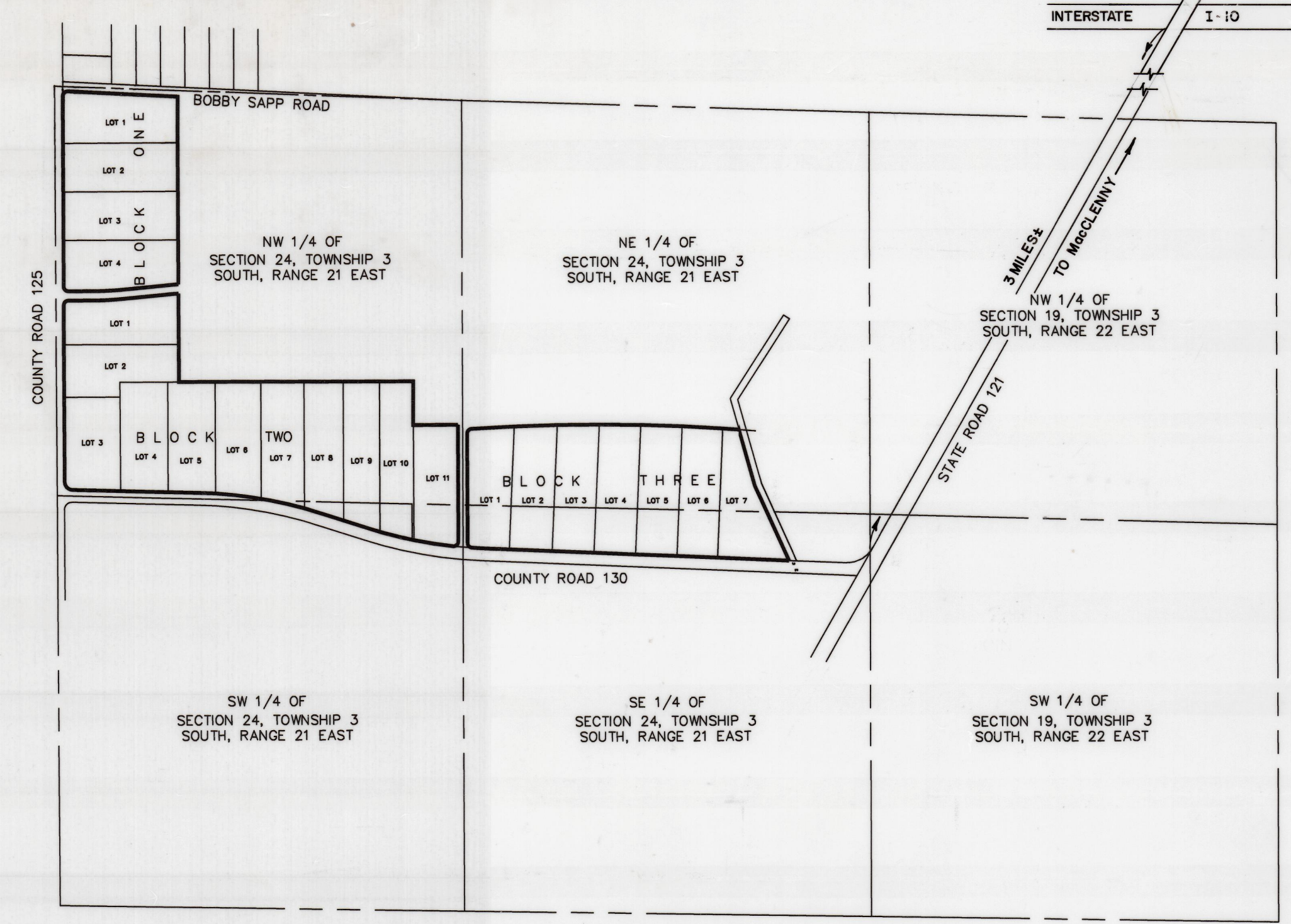


North

SmokeRise II

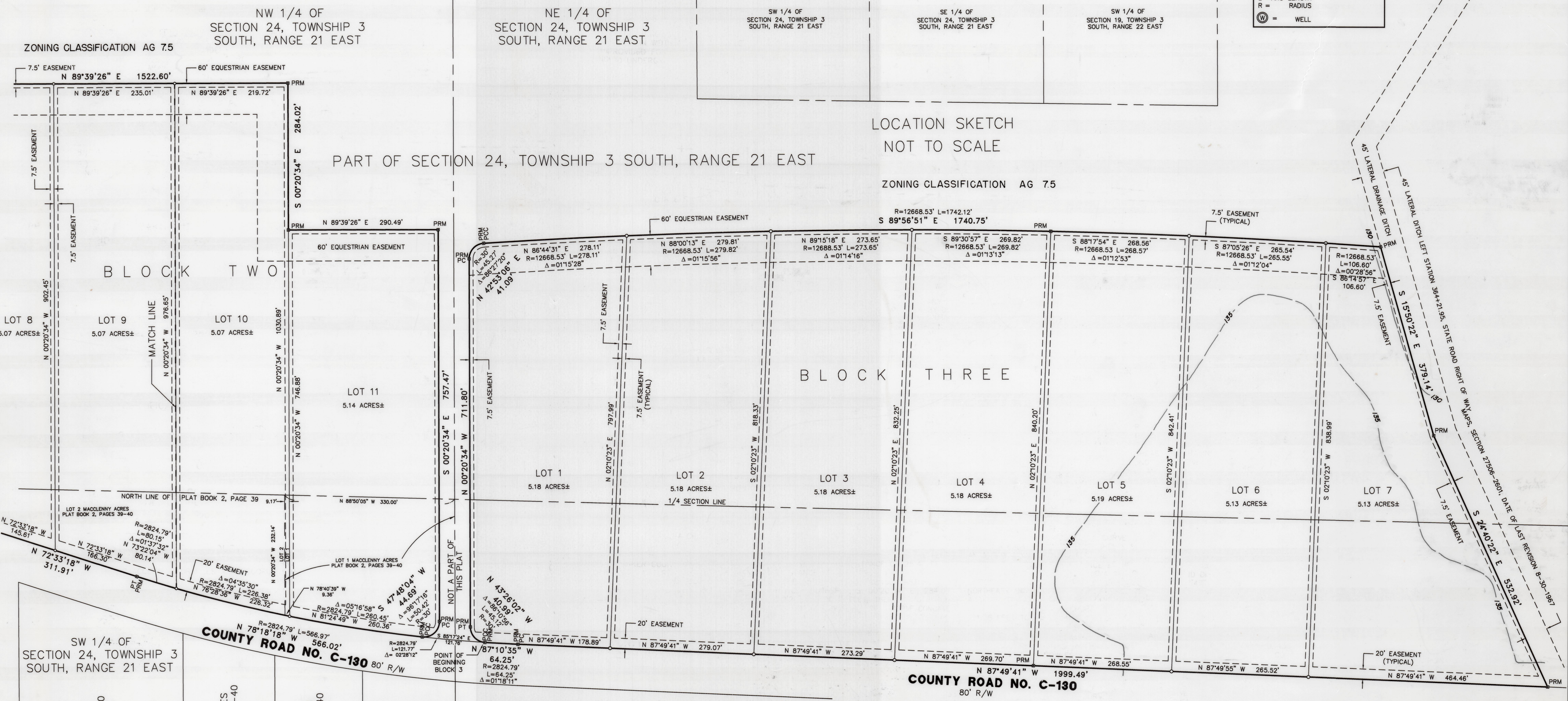
A PORTION OF SECTION 24, TOWNSHIP 3 SOUTH, RANGE 21 EAST AND A REPLAT OF PART OF LOT 1 AND ALL OF LOT 2 ACCORDING TO THE PLAT OF MacCLENNY ACRES AS RECORDED IN PLAT BOOK 2, PAGES 39 AND 40 OF THE PUBLIC RECORDS OF BAKER COUNTY, FLORIDA



LEGEND/ABBREVIATIONS

- ⊠ = 4"x4" x 24" CONCRETE MONUMENT PRM LB 5488
- = SET IRON PIPE OR REBAR MARKED "ASSOC. SURVEY" OR LB 5488
- = FOUND IRON PIN OR PIPE
- = FOUND CONCRETE MONUMENT
- P.R.C. = POINT OF REVERSE CURVE
- P.C.C. = POINT OF COMPOUND CURVE
- B.R.L. = BUILDING RESTRICTION LINE
- (ORB) = OFFICIAL RECORDS BOOK
- OU— = OVERHEAD UTILITIES
- ⊕ = UTILITY POLE
- Δ = CENTRAL ANGLE
- P.C. = POINT OF CURVE
- P.T. = POINT OF TANGENCY
- C/L = CENTERLINE
- I.P. = IRON PIPE OR PIN
- R/W = RIGHT OF WAY
- (R) = RECORD
- (M) = MEASURED
- L = ARC LENGTH
- R = RADIUS
- ⊙ = WELL

CERTIFIED A TRUE, COMPLETE AND CORRECT COPY
 BY **AL Frazer**
 SURVEYOR



NOTE:
 EASEMENTS OF (20') TWENTY FEET IN WIDTH AND (7.5') SEVEN AND ONE HALF FEET IN WIDTH AS SHOWN HEREON ARE HEREBY CREATED AND PROVIDED FOR THE PURPOSE OF ACCOMODATING OVERHEAD, SURFACE, AND UNDERGROUND UTILITIES AND DRAINAGE. WHERE AN AREA GREATER THAN ONE LOT IS USED AS A BUILDING SITE, ONLY THE OUTSIDE BOUNDARY OF SAID SITE SHALL BE SUBJECT TO THE LOT LINE EASEMENT.

PREPARED BY
ASSOCIATED SURVEYORS INC.
 LAND & ENGINEERING SURVEYS
 3846 BLANDING BOULEVARD
 JACKSONVILLE, FLORIDA 32210
 904-771-6468
 CERTIFICATE OF AUTHORIZATION NO. LB 0005488