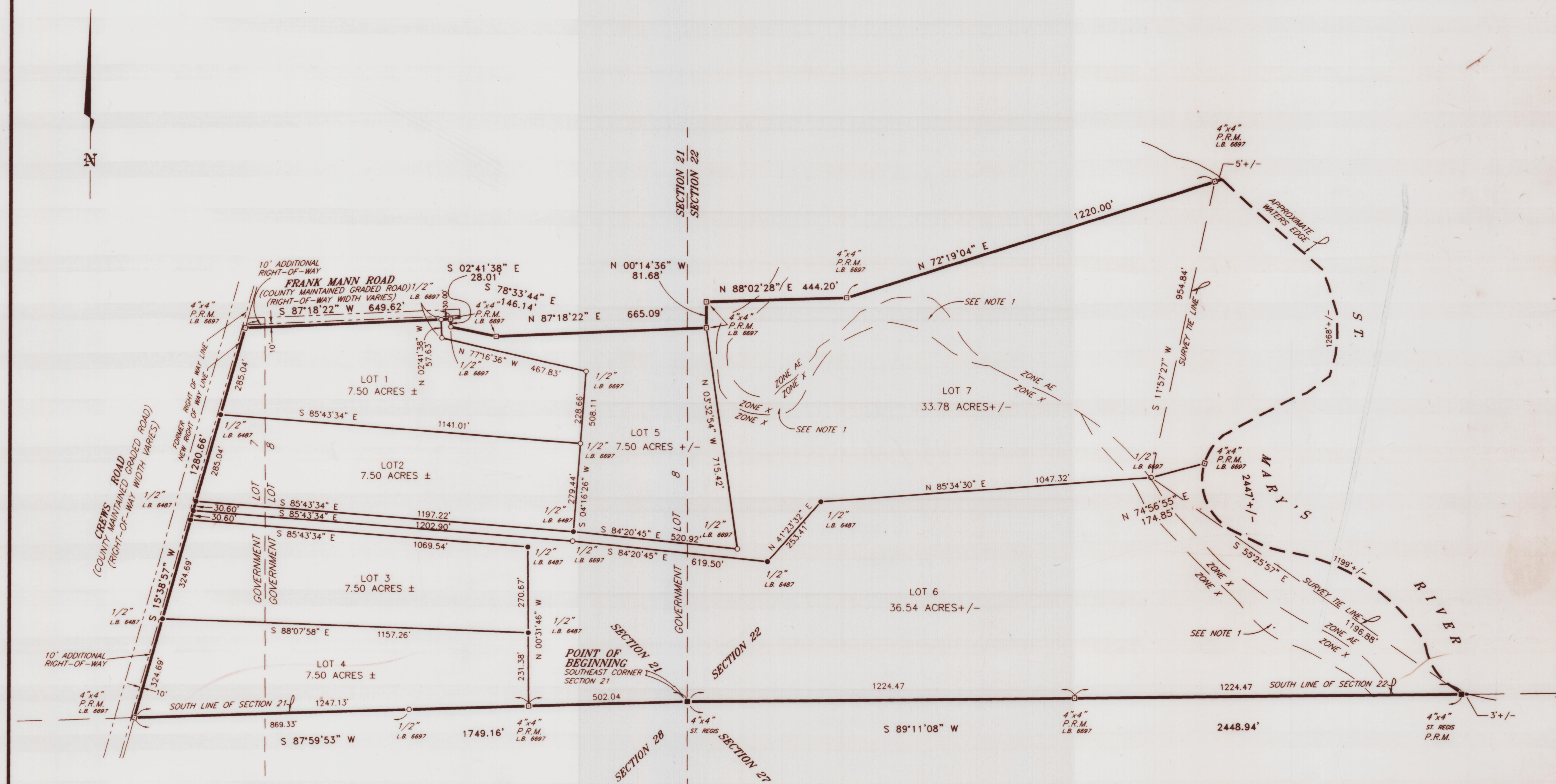
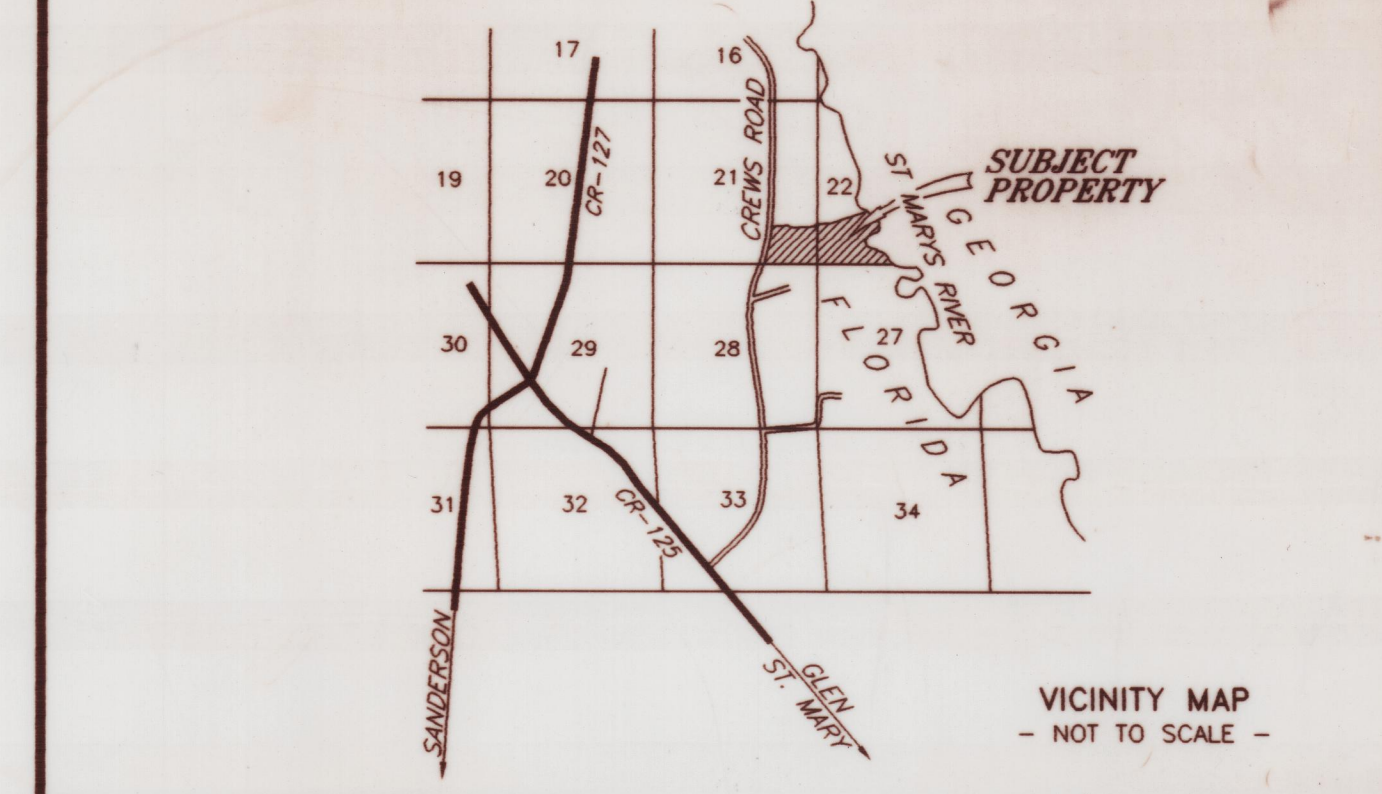


THE GLEN AT ST. MARY'S

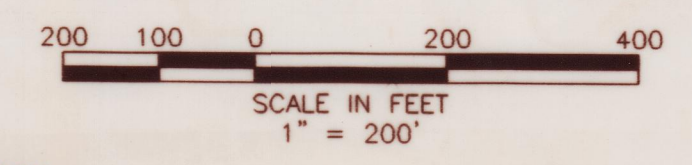
A PORTION OF GOVERNMENT LOTS 7 & 8, SECTION 21 AND
A PORTION OF SECTION 22, TOWNSHIP-1-SOUTH
RANGE-21-EAST, BAKER COUNTY, FLORIDA

SEE SHEET 1 OF 2 FOR COMPLETE DESCRIPTION



NOTES:
 1.) AREAS OF 500-YEAR FLOOD; AREAS OF 100-YEAR FLOOD WITH AVERAGE DEPTHS OF LESS THAN 1 FOOT OR WITH DRAINAGE AREAS LESS THAN 1 SQUARE MILE; AND AREAS PROTECTED BY LEVEES FROM 100-YEAR FLOOD.
 2.) FLOOD ZONE DEMARCATION AND FLOOD INFORMATION SHOWN HEREON WAS SCALED OR TAKEN FROM COMMUNITY PANEL 120419 0135 B, DATED JULY 16, 1991.
 3.) SEE SHEET 1 FOR ADDITIONAL NOTES.

— LEGEND —
 ■ FOUND 4"x4" CONCRETE MONUMENT
 ● FOUND 1/2" IRON PIPE
 ○ SET 1/2" IRON PIPE
 P.R.M. PERMANENT REFERENCE MONUMENT
 □ SET CONCRETE MONUMENT
 □ 4"x4" WITH METAL DISC IN TOP, STAMPED L.B. 6697



L.D. Bradley
 Land Surveyors
 5274 RAMONA BOULEVARD
 JACKSONVILLE, FLORIDA 32205
 PHONE (904) 786-6400 FAX (904) 786-1479