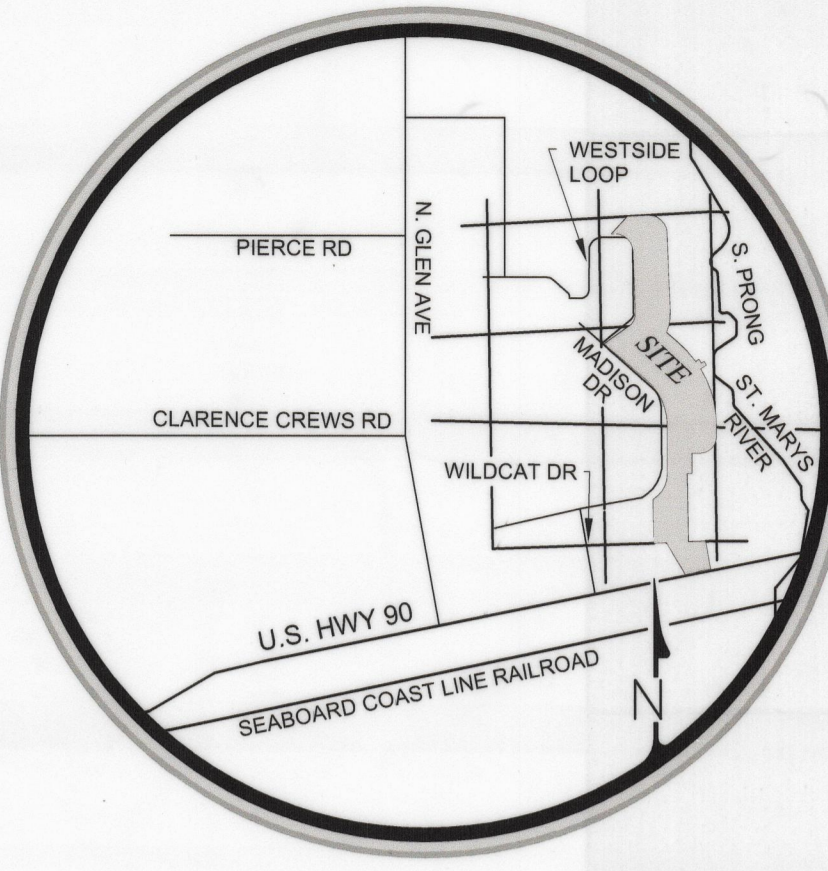


GREYSTONE SUBDIVISION PHASE ONE

PART OF SECTIONS 25 AND 36, TOWNSHIP 2 SOUTH, RANGE 21 EAST AND PART OF SECTIONS 30 AND 31, TOWNSHIP 2 SOUTH, RANGE 22 EAST, BAKER COUNTY, FLORIDA

LEGAL DESCRIPTION

PART OF SECTIONS 25 AND 36, TOWNSHIP 2 SOUTH, RANGE 21 EAST AND PART OF SECTIONS 30 AND 31, TOWNSHIP 2 SOUTH, RANGE 22 EAST, BAKER COUNTY, FLORIDA, MORE PARTICULARLY DESCRIBED AS FOLLOWS: BEGINNING AT THE NORTHEAST CORNER OF THE SOUTHEAST 1/4 OF THE SOUTHEAST 1/4 OF SAID SECTION 25...



NOTE

AN APPLICATION HAS BEEN SUBMITTED TO THE PROPER AUTHORITIES FOR THE MITIGATION OF GOPHER TORTOISES ON THE LANDS SHOWN HEREON.

SOIL TYPES AS PER USDA SOIL SURVEY OF BAKER COUNTY, FL. DATED APRIL 1996

- PELHAM FINE SAND TROUP-BONNEAU DUPLIN LOAMY FINE SAND LEEFIELD FINE SAND BLANTON FINE SAND OSIER FINE SAND PLUMMER FINE SAND

NOTE

THERE ARE NO AREAS OF "HISTORICAL SIGNIFICANCE" IN THIS AREA THAT ARE KNOWN TO THE DEVELOPER OR THAT HAVE BEEN BROUGHT TO THE DEVELOPERS ATTENTION OR OBVIOUS PHYSICAL EVIDENCE OF SUCH WHICH HAS BEEN OBSERVED.

NOTICE

THIS PLAT, AS RECORDED IN ITS GRAPHIC FORM, IS THE OFFICIAL DEPICTION OF THE SURVEYED LANDS DESCRIBED HEREIN AND WILL IN NO CIRCUMSTANCES BE SUPPLANTED IN AUTHORITY BY ANY OTHER GRAPHIC OR DIGITAL FORM OF THE PLAT.

SURVEYOR'S NOTES

- 1. BEARINGS SHOWN HEREON ARE BASED ON THE NORTHEASTERLY RIGHT OF WAY LINE OF MADISON STREET AS SHOWN ON A SURVEY BY L.D. BRADLEY LAND SURVEYORS, INC. NO. 05-092, DATED FEB. 23, 2005 AND REVISED ON JUNE 14, 2005, BEING SOUTH 50° 20' 02" EAST.

GENERAL NOTES

- 1. THIS PROPERTY IS SUBJECT TO THE TERMS AND CONDITIONS OF THE CERTAIN DECLARATION OF COVENANTS, CONDITIONS AND RESTRICTIONS RECORDED IN INSTRUMENT # PUBLIC RECORDS OF BAKER COUNTY, FLORIDA.

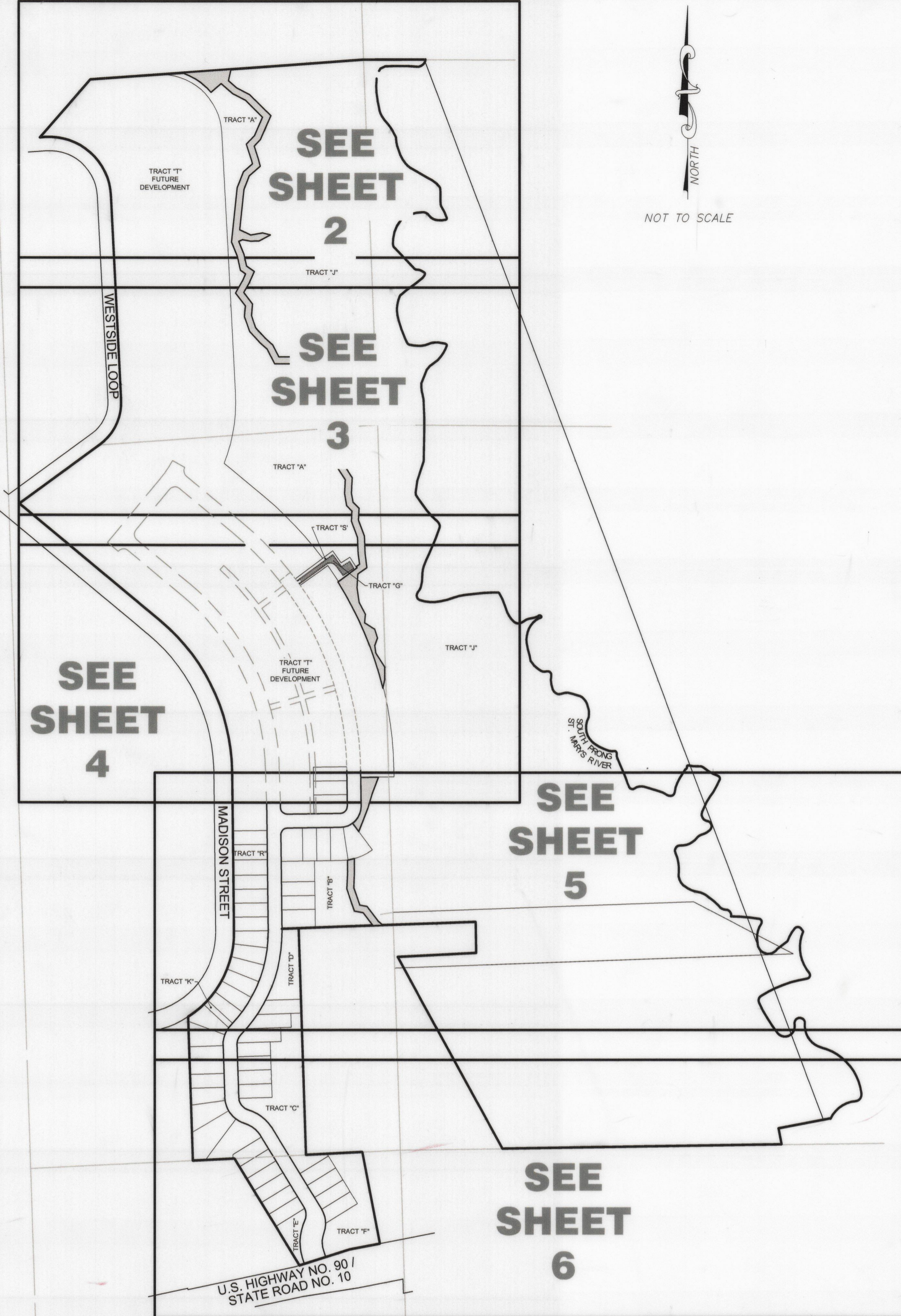


Table with 5 columns: TRACT, AREA ACRES, USE, DEDICATION. Lists details for various tracts including storm water management areas, common areas, wetland conservation, and residential development.

CERTIFICATE OF APPROVAL BY COUNTY ATTORNEY

EXAMINED AND APPROVED BY: [Signature] COUNTY ATTORNEY, DATED 6-7-2007.

CERTIFICATE OF CLERK OF CIRCUIT COURT

I HEREBY CERTIFY THAT I HAVE EXAMINED THE FOREGOING PLAT AND FIND THAT IT COMPLIES IN FORM WITH ALL THE REQUIREMENTS OF CHAPTER 177, FLORIDA STATUTES...

CERTIFICATE OF APPROVAL BY BOARD OF COUNTY COMMISSIONERS

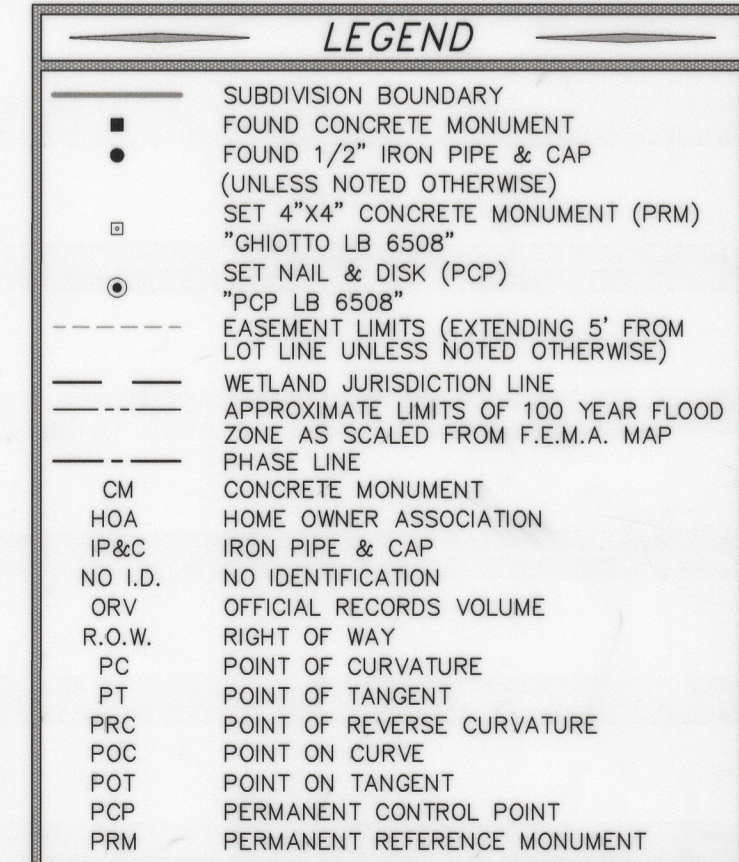
THIS IS TO CERTIFY THAT THE ABOVE PLAT HAS BEEN APPROVED BY THE BOARD OF COUNTY COMMISSIONERS OF BAKER COUNTY, FLORIDA THIS 6th DAY OF June 2007.

CERTIFICATE OF APPROVAL BY COUNTY PLANNING AND ZONING DIRECTOR

THIS IS TO CERTIFY THAT ON June 6, 2007 THE FOREGOING PLAT OR PLAN WAS APPROVED BY THE PLANNING AND ZONING DIRECTOR OF BAKER COUNTY, FLORIDA.

CERTIFICATE OF APPROVAL OF COUNTY ENGINEER

EXAMINED AND APPROVED BY: [Signature] COUNTY ENGINEER, DATED 6/6/07.



ADOPTION & DEDICATION:

KNOW ALL MEN BY THESE PRESENTS THAT FM FLORIDA LAND COMPANY LLC, A DELAWARE LIMITED LIABILITY COMPANY, IS THE LAWFUL OWNER OF THE LANDS SHOWN HEREON AND CONTAINED IN THE CAPTION HEREON KNOWN AS GREYSTONE SUBDIVISION PHASE ONE...

FM FLORIDA LAND COMPANY LLC A DELAWARE LIMITED LIABILITY COMPANY BY: FORTE MACAULAY DEVELOPMENT CONSULTANTS, INC.

BY: Cecile Evans Rider, Vice President, Notary Public, Witness: Stacy Hale.

STATE OF FLORIDA, COUNTY OF DUVAL

THIS IS TO CERTIFY THAT ON June 6, 2007 BEFORE ME, AN OFFICER DULY AUTHORIZED TO TAKE ACKNOWLEDGMENTS IN THE STATE AND COUNTY AFORESAID...

IN WITNESS WHEREOF, I HAVE HEREUNTO SET MY HAND AND SEAL ON THE ABOVE DATE, NOTARY PUBLIC, Stacy Hale, My Commission Expires June 11, 2010.

CERTIFICATE OF REVIEWING SURVEYOR

THIS IS TO CERTIFY THAT ON THIS 6th DAY OF June 2007 A.D., ARNOLD J. JOHNS, FLORIDA PROFESSIONAL SURVEYOR AND MAPPER NO. 4422, HAS REVIEWED THIS PLAT FOR CONFORMANCE WITH FLORIDA STATUTES...

ARNOLD J. JOHNS, PROFESSIONAL SURVEYOR & MAPPER NO. 4422, DATED 6/6/07.

SURVEYOR'S CERTIFICATE

THIS IS TO CERTIFY THAT THE ABOVE PLAT IS A TRUE REPRESENTATION OF THE LANDS SURVEYED, PLATTED, AND DESCRIBED ABOVE, THAT THE SURVEY WAS MADE UNDER MY RESPONSIBLE DIRECTION AND SUPERVISION...

PHILIP M. GHOTTO, PROFESSIONAL SURVEYOR AND MAPPER NO. 4195, GHOTTO & ASSOCIATES, INC., DATED 6/5/07.

NOT VALID WITHOUT THE SIGNATURE AND THE ORIGINAL RAISED SEAL OF A FLORIDA LICENSED SURVEYOR AND MAPPER



CERTIFIED A TRUE, COMPLETE AND CORRECT COPY BY AL FRANK, COUNTY CLERK OF BAKER COUNTY, FLORIDA.