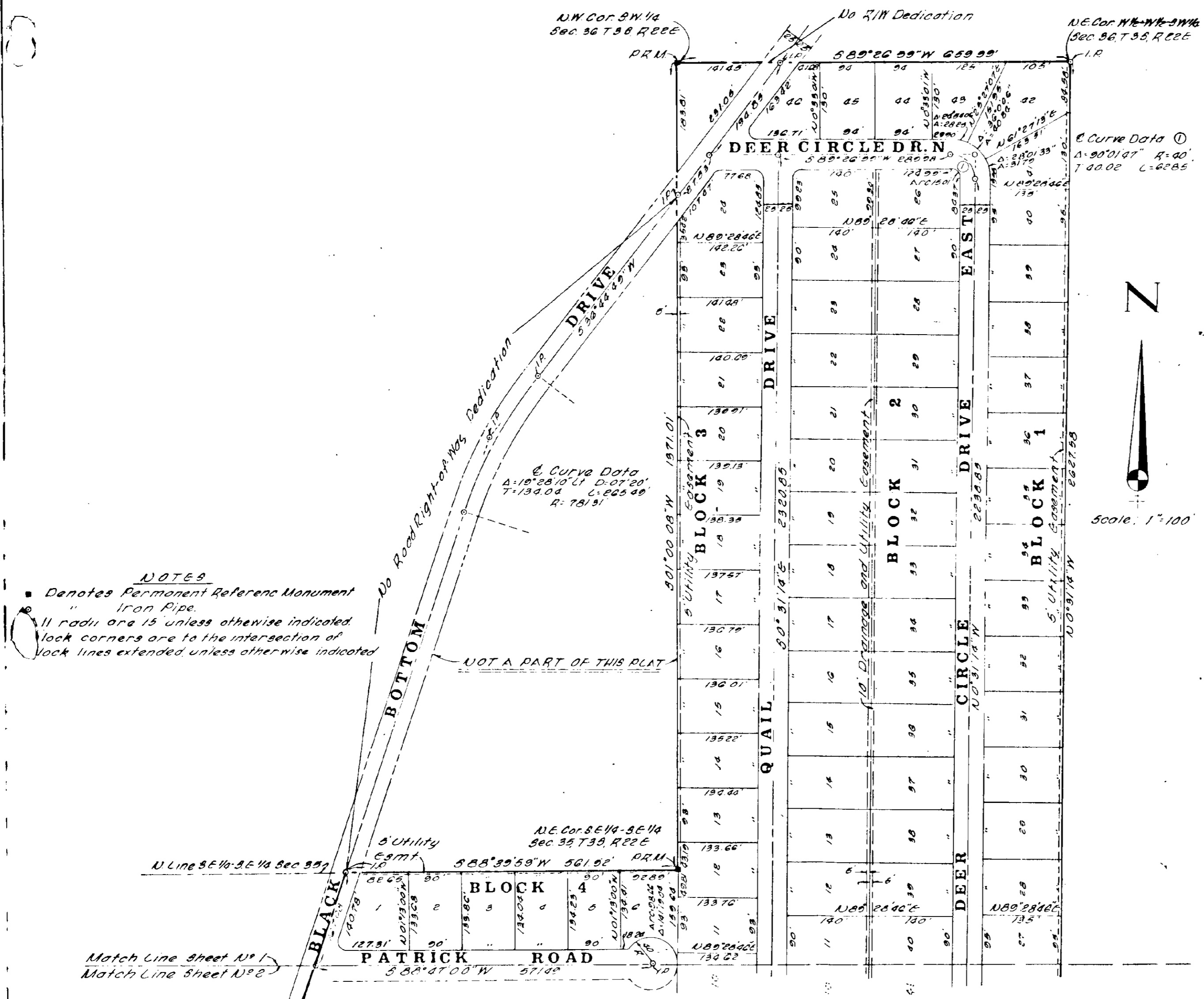


# DEERFIELD

BAKER COUNTY, FLORIDA

**CAPTION:**

A subdivision of the W<sup>1</sup>/<sub>2</sub>-W<sup>1</sup>/<sub>2</sub>-S<sup>1</sup>/<sub>2</sub>-W<sup>1</sup>/<sub>2</sub> of Sec 36 T33 R22E and all that part of S<sup>1</sup>/<sub>2</sub>-E<sup>1</sup>/<sub>2</sub> of Sec 35 T33 R22E lying East of the E. of Black Bottom Drive and being more particularly described as follows:  
 For the Point of Beginning (P.O.B.) of the parcel of land herein described commence at the SW corner of Section 36 Township 3 South Range 22 East of the Tallahassee Meridian, thence run N 85° 05' 00" E along the South line of said Section 36 a distance of 660.01 feet to the SE corner of the W<sup>1</sup>/<sub>2</sub> of the S<sup>1</sup>/<sub>2</sub> of the said Section 36, thence run N 0° 31' 14" W a distance of 662.758 feet to the NE corner of said W<sup>1</sup>/<sub>2</sub>-W<sup>1</sup>/<sub>2</sub> of the said Section 36, thence run S 85° 26' 55" W along the North line of the said Section 36 a distance of 659.99 feet to the NW corner of the said S<sup>1</sup>/<sub>2</sub>-W<sup>1</sup>/<sub>2</sub> of said Section 36, thence run S 01° 00' 08" E along the common line between Sections 35 and 36, a distance of 1371.01 feet to the NE corner of the S<sup>1</sup>/<sub>2</sub>-E<sup>1</sup>/<sub>2</sub> of the S<sup>1</sup>/<sub>2</sub> of said Section 35, thence run S 85° 39' 55" W along the North line of said S<sup>1</sup>/<sub>2</sub>-E<sup>1</sup>/<sub>2</sub> of the S<sup>1</sup>/<sub>2</sub> of Section 35 a distance of 561.52 feet to the centerline (C) of Black Bottom Drive as presently located, thence run S 17° 16' 39" W along said C a distance of 1171.93 feet to the Point of Curvature (P.C.) of a circular curve concave to the SW, having for its principal increments a central angle of 10° 34' 20" and a radius of 572.96 feet, thence run Southwesterly along said curve and said C an arc distance of 105.76 feet to the Point of Termination (P.T.) of said curve, thence run S 87° 50' 59" W along said C a distance of 67.94 feet to point on the South line of said Section 35, thence run N 85° 47' 00" E along said South line of Section 35 a distance of 233.53 feet to the P.O.B.  
 All being and lying in Sections 35 and 36, T33, R22E Baker County, Florida and containing 21.5 acres more or less. Less and excepting the Right-of-Ways for all Roads and Drives shown thereon.



**NOTES**  
 • Denotes Permanent Reference Monument  
 " Iron Pipe  
 " radii are 15' unless otherwise indicated  
 " Vack corners are to the intersection of  
 " Vack lines extended unless otherwise indicated

**ADOPTION AND DEDICATION**  
 THIS IS TO CERTIFY THAT BONAEREA LAND COMPANY INC, a corporation under the laws of the State of Florida is the lawful owner of the lands described in the caption hereon and that it has caused the same to be surveyed and subdivided and this plat, made in accordance with said survey, hereby adopted as the true and correct plat of said lands and all roads, drives, easements and right-of-way for utilities and drainage shown on said plat are hereby irrevocably and without reservations dedicated to Baker County and its successors.  
 In witness whereof BONAEREA LAND COMPANY INC, has caused these presents to be signed by its President and Secretary-Treasurer respectively, by and with authority of its Board of Directors, in its name and with its corporate seal affixed this day of August 1971.

*James B. East*  
 Witness  
*James B. East*  
 Witness  
*James B. East*  
 President  
*James B. East*  
 Secretary-Treasurer

**STATE OF FLORIDA**  
**COUNTY OF BAKER**  
 I hereby certify that on this day personally appeared before me, an officer duly authorized to administer oaths and take acknowledgments, DELEMORE MOORE and JAMES B. EAST, the President and Secretary-Treasurer of BONAEREA LAND COMPANY INC, a corporation under the laws of the State of Florida, to me well known to be the persons described in said plat who executed the foregoing dedication and who severally acknowledged before me, that they executed the same freely and voluntarily as such officers for the use and purposes therein expressed and that they affixed hereto the official seal of said corporation.  
 Witness my signature and official seal of the County of Baker and State of Florida this 22 day of August, A.D. 1971.  
 Notary Public State of Florida  
 My commission expires June 30, 1974

**CLERK'S CERTIFICATE**  
 I hereby certify this plat has been examined and that it complies in form with Chapter 10, 10275, Laws of Florida of 1925 and is filed for record and recorded in Plat Book 2 Page 37 of the Public Records of Baker County Florida this 22 day of August, A.D. 1971.  
*James B. East*  
 Clerk of Circuit Court

**COUNTY COMMISSIONERS CERTIFICATE**  
 Examined and approved this 22 day of August, A.D. 1971 by the Board of County Commissioners of Baker County, Florida.  
*James B. East*  
 By, Chairman

**BAKER COUNTY ZONING BOARD APPROVAL**  
 Approved by the Baker County Zoning Board this day of August, A.D. 1971.  
 Chairman

**SURVEYORS CERTIFICATE**  
 This is to certify that the above plat is a true and correct representation of the lands surveyed, platted and described in the caption above to the best of my knowledge and belief and that Permanent Reference Monuments (PRM) have been placed according to the Laws of the State of Florida.  
 Signed this 12 day of August, A.D. 1971  
 THOMAS R. CAHILL  
 REG. SURVEYOR, JAX., FLA.  
*Thomas R. Cahill*  
 Fla. Certificate 1291750