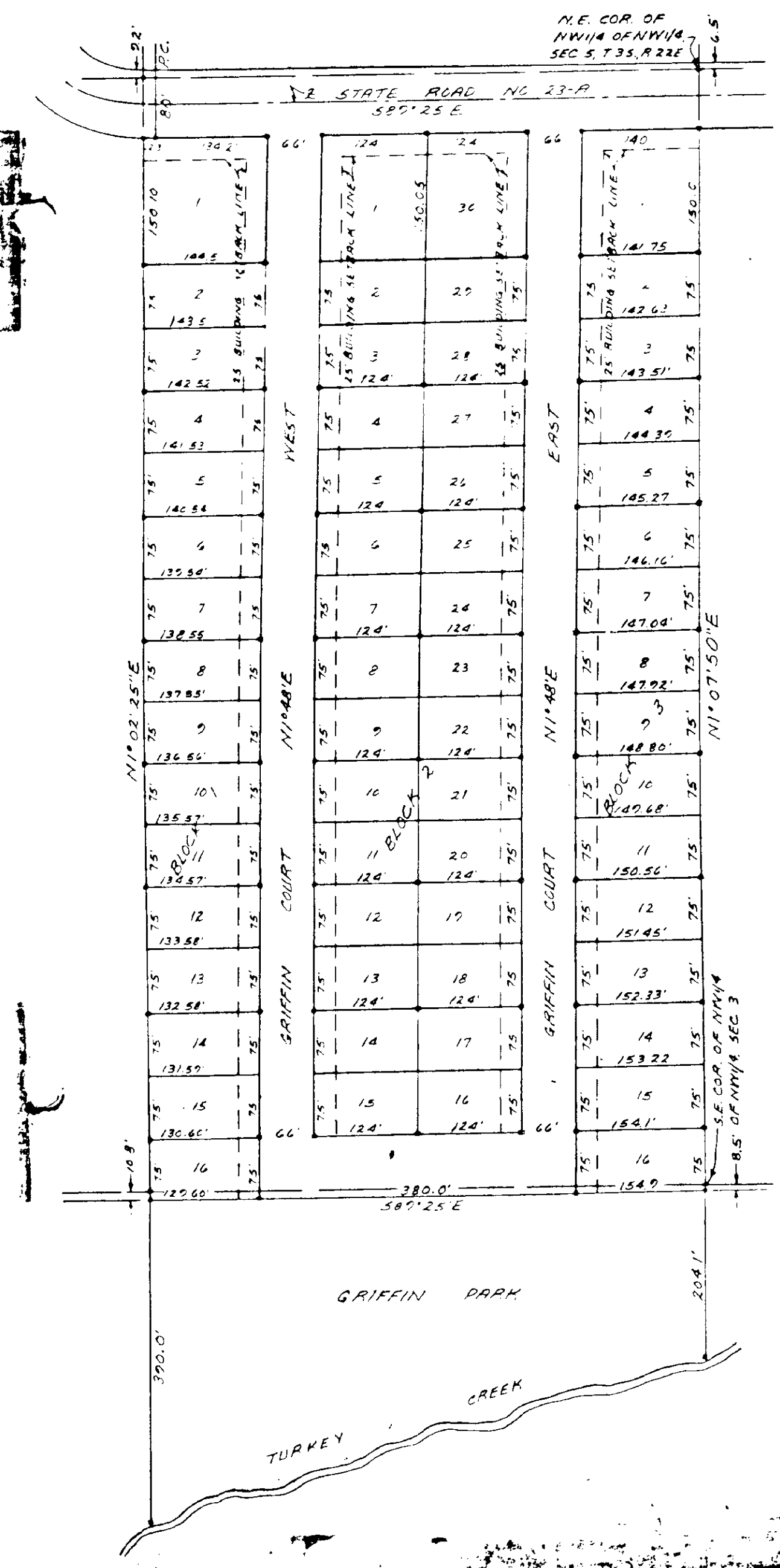


SOUTHSIDE ESTATES REPLAT

A SUBDIVISION OF A PART OF THE E1/2 OF NW1/4 OF NW1/4, AND A PART OF THE E1/2 OF SW1/4 OF NW1/4, SECTION 5, TOWNSHIP 3 SOUTH, RANGE 22 EAST, BAKER COUNTY, FLA.



DESCRIPTION:

THE EAST HALF OF THE NW1/4 OF THE NW1/4, ALSO, THE EAST HALF OF THE SW1/4 OF THE NW1/4, AS LIES NORTH OF TURKEY CREEK ALL IN SECTION 5, TOWNSHIP 3 SOUTH, RANGE 22 EAST, BAKER COUNTY FLORIDA, CONTAINING 24 ACRES MORE OR LESS.

DEDICATION:

KNOW ALL MEN BY THESE PRESENT THAT H.V. GRIFFIN, AND SARA C. GRIFFIN, HIS WIFE, HAVE CAUSED THE LANDS HEREON DESCRIBED TO BE SURVEYED, LAYOUT, SUBDIVIDED, AND PLATTED TO BE KNOWN AS "SOUTHSIDE ESTATES, REPLAT", AND DEDICATE THE STREETS AND PARK AS SHOWN TO THE USE OF THE PUBLIC.

WITNESS [Signature] SIGNED H.V. Griffin
 WITNESS [Signature] SIGNED Sara C. Griffin

ACKNOWLEDGEMENT:

STATE OF FLORIDA:
 COUNTY OF BAKER:
 ON THIS 12 DAY OF August, 1968, PERSONALLY APPEARED BEFORE ME H.V. GRIFFIN, AND SARA C. GRIFFIN, HIS WIFE, TO ME WELL KNOWN AND KNOWN TO ME TO BE THE PERSONS DESCRIBED IN AND WHO EXECUTED THE FOREGOING DEDICATION FOR THE PURPOSES THEREIN EXPRESSED.

WITNESS MY HAND AND OFFICIAL SEAL [Signature] STATE OF FLORIDA
 THIS 12 DAY OF August, 1968.

SIGNED [Signature]
 SECRETARY PUBLIC - MY
 COMMISSION EXPIRES

SURVEYORS CERTIFICATE:

I HEREBY CERTIFY THAT I AM A DULY QUALIFIED LAND SURVEYOR AND THAT THE LAND HEREON DESCRIBED HAS BEEN SURVEYED, LAYOUT, SUBDIVIDED, AND PLATTED AS SHOWN ON THIS PLAT, UNDER MY DIRECTION AND THAT P.M.'S HAVE BEEN SET.

SIGNED [Signature]
 B.G. MOORE, LAND SURVEYOR
 FLA. CERT. NO. 439
 AUGUST 7, 1968

APPROVED BY BOARD OF COUNTY COMMISSIONERS BAKER COUNTY, FLORIDA

SIGNED [Signature] CHAIRMAN
 ATTEST [Signature] CLERK
 DATE August 12, 1968