

PROPERTY  
STATE OF FLORIDA  
OLUSTEE MONUMENT  
FLORIDA DIVISION

PLAT BOOK #1  
PAGE #29

UNITED DAUGHTERS OF THE CONFEDERACY

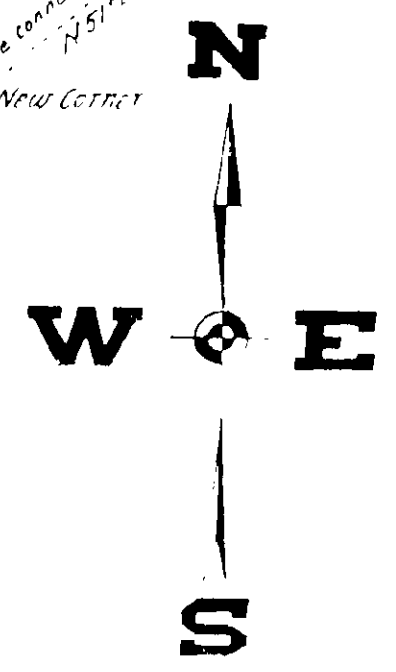
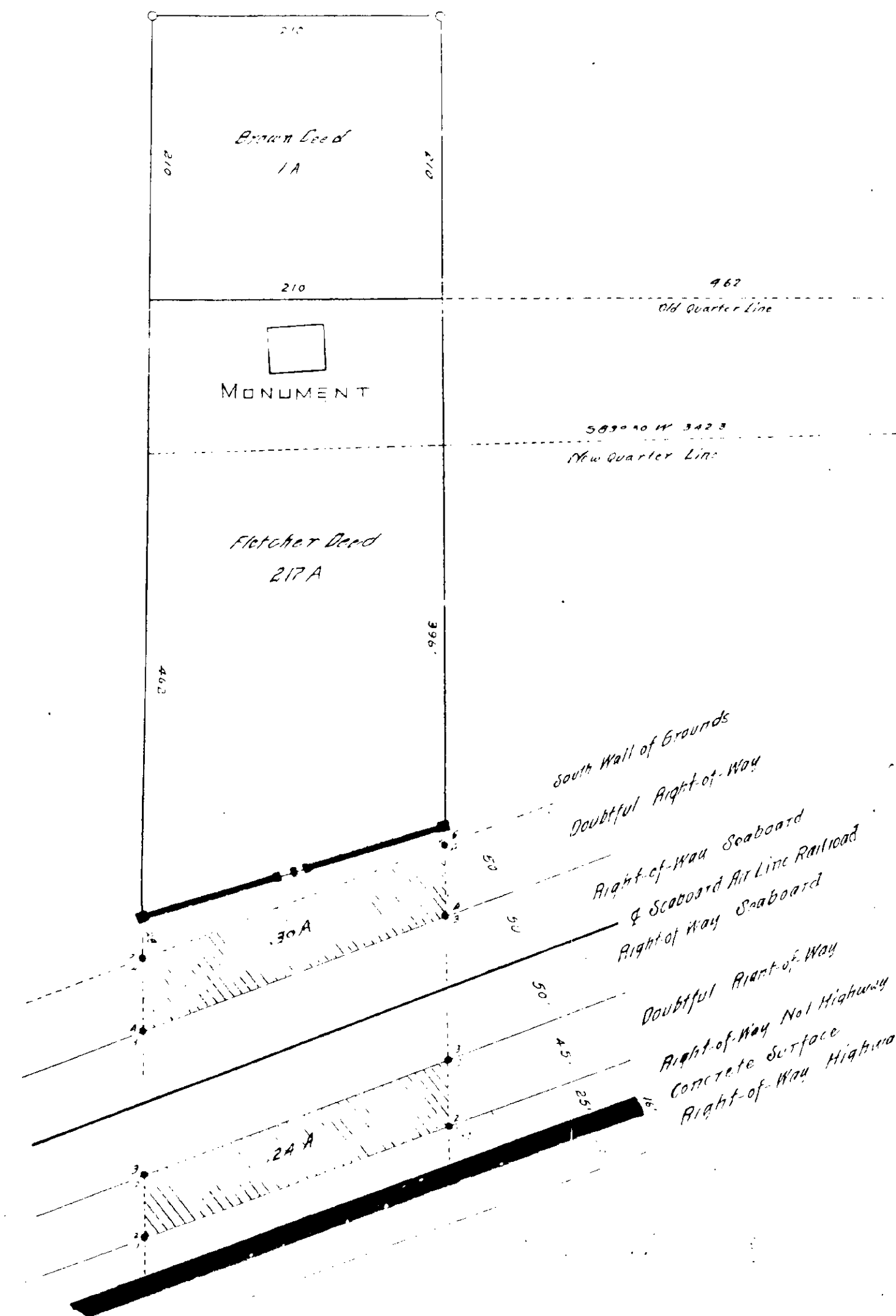
SCALE  
ONE INCH = 50 FEET

We the undersigned Surveyors hereby certify on this 19th day of April, 1926 that we made a survey of the south line 1/4 Sec 23-73 South and Range 19 East and found the same to be well marked by 4" x 4" posts, painted white, as established by the Engineers employed by the R.B. Fletcher Estate. We also found a second corner post for said Quarter corner, from which the location of the original Monument Grounds was evidently made; for the deed to the one-acre tract checks exactly and the deed to the second tract agrees except that the dimensions of the East line fall short of reaching the 100-foot right-of-way by 13 feet and the west line falls short by 28 feet. We further certify that said survey is true and correct as we verily believe.

James V. Sullivan  
Deane Jones

I hereby certify that I have drawn the plat of the Olustee Monument Grounds according to the survey above certified to by the surveyors, and that I have personally checked the measurements of the tracks railroad and highway. The shaded portions of the map should be investigated by an attorney to determine ownership, on account of their value as possible additions to the Memorial Grounds. This certificate is signed at Macclenny Florida, on this 28th day of April, 1926.

John D. Jones  
Civil Engineer



Examined and approved on this 23rd day of April, A.D. 1926 by the Board of County Commissioners for Baker County, State of Florida.  
L. W. Mobley  
Chairman  
Attest: W. C. Thompson  
Clerk

I hereby certify that I have examined this Plat of the State Memorial Grounds at Olustee and that the same is accepted for record and is hereupon recorded in Plat Book No. One on Page \_\_\_\_\_ thereof on this 23rd day of April, A.D. 1926 in the Public Records of Baker County, State of Florida.  
W. C. Thompson  
Clerk