

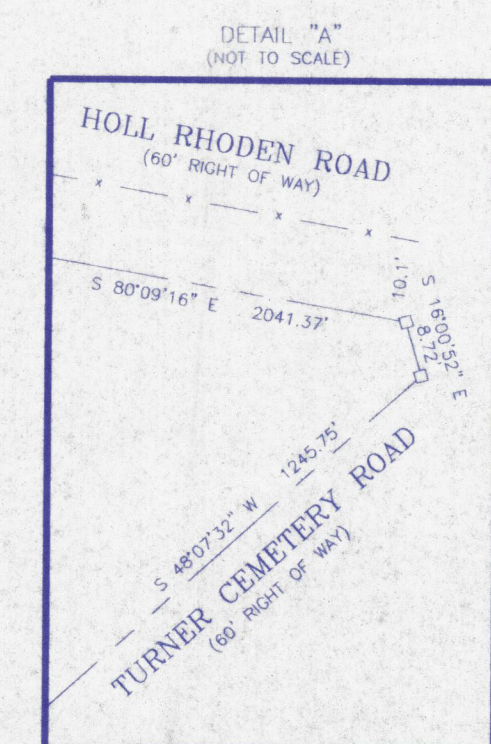
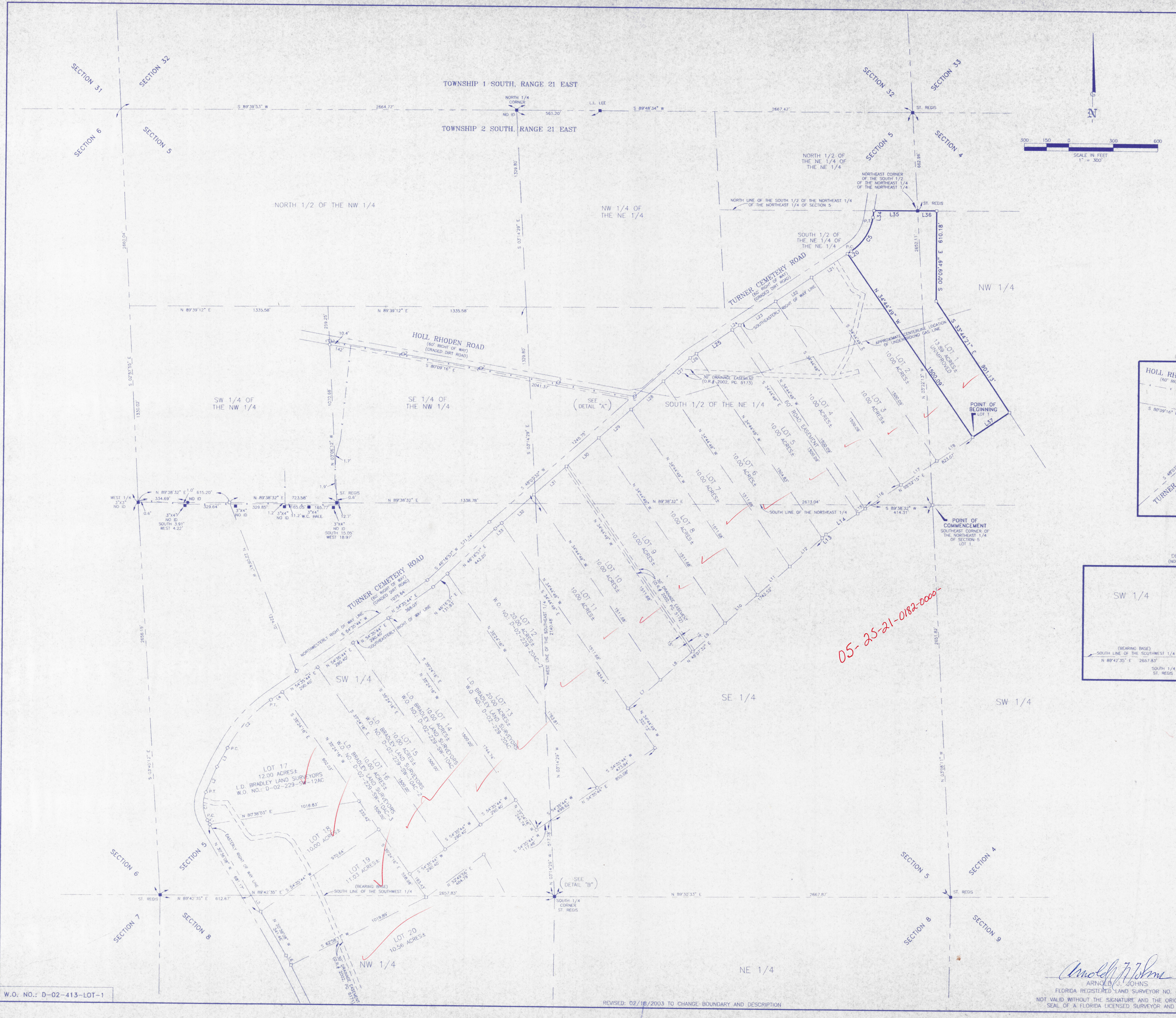
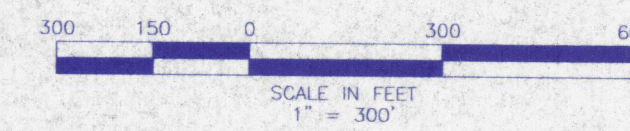
MAP SHOWING BOUNDARY SURVEY OF

LOT 1

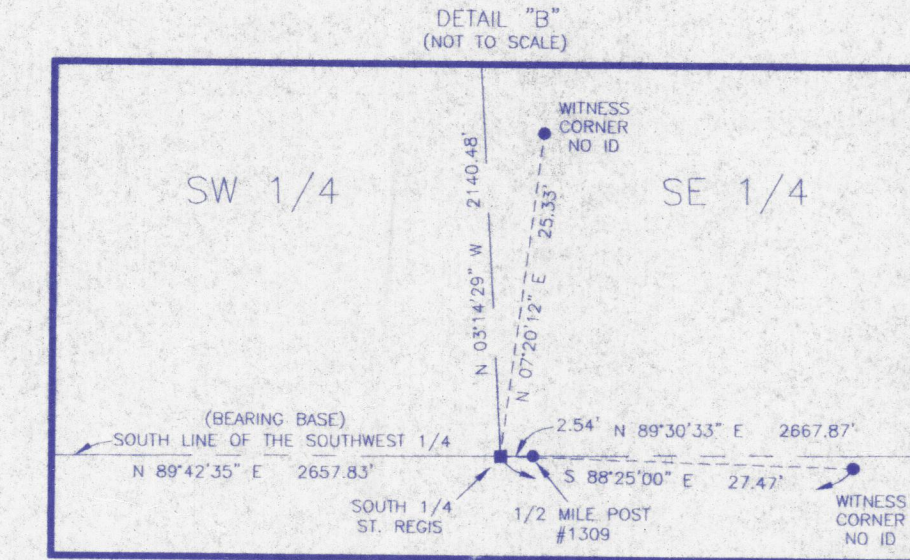
A PART OF THE NORTHEAST 1/4 OF SECTION 5 AND A PART OF THE NORTHWEST 1/4 OF SECTION 4, TOWNSHIP 2 SOUTH, RANGE 21 EAST, BAKER COUNTY, FLORIDA AND BEING MORE PARTICULARLY DESCRIBED AS FOLLOWS:

COMMENCE AT THE SOUTHEAST CORNER OF SAID NORTHEAST 1/4; THENCE SOUTH 89°38'32" WEST, ALONG THE SOUTH LINE OF SAID NORTHEAST 1/4 A DISTANCE OF 414.31 FEET; THENCE NORTH 55°52'15" EAST, 823.07 FEET TO THE POINT OF BEGINNING; THENCE NORTH 34°44'49" WEST, 1500.09 FEET TO A POINT ON THE SOUTHEASTERLY RIGHT OF WAY LINE OF TURNER CEMETERY ROAD (A 60' RIGHT OF WAY AS NOW ESTABLISHED); THENCE NORTH 55°52'15" EAST, ALONG SAID SOUTHEASTERLY RIGHT OF WAY LINE, 30.56 FEET TO THE POINT OF CURVATURE OF A CURVE TO THE LEFT, CONCAVE NORTHWEST, HAVING A RADIUS OF 338.55 FEET; THENCE NORTHEASTERLY ALONG SAID SOUTHEASTERLY RIGHT OF WAY LINE AND THE ARC OF SAID CURVE, 279.27 FEET, THROUGH A CENTRAL ANGLE OF 47°15'52" AND BEING SUBTENDED BY A CHORD BEARING AND DISTANCE OF NORTH 32°14'19" EAST, 271.42 FEET TO THE POINT OF TANGENCY; THENCE NORTH 08°36'23" EAST CONTINUING ALONG SAID SOUTHEASTERLY RIGHT OF WAY LINE, 46.53 FEET TO A POINT ON THE NORTH LINE OF THE SOUTH 1/2 OF THE NORTHEAST 1/4 OF SAID NORTHEAST 1/4 OF SECTION 5; THENCE NORTH 89°46'03" EAST, ALONG SAID NORTH LINE, 293.97 FEET TO THE NORTHEAST CORNER OF SAID SOUTH 1/2; THENCE NORTH 89°50'11" EAST, 128.61 FEET; THENCE SOUTH 00°09'49" EAST, 610.18 FEET; THENCE SOUTH 33°44'21" EAST, 901.13 FEET; THENCE SOUTH 55°52'15" WEST, 298.25 FEET TO THE POINT OF BEGINNING.

CONTAINING 13.89 ACRES, MORE OR LESS.



LINE	BEARING	LENGTH
L1	S 30°36'08" E	32.53'
L2	S 23°09'42" W	187.72'
L3	N 28°28'32" E	146.94'
L4	N 54°35'44" E	93.36'
L5	S 30°36'08" E	128.23'
L6	N 27°27'46" W	70.84'
L7	N 48°07'32" E	290.40'
L8	N 48°07'32" E	290.40'
L9	N 48°07'32" E	290.40'
L10	N 48°07'32" E	290.40'
L11	N 48°07'32" E	290.40'
L12	N 48°07'32" E	290.52'
L13	N 48°07'32" E	35.18'
L14	N 55°52'15" E	255.43'
L15	N 55°52'15" E	60.00'
L16	N 55°52'15" E	290.40'
L17	N 55°52'15" E	290.40'
L18	N 55°52'15" E	290.40'
L19	S 55°52'15" W	254.83'
L20	N 55°52'15" E	30.56'
L21	N 55°52'15" E	290.40'
L22	N 55°52'15" E	290.40'
L23	N 55°52'15" E	290.40'
L24	N 55°52'15" E	60.00'
L25	N 55°52'15" E	290.34'
L26	N 55°52'15" E	50.45'
L27	N 48°07'32" E	239.68'
L28	N 48°07'32" E	290.40'
L29	N 48°07'32" E	290.40'
L30	N 48°07'32" E	290.40'
L31	N 48°07'32" E	290.40'
L32	N 48°07'32" E	290.40'
L33	N 48°07'32" E	56.80'
L34	S 08°36'23" W	46.53'
L35	S 89°46'03" W	293.97'
L36	S 89°50'11" W	128.61'
L37	N 55°52'15" E	298.25'



CURVE	CURVE TABLE					
	DELTA	RADIUS	LENGTH	TANGENT	CHORD BEARING	CHORD DISTANCE
C1	53°45'51"	210.47'	197.60'	106.70'	S 08°43'13" E	190.33'
C2	26°07'12"	966.39'	440.55'	228.17'	S 41°32'08" W	436.25'
C3	47°15'52"	338.55'	279.27'	148.13'	N 32°14'19" E	271.42'

- LEGEND:
- = FOUND IRON PIPE UNLESS OTHERWISE NOTED
 - = SET 1/2" IRON PIPE & CAP STAMPED LB 8888
 - = SET 4"x4" CONCRETE MONUMENT STAMPED LB 8888
 - = FOUND 4"x4" CONCRETE MONUMENT UNLESS OTHERWISE NOTED
 - O.R. = OFFICIAL RECORDS
 - PG. = PAGE
 - ID. = IDENTIFICATION
 - LB. = LICENSED BUSINESS
 - P.C. = POINT OF CURVATURE
 - P.T. = POINT OF TANGENCY

- GENERAL NOTES:
- THIS SURVEY WAS PREPARED WITHOUT THE BENEFIT OF A TITLE ABSTRACT.
 - UNDERGROUND IMPROVEMENTS SUCH AS FOUNDATIONS AND UTILITIES WERE NOT LOCATED.
 - A BEARING OF N 89°42'35" E WAS ASSUMED ON THE SOUTH LINE OF THE SOUTHWEST 1/4 OF SECTION 5 SHOWN HEREON, HOLDING MONUMENTATION SHOWN FOUND IN PLACE.

L.D. BRADLEY
LAND SURVEYORS

**5773 NORMANDY BOULEVARD,
JACKSONVILLE, FLORIDA 32205**
PHONE (904) 786-8400 FAX (904) 786-1479
LICENSED BUSINESS No. 6888

W.O. NO.: 02-413	SURVEY DATE: 11/04/2002	DRAFTED BY: DHB
CHECKED BY: AJJ	CAD FILE: 02413-LOT-1	FB 415 PG ALL

W.O. NO.: D-02-413-LOT-1

REVISED: 02/16/2003 TO CHANGE BOUNDARY AND DESCRIPTION

ARNOLD B. JOHNS
 FLORIDA REGISTERED LAND SURVEYOR NO. 4422
 NOT VALID WITHOUT THE SIGNATURE AND THE ORIGINAL RAISED SEAL OF A FLORIDA LICENSED SURVEYOR AND MAPPER