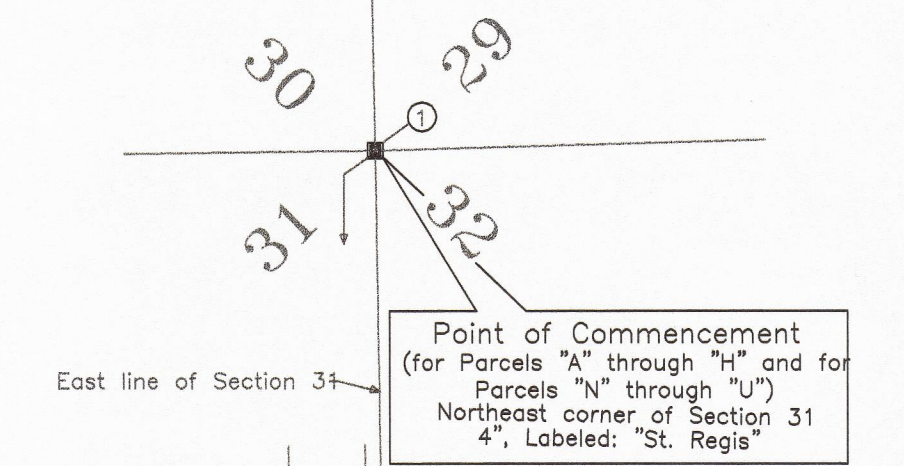


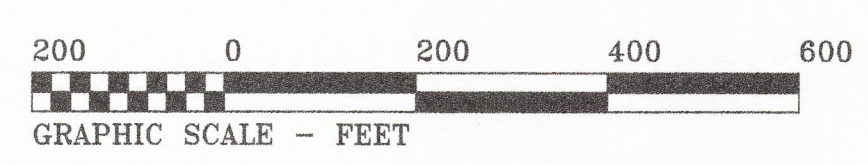
LEGAL DESCRIPTION: (BOUNDARY)

**CAUTION:**  
BURIED UTILITIES MAY EXIST.  
INTERESTED PARTIES ARE ADVISED TO VERIFY.  
BURIED TELEPHONE CABLE IS BELIEVED TO  
BE LOCATED WITHIN OR ADJACENT TO.



**Point to Point  
Bearing & Distance**

2-3	S 87°19'16"W	1345.56'
3-4	S 87°19'16"W	1670.80'
4-5	S 87°19'16"W	2000.83'
5-6	S 87°19'16"W	2332.28'
6-7	S 87°19'16"W	2665.57'
7-8	S 87°19'16"W	3000.52'
8-9	S 87°19'16"W	3337.17'
9-10	S 87°19'16"W	4004.80'
10-11	S 87°19'16"W	5563.28'
11-12	S 01°11'57"E	1324.37'
12-13	S 01°11'57"E	1338.78'
13-14	S 01°11'57"E	1353.04'
14-15	S 01°11'57"E	1360.11'
15-16	S 01°11'57"E	1367.07'
16-17	S 01°11'57"E	1372.07'
17-18	S 88°31'05"W	1267.53'
18-19	S 88°33'00"W	2470.61'
19-20	S 88°33'00"W	2665.12'
20-21	S 88°33'00"W	2834.48'
21-22	S 88°33'00"W	2836.35'
22-23	S 00°47'08"E	1295.51'
23-24	S 01°11'57"E	656.45'
24-25	S 03°59'51"E	30.15'
25-26	S 01°11'57"E	40.00'
26-27	S 01°11'57"E	616.45'
27-28	S 00°47'08"E	20.00'
28-29	S 00°47'08"E	1275.51'
29-30	S 87°21'42"E	663.85'



NOTE: This map consists of multiple sheets and is not complete without all sheets.

**GEOTec Services, Inc.**  
ENGINEERING - PLANNING - SURVEYING & MAPPING  
ENVIRONMENTAL CONSULTING - PHOTOGRAMMETRY  
GEOGRAPHIC INFORMATION SYSTEMS DEVELOPMENT  
QUALITY CONTROL/ASSURANCE - PRECISE GPS  
(phone) 386.496.3107 (fax) 386.496.3132  
30 South Lake Avenue, Post Office Box 238, Lake Butler, Florida 32054

**For: C.U.B. Land Trust**

DATE: 06/10/2003	SHEET 2 of X SHEETS	JOB NUMBER: 03603
SCALE: 1" = 200'		MAP NUMBER: 2560-D